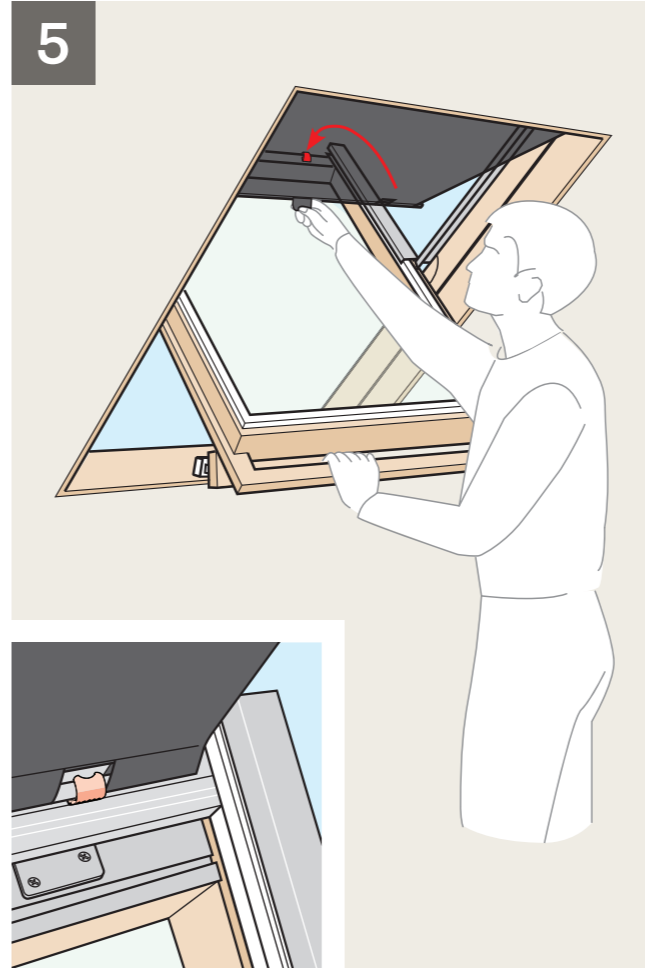
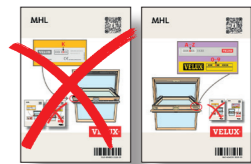
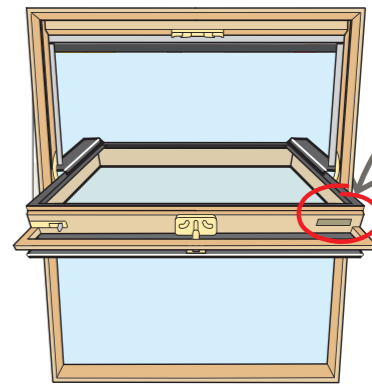
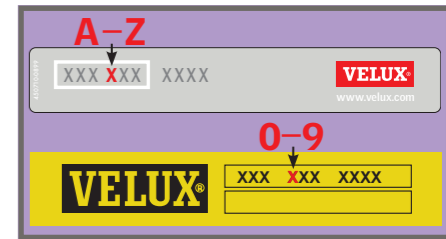


VELUX® 6



VELUX® 7

MHL



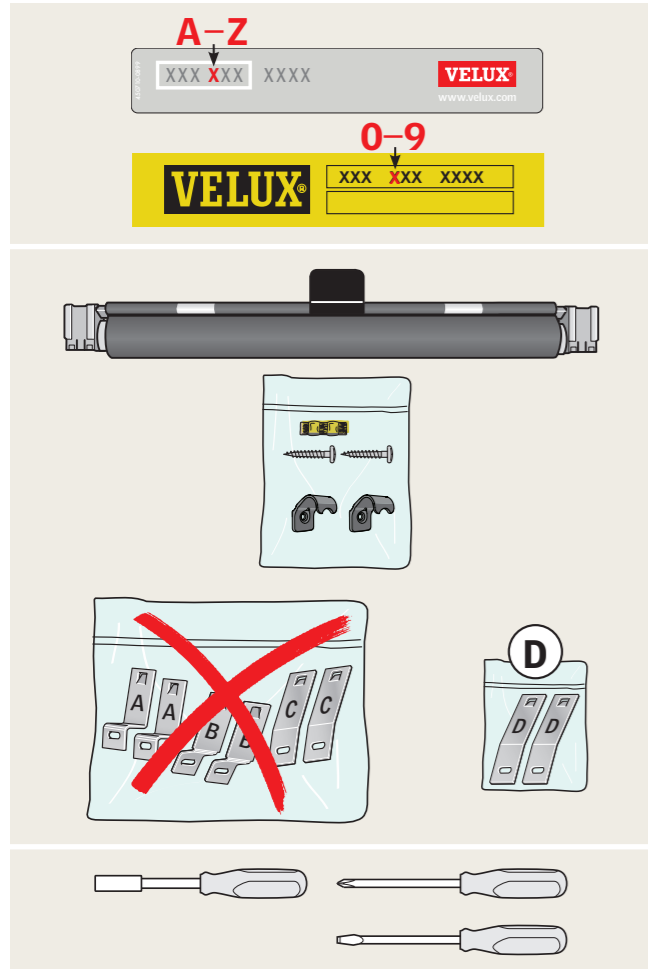
VAS 454903-2026-05

www.velux.com

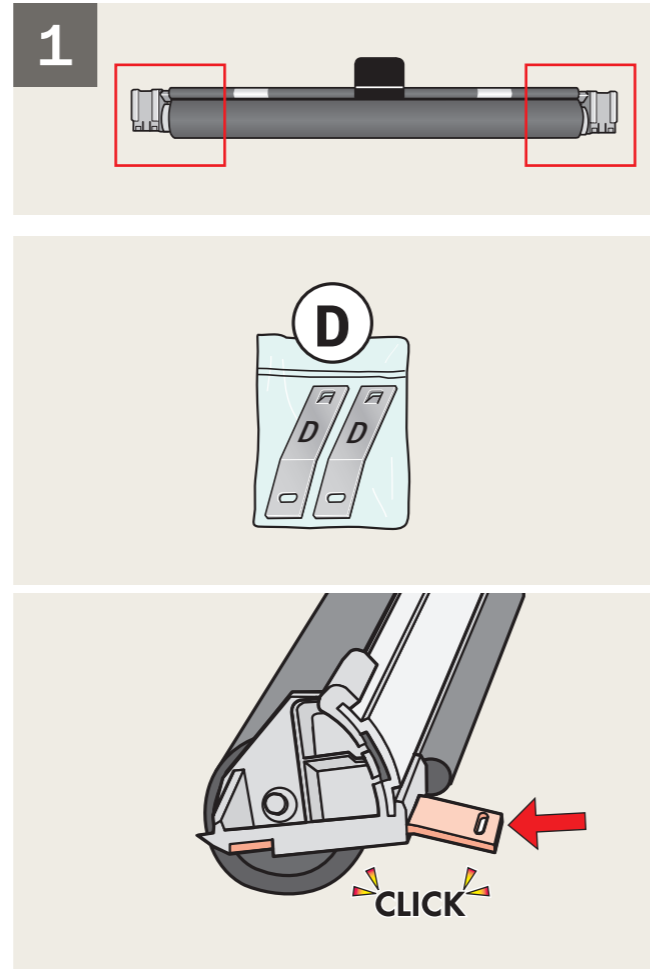


velux.com/contact

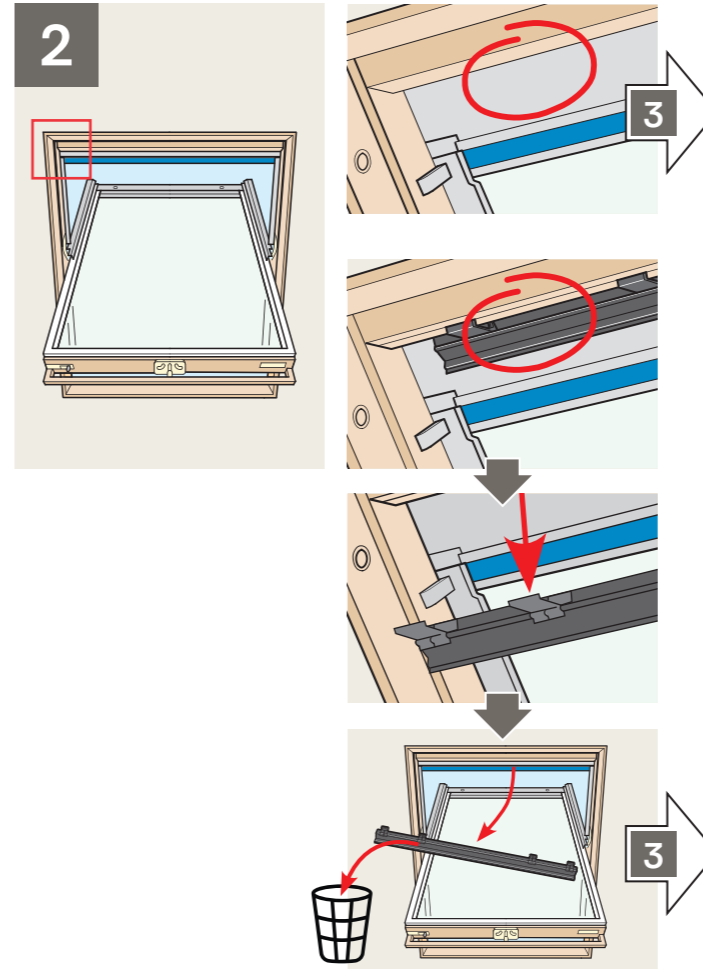
INSTALLATION INSTRUCTIONS FOR MHL ©2011, 2026 VELUX GROUP  
©VELUX AND THE VELUX LOGO ARE REGISTERED TRADEMARKS USED UNDER LICENCE BY THE VELUX GROUP



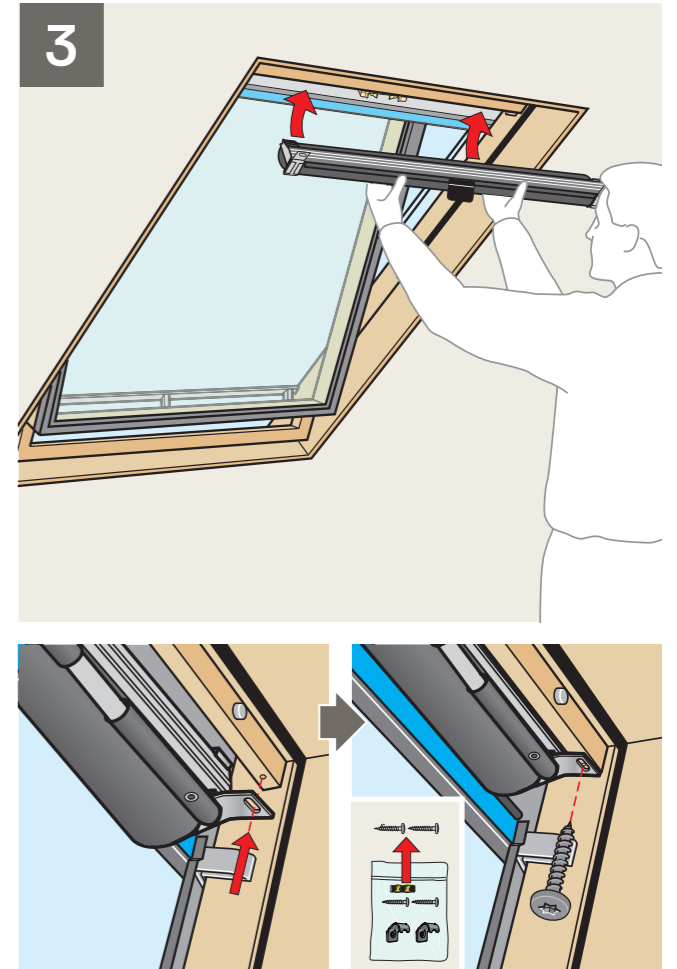
VELUX® 2



VELUX® 3



VELUX® 4



VELUX® 5