

Congratulations on your new VELUX INTEGRA® product!

Thank you for buying this VELUX INTEGRA® product.

The wall switch has been produced and tested in accordance with the newest methods and strictest requirements and will help you to get the most out of all your VELUX INTEGRA® products.



Contents

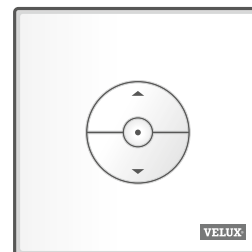
Wall switch types	3
Wall switch functionality	4
Rain sensor	5
Setup of wall switch KLI 311 to operate VELUX INTEGRA® roof windows GGL/GGU or roof windows GGL/GGU with VELUX INTEGRA® window operators	6
Setup of wall switch KLI 311 to operate VELUX INTEGRA® roof window GPU	7
Setup of wall switch KLI 311 to operate VELUX INTEGRA® flat roof window CVP/CVU	8
Setup of wall switch KLI 312 to operate VELUX INTEGRA® solar blinds DSL/RSL/FSL/FSC	9
Setup of wall switch KLI 313 to operate VELUX INTEGRA® solar awning blind MSL	10
Setup of wall switch KLI 313 to operate VELUX INTEGRA® solar roller shutter SSL/SST	11
Setup of wall switch KLI 313 to operate VELUX INTEGRA® solar awning blind MSG	12
Setup of wall switch KLI 311/312/313 to operate electrical products connected to VELUX INTEGRA® power supply unit KUX 110	13
Setup of wall switch KLI 311/312/313 to operate electrical products connected to VELUX INTEGRA® control unit KLC 500	14
Setup of wall switch KLI 311/312/313 to operate electrical products already registered in VELUX INTEGRA® control pad KLR 200	15
Setup of a new wall switch KLI 311/312/313 in addition to an existing wall switch KLI 311/312/313	16
Setup of wall switch for group control of products	17
Manual operation of VELUX INTEGRA® roof windows GGL/GGU	18
Manual operation of VELUX INTEGRA® roof window GPU	19
Closing of VELUX INTEGRA® roof windows GGL/GGU in the case of power failure or discharged battery	20
Closing of VELUX INTEGRA® roof window GPU without wall switch	21
Closing of VELUX INTEGRA® flat roof window CVP/CVU without using the wall switch	22

KLI 310

Wall switch KLI 310 is universal and can operate all io-homecontrol® compatible VELUX INTEGRA® electrically or solar powered products such as roof windows, window operators, interior and exterior sunscreening and roller shutters. Furthermore, KLI 310 can operate other VELUX INTEGRA® accessories such as adapter KRD 100 and frame lights KRA 100.

Wall switch KLI 310 has a neutral design that fits all homes.

You can use wall switch KLI 310 for any of the products mentioned above. More products of the same type can be operated simultaneously with one KLI 310. To pair the KLI 310, follow the instructions for the product you wish to pair it with.



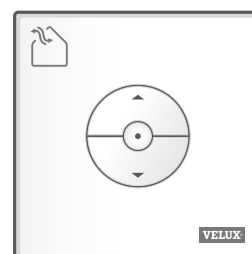
KLI 311



Wall switch KLI 311 is delivered with VELUX INTEGRA® roof windows and VELUX INTEGRA® window operators.

This icon indicates that only VELUX INTEGRA® roof windows and VELUX INTEGRA® window operators can be operated with the wall switch.

Note: Interior and exterior suncreening cannot be operated/paired with this type of wall switch.



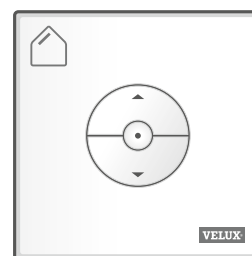
KLI 312



Wall switch KLI 312 is delivered with VELUX INTEGRA® interior suncreening.

This icon indicates that only VELUX INTEGRA® interior suncreening can be operated with the wall switch.

Note: Window operators and exterior suncreening cannot be operated/paired with this type of wall switch.



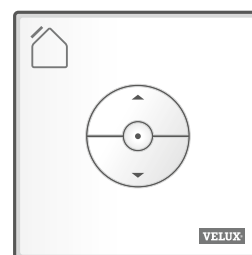
KLI 313



Wall switch KLI 313 is delivered with VELUX INTEGRA® exterior suncreening.

This icon indicates that only VELUX INTEGRA® exterior suncreening can be operated with the wall switch.

Note: Window operators and interior suncreening cannot be operated/paired with this type of wall switch.



Keys for operating the product **a**

☰ OPEN/UP or ☷ CLOSE/DOWN

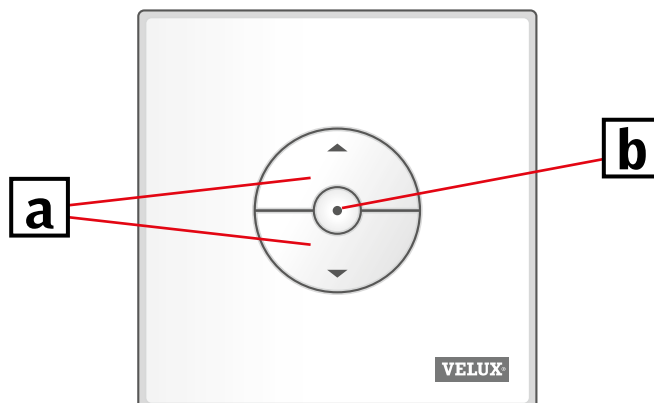
Short key pressure: Product will travel to maximum top or bottom position.

Long key pressure: Product will travel until the key is released.

Note: If several electrical products are connected to a control unit KLC 500, only one of the products (at random) can be operated in this way.

STOP key **b**

● Product stops.



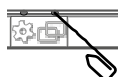
Wall switch KLI has two buttons used for setup:



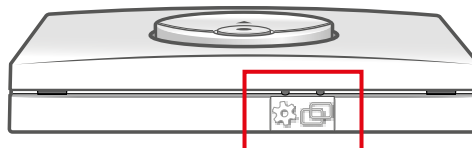
The GEAR button "Open for registration".



The PAIR button "Register".

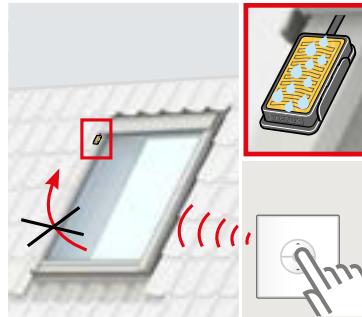


To push the buttons, use a pointed object.

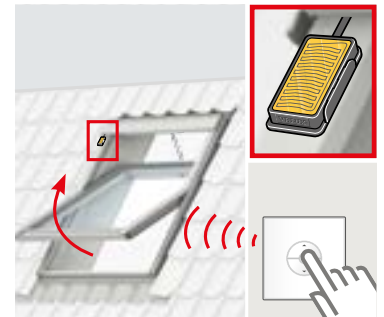




When the rain sensor is activated, the roof window will close automatically within approx. 30 seconds.



The rain sensor prevents the roof window from opening for as long as it detects rain.



The window can be opened again with the wall switch when the rain sensor is dry.

Overruling rain sensor function

The rain sensor function can only be overruled with wall switch KLI 311.

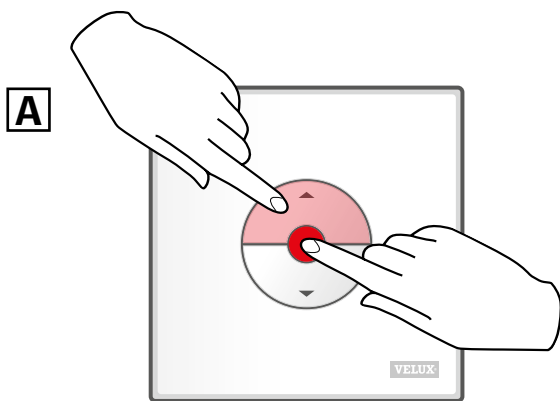
Note: Depending on window type, the rain sensor function can be overruled with a short or a long press, see below.

- VELUX INTEGRA® roof windows and window operators **with** a "K" in the size code on the data plate, eg MK08, see **A**
- VELUX INTEGRA® roof windows and window operators **without** a "K" in the size code on the data plate, eg M08, as well as VELUX INTEGRA® flat-roof windows, see **B**

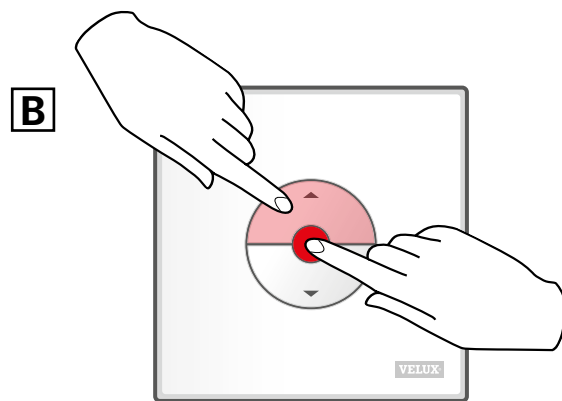
To prevent water damage inside the building, the window normally cannot be opened until the rain sensor is dry again. However, it may, in some cases, take some time for the rain sensor to dry after the rain has stopped. In these cases, the rain sensor function can be overruled at the owner's own risk.

The overruling of the rain sensor will enable the window to open 50% for a period of 15 minutes.

Warning! As the rain sensor function is suspended for 15 minutes, there is a risk of water damage to the building. Therefore, we do not recommend overruling the rain sensor if the window is left unattended.



Press OPEN/UP and STOP key simultaneously for **less** than 1 second.



Press OPEN/UP and STOP key simultaneously for **more** than 1 second.

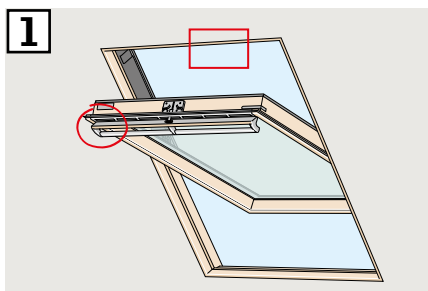
The window can be closed again anytime with a press on the DOWN key.

If a non-functional wall switch must be replaced or if the wall switch cannot find certain products, the products can be prepared for registration by resetting them manually.

Note: Reset products cannot be operated until they have been registered in the wall switch again.

Important: This only applies to KLI 311.

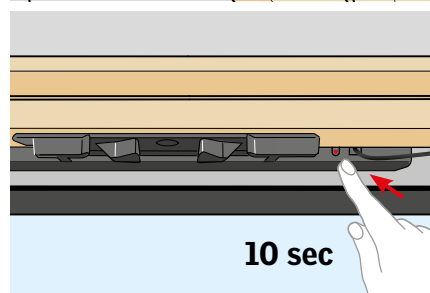
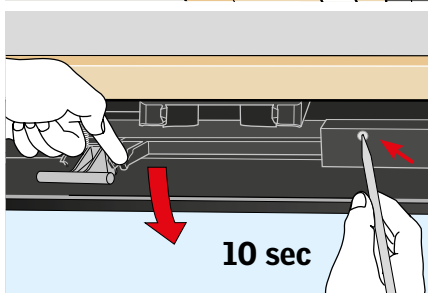
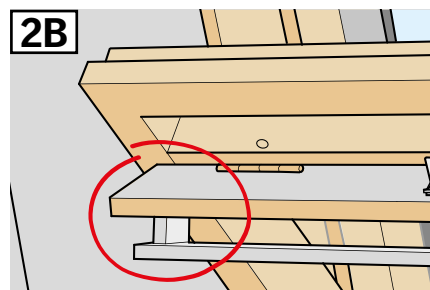
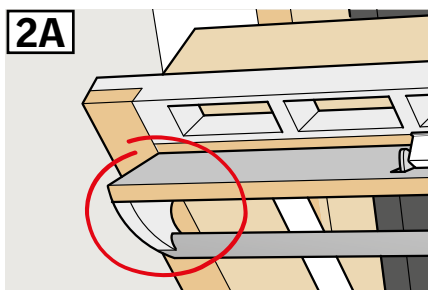
- 1 Ensure the power is turned on. Open window manually (if the window is open, you must close it by pressing the test button on the window operator).



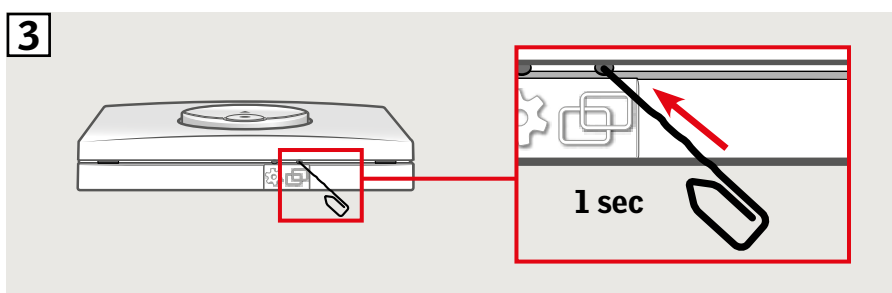
- 2 There are two ways of resetting depending on window type. The ventilation flap can look like 2A or 2B.

Press the test button on the window operator for at least 10 seconds. The window operator will run briefly back and forth.

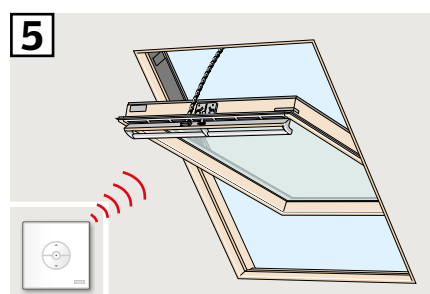
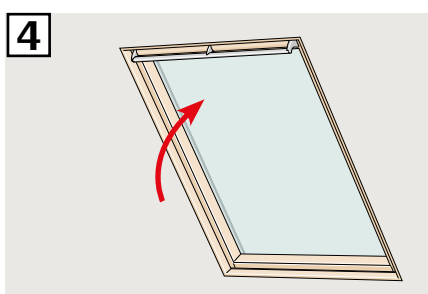
Note: Registration (3) and (4) must now be completed within the next 10 minutes.



- 3 Press PAIR button on the wall switch for 1 second.



- 4 Close the window manually.
5 The window can now be operated with the wall switch.

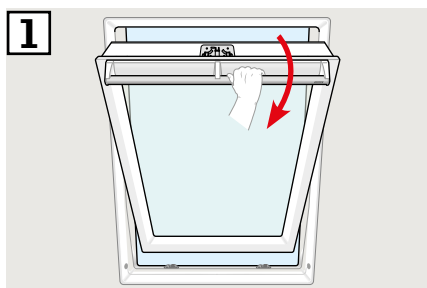


If a non-functional wall switch must be replaced or if the wall switch cannot find certain products, the products can be prepared for registration by resetting them manually.

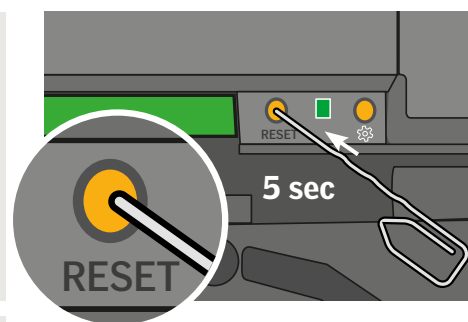
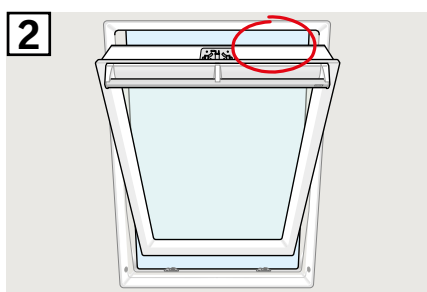
Note: Reset products cannot be operated until they have been registered in the wall switch again.

Important: This only applies to wall switch KLI 311.

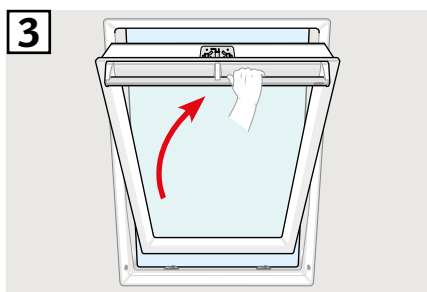
- 1** **Note:** Ensure that the power is turned on and that the window is completely closed, manually and electrically. If the window is not closed electrically, close it by pressing the RESET button on the control box of the window briefly (1 second).
Open the window manually with the control bar.



- 2** Press the RESET button on the control box for at least 5 seconds. The window will "hum" for 20 seconds to indicate that the window is ready for step 3.

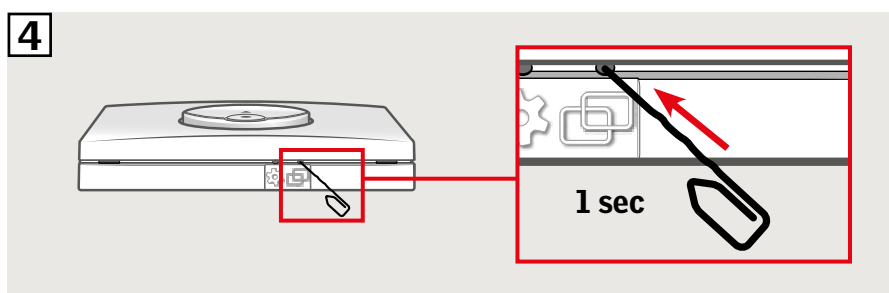


- 3** Close the window with the control bar within 30 seconds. If the 30 seconds are exceeded, go back to step 2. When the window has been closed, the window will again "hum" for 20 seconds to indicate that it has been reset and is ready for registration.

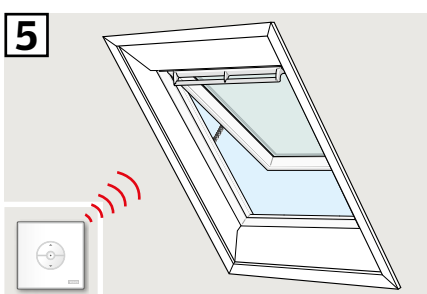


Note: Registration **4** in a new wall switch must now be completed within the next 10 minutes.

- 4** Press the PAIR button on the wall switch for 1 second.



- 5** The window can now be operated with the wall switch.



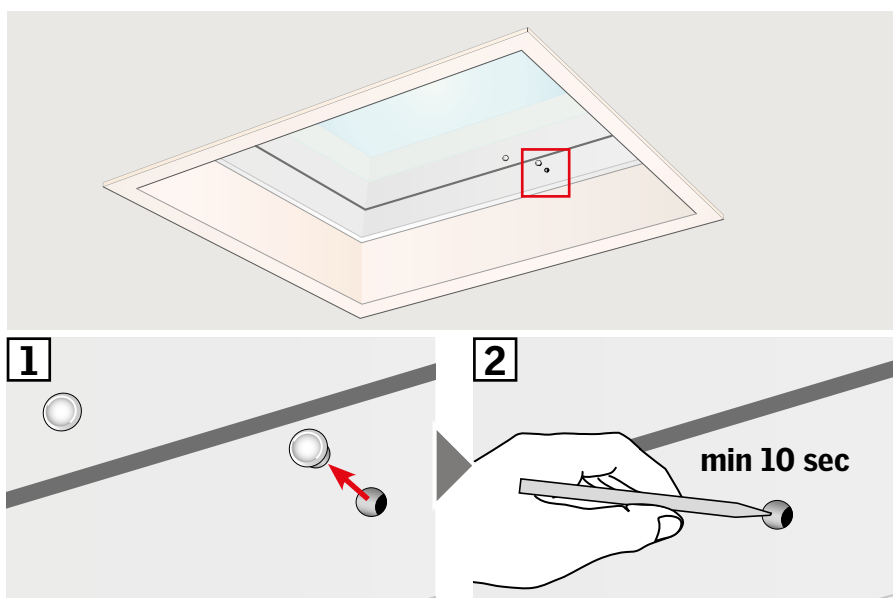
If a non-functional wall switch must be replaced or if the wall switch cannot find certain products, the products can be prepared for registration by resetting them manually.

Note: Reset products cannot be operated until they have been registered in the wall switch again.

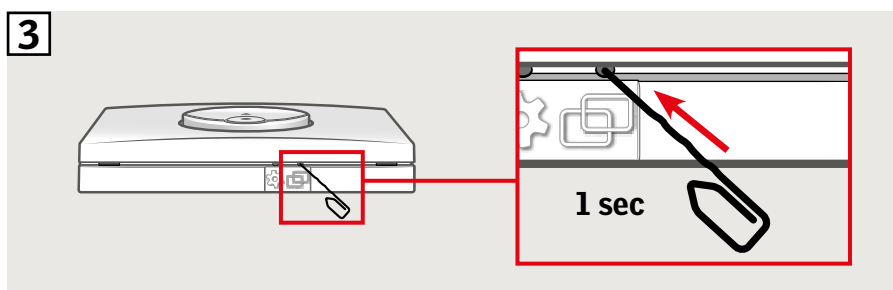
Important: This only applies to KLI 311.

- 1 Carefully remove the cover cap on the kerb.
- 2 Press the test button on the window operator behind the cover cap for at least 10 seconds. The window operator will run briefly back and forth.

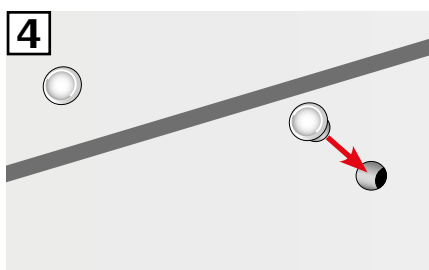
Note: Registration (3 and 4) must now be completed within the next 10 minutes.



- 3 Press PAIR button on the wall switch for 1 second.



- 4 Refit cover cap.



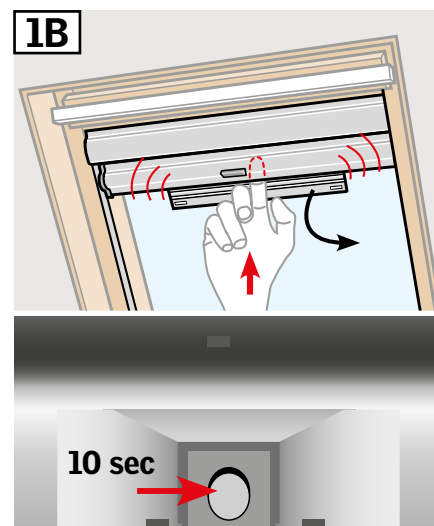
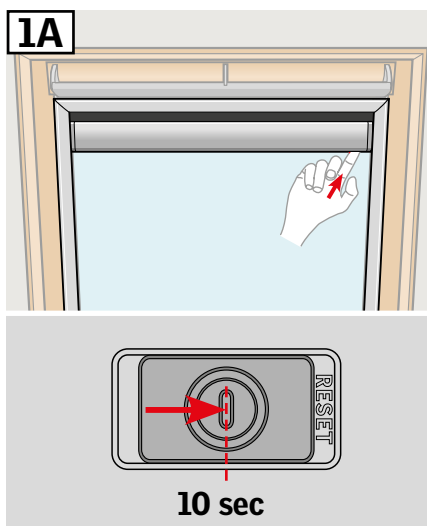
The window can now be operated with the wall switch.

If a non-functional wall switch must be replaced or if the wall switch cannot find certain products, the products can be prepared for registration by resetting them manually.

Note: Reset products cannot be operated until they have been registered in the wall switch again.

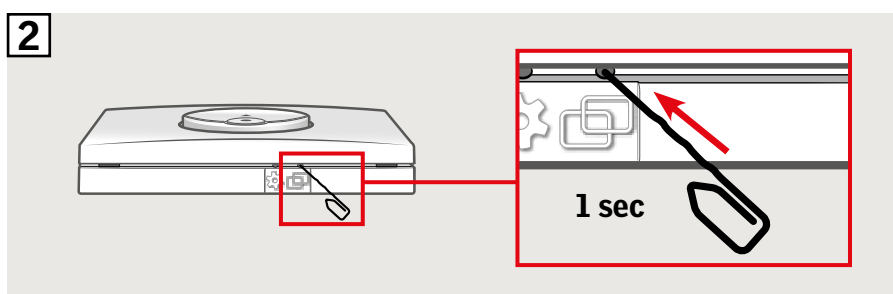
Important: This only applies to KLI 312.

- 1 Depending on the blind type, the RESET button will be located as shown in illustration 1A or 1B. Press the RESET button on the blind for 10 seconds (motor makes a brief buzzing noise, but the product does not move).

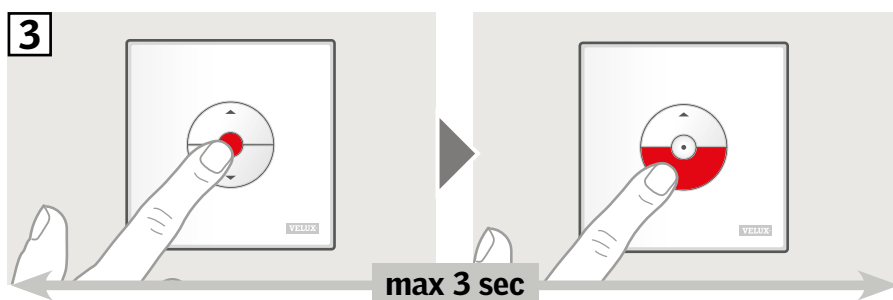


Note: Registration (2 and 3) must now be completed within the next 10 minutes.

- 2 Press PAIR button on the wall switch for 1 second.

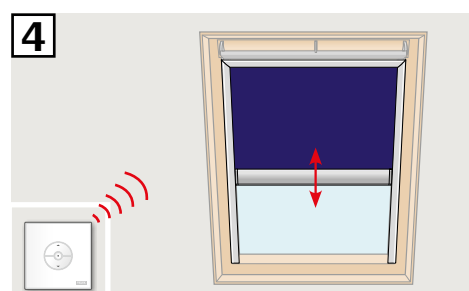


- 3 Press the STOP key and then the DOWN key within 3 seconds.



- 4 The blind can now be operated with the wall switch.

Note: The motor must be adjusted to the size of the window before full operation of the blind begins. This is done by running the blind all the way up and down without interruption using the wall switch.

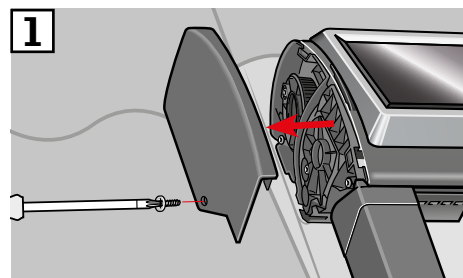
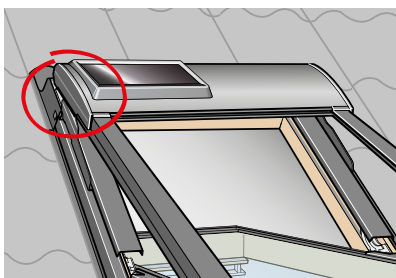


If a non-functional wall switch must be replaced or if the wall switch cannot find certain products, the products can be prepared for registration by resetting them manually.

Note: Reset products cannot be operated until they have been registered in the wall switch again.

Important: This only applies to KLI 313.

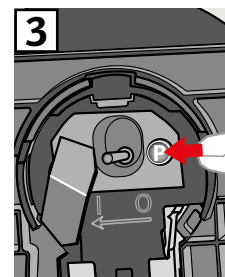
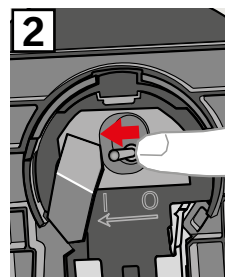
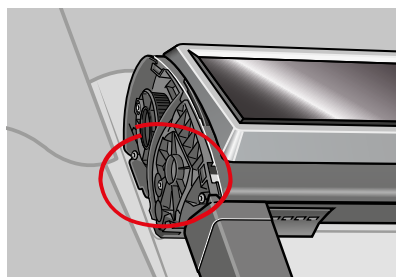
1 Remove plastic cover.



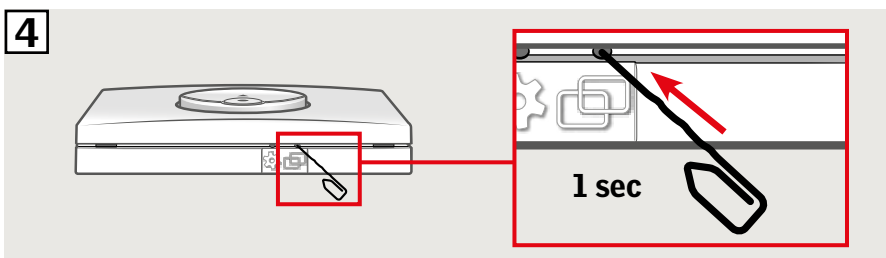
2 Set switch to position I.

3 Press button P briefly.

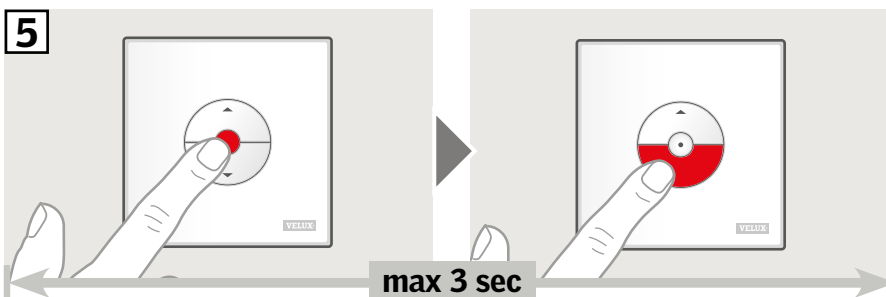
Note: Registration (4) and (5) must now be completed within the next 10 minutes.



4 Press PAIR button on the wall switch for 1 second.



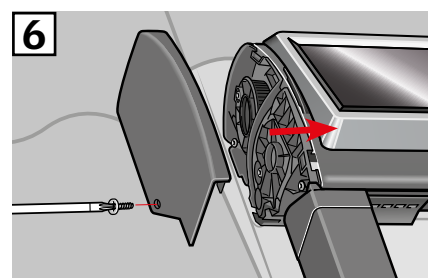
5 Press the STOP key and then the DOWN key within 3 seconds.



6 Replace plastic cover.

The awning blind can now be operated with the wall switch.

Note: The motor must be adjusted to the size of the window before full operation of the awning blind begins. The adjustment will take place automatically the first time the awning blind is operated. Before the awning blind runs to the preferred position, it runs all the way up and down. Do not interrupt the adjustment!



Setup of wall switch KLI 313 to operate VELUX INTEGRA® solar roller shutter SSL/SST

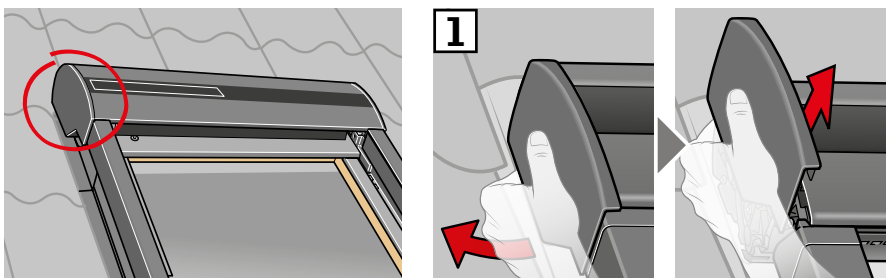
VELUX®

If a non-functional wall switch must be replaced or if the wall switch cannot find certain products, the products can be prepared for registration by resetting them manually.

Note: Reset products cannot be operated until they have been registered in the wall switch again.

Important: This only applies to KLI 313.

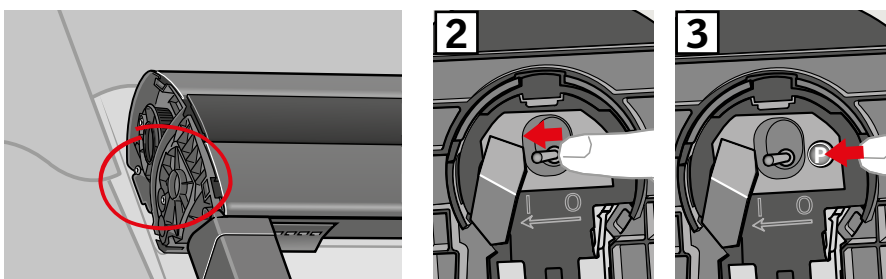
1 Remove plastic cover.



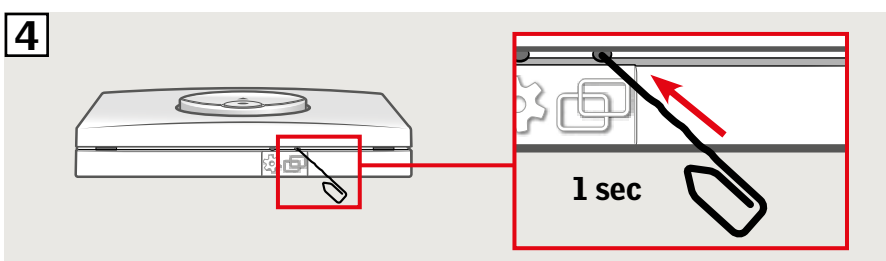
2 Set switch to position I.

3 Press button P briefly.

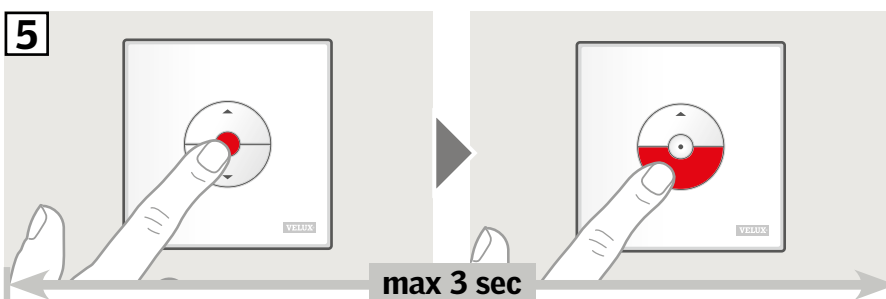
Note: Registration (4) and (5) must now be completed within the next 10 minutes.



4 Press PAIR button on the wall switch for 1 second.



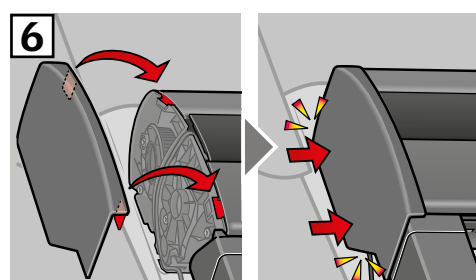
5 Press the STOP key and then the DOWN key within 3 seconds.



6 Replace plastic cover.

The roller shutter can now be operated with the wall switch.

Note: The motor must be adjusted to the size of the window before full operation of the roller shutter begins. The adjustment will take place automatically the first time the roller shutter is operated. Before the roller shutter runs to the preferred position, it runs all the way up and down. Do not interrupt the adjustment!

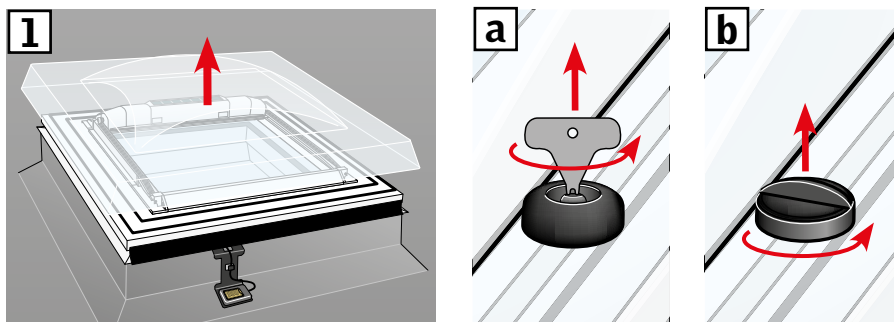


If a non-functional wall switch must be replaced or if the wall switch cannot find certain products, the products can be prepared for registration by resetting them manually.

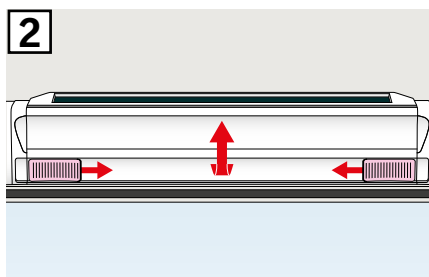
Note: Reset products cannot be operated until they have been registered in the wall switch again.

Important: This only applies to KLI 313.

1 Remove dome/top unit.

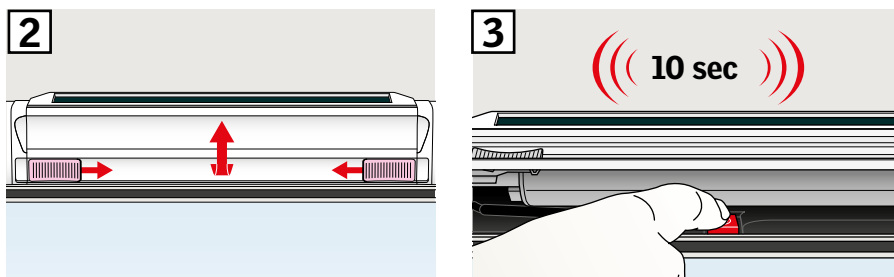


2 Open compartment on the solar awning blind.

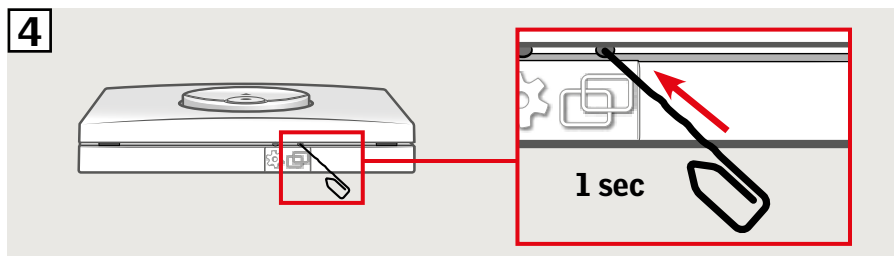


3 Press and hold button. The awning blind runs back and forth 3 times.

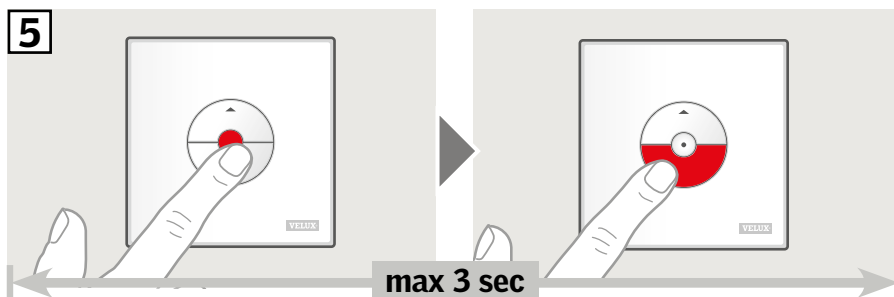
Note: Registration (4 and 5) must now be completed within the next 10 minutes.



4 Press PAIR button on the wall switch for 1 second.



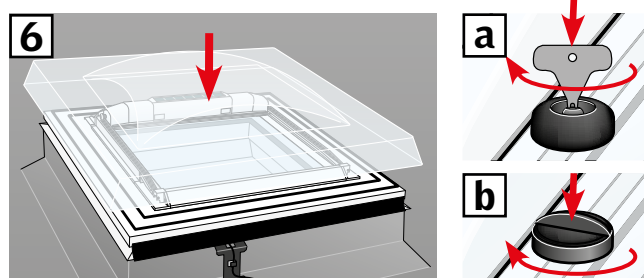
5 Press the STOP key and then the DOWN key within 3 seconds.



6 Replace dome/top unit.

The awning blind can now be operated with the wall switch.

Note: The motor must be adjusted to the size of the window before full operation of the awning blind begins. The adjustment will take place automatically the first time the awning blind is operated. Before the awning blind runs to the preferred position, it opens and closes. Do not interrupt the adjustment!



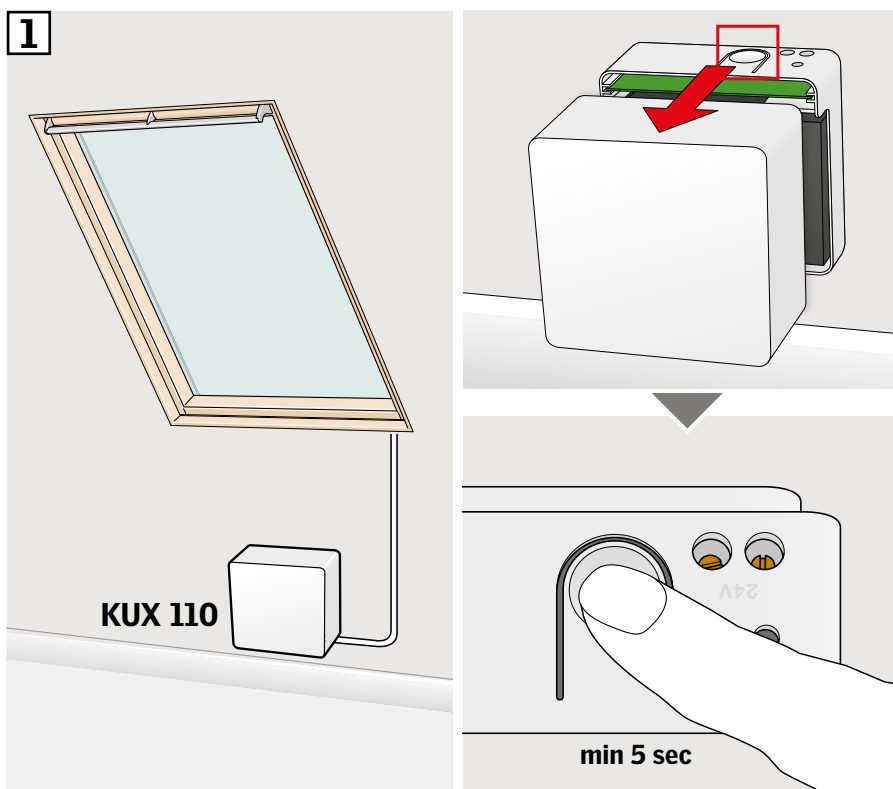
If a non-functional wall switch must be replaced or if the wall switch cannot find certain products, the products can be prepared for registration by resetting them manually.

Note: Reset products cannot be operated until they have been registered in the wall switch again.

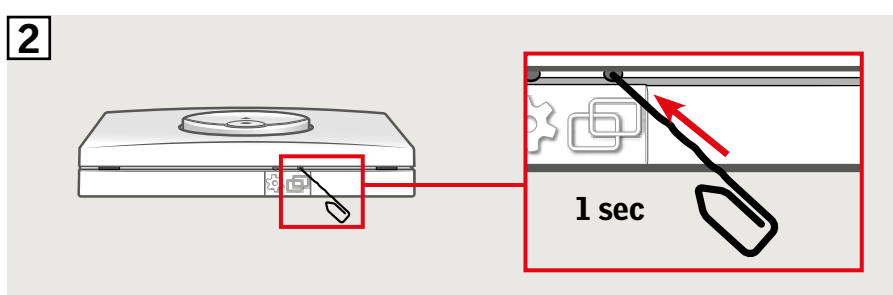
Important: The wall switch type must match the relevant product(s).

- 1 The products connected can be reset by removing the cover of the power supply unit and pressing the RESET button for at least 5 seconds. The connected products will run briefly back and forth in random order to indicate that they are ready for pairing.

Note: Registration (2 and 3) must now be completed within the next 10 minutes.

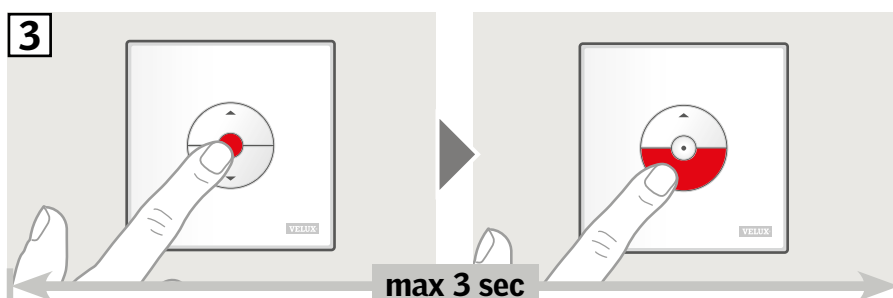


- 2 Press PAIR button on the wall switch for 1 second.



- 3 Press the STOP key and then the DOWN key within 3 seconds.

The products can now be operated with the wall switch.



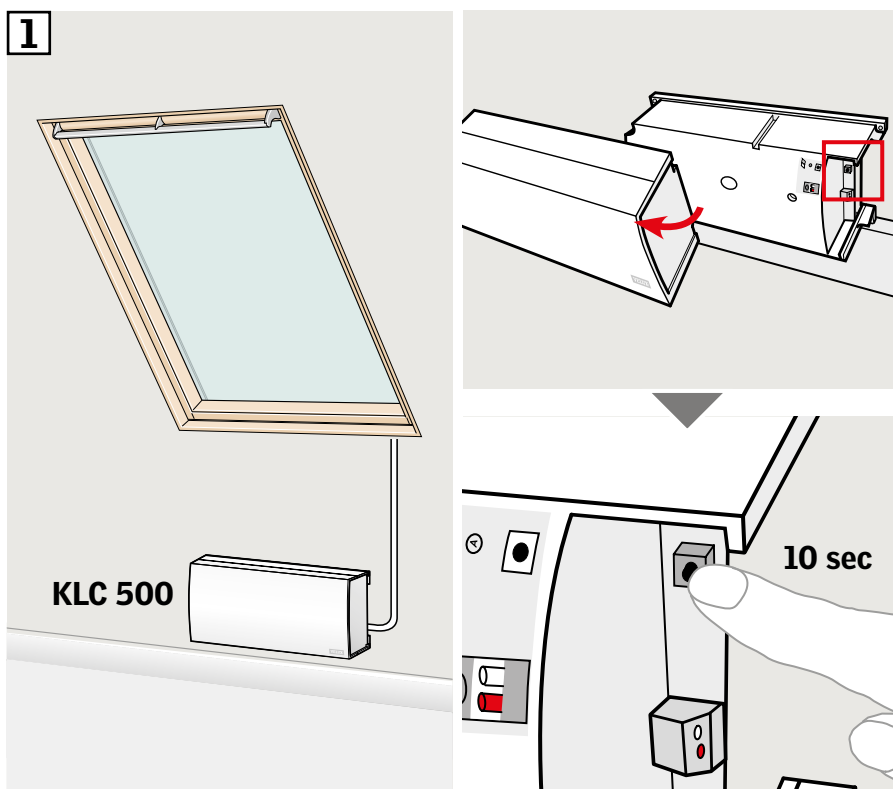
If a non-functional wall switch must be replaced or if the wall switch cannot find certain products, the products can be prepared for registration by resetting them manually.

Note: Reset products cannot be operated until they have been registered in the wall switch again.

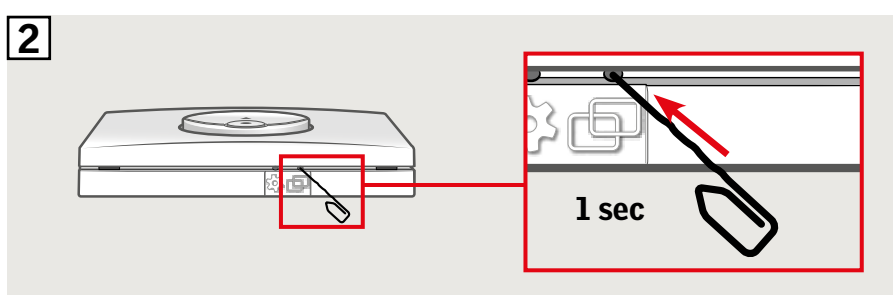
Important: The wall switch type must match the relevant product(s).

- 1 The products connected can be reset by removing the cover of the control unit and pressing the RESET button for at least 10 seconds. The connected products will run briefly back and forth in random order to indicate that they are ready for pairing.

Note: Registration (2 and 3) must now be completed within the next 10 minutes.

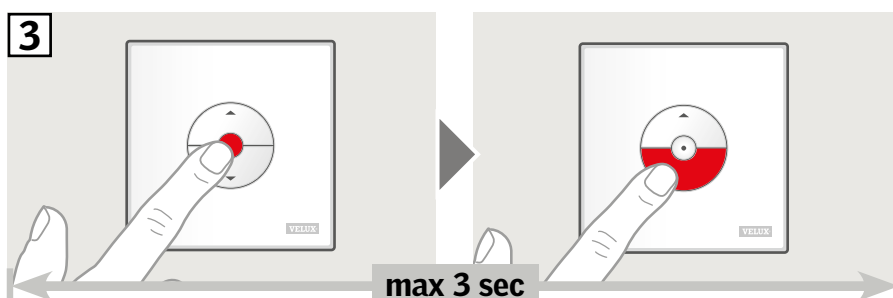


- 2 Press PAIR button on the wall switch for 1 second.



- 3 Press the STOP key and then the DOWN key within 3 seconds.

The products can now be operated with the wall switch.



Setup of wall switch KLI 311/312/313 to operate electrical products already registered in VELUX INTEGRA® control pad KLR 200

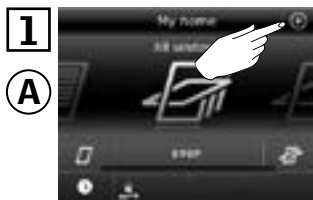
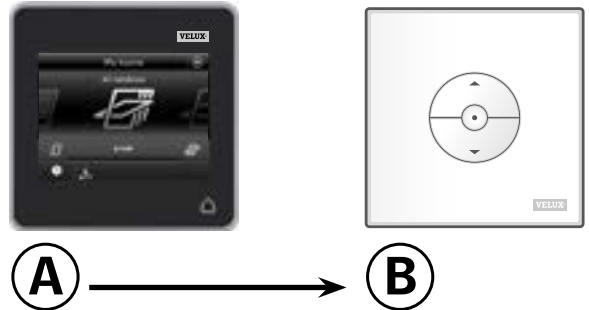


The instructions below show how to copy the contents of control pad KLR 200 to wall switch KLI 311/312/313. See also the instructions for the control pad.

Important: The wall switch type must match the relevant product(s).

Control pad KLR 200 to send a copy is called control **A**.
Wall switch KLI 311/312/313 to receive a copy is called control **B**.

First execute items 1-5 with **A**.



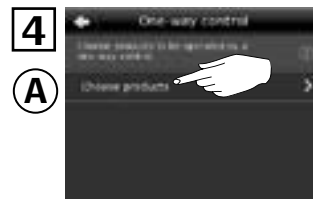
Tap **+**.



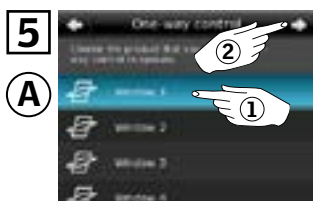
Tap "New product".



Tap "Prepare one-way control".

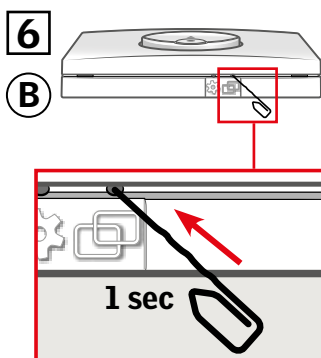


Tap "Choose products".



Scroll down the display and choose the product to be added **1**.
Note: individual products can be identified by tapping the icon.
Tap \Rightarrow **2**.

You now have 10 minutes to execute item 6 with **B**.



Press PAIR button on **B** for 1 second to register the product.
You can now operate the chosen product with **B**.



Tap \triangle to finish.
Note: To add more products, tap "Choose more" and repeat items 5-7.

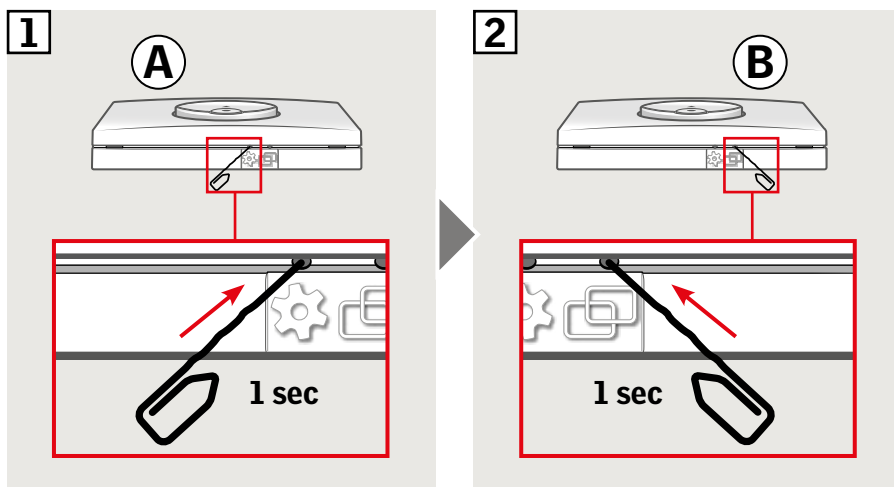
Setup of a new wall switch KLI 311/312/313 in addition to an existing wall switch KLI 311/312/313

Important: The new wall switch must be of the same type as the existing wall switch.

- Ⓐ Existing wall switch
- Ⓑ New wall switch



- 1 Prepare the product for registration by pressing the GEAR button on the existing wall switch Ⓐ for 1 second. The product will start running briefly back and forth.
- 2 Press PAIR button on the new wall switch Ⓑ for 1 second.



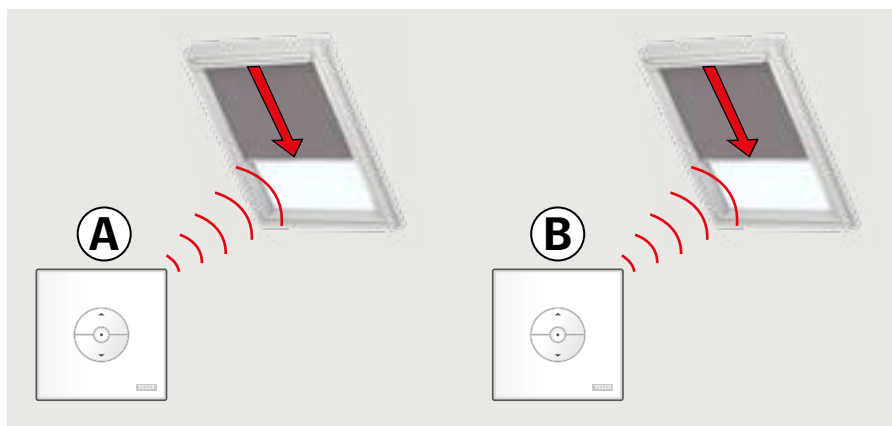
The product can now be operated with both wall switches.



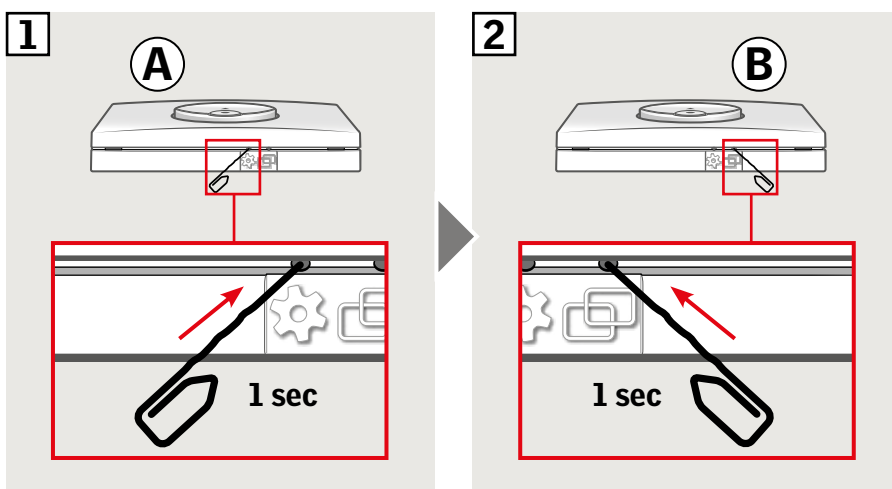
Important: All wall switches must be of the same type.

Wall switches **A** and **B** operate separate products.

The example shows how wall switch **B** is set up to operate both products.

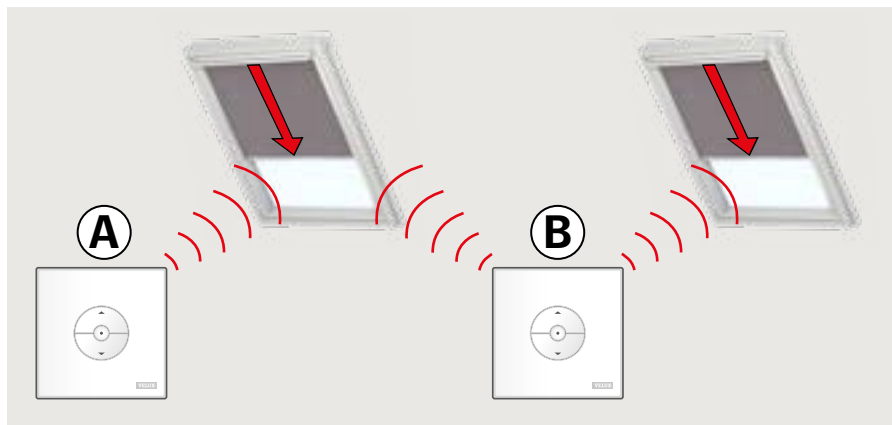


- 1 Press the GEAR button on wall switch **A** for 1 second.
- 2 Press the PAIR button on wall switch **B** for 1 second.



Wall switch **B** can now operate both products.

Wall switch **A** can still operate its own product.

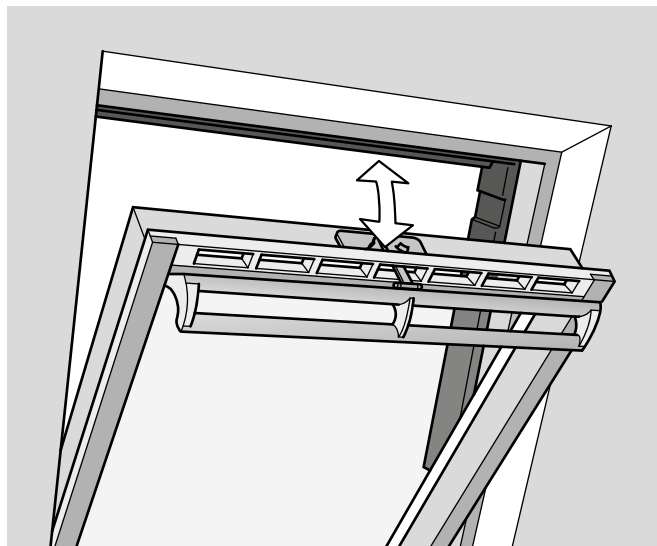


Manual operation of centre-pivot windows

You can open and close your centre-pivot window manually. If the window is already open, you must close it fully with the wall switch first.

- Open the window by pulling downwards on the control bar of the window.
- Close the window again by pushing the control bar back again.

Note: If you have opened the window manually, you must also close it manually to be able to operate it with the wall switch again. This also applies to enabling operation of programs and to ensure window closes automatically in case of rain.



Manual operation of top-hung roof window

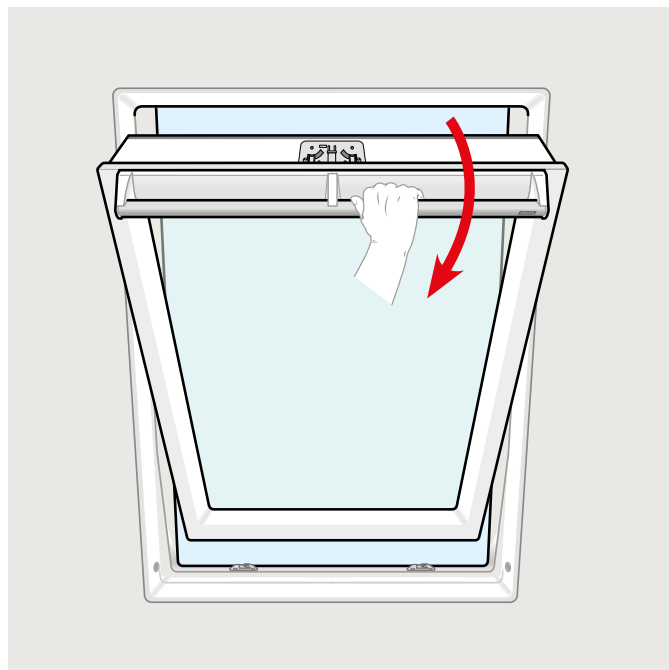
You can open and close your window manually as a centre-pivot window.

If the window is already open, you must close it fully with the wall switch first.

- Open the window by pulling downwards on the control bar of the window.
- Close the window again by pushing back the control bar.

Note: Manual operation is, however, dependent on the window being connected to the mains supply. This should be confirmed with the included wall switch before continuing. If the window does not react to signal from the wall switch, it might indicate that the power supply to the window has been interrupted. The window must not be operated manually until the power supply has been re-established as this may damage the window construction/the gaskets on the window.

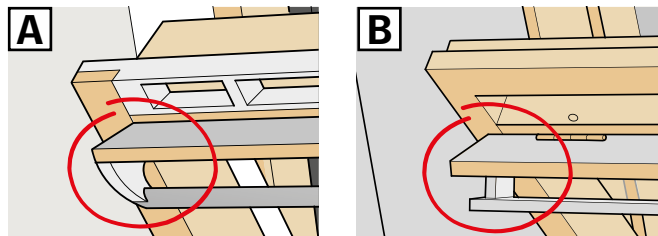
Note: If you have opened the window manually, you must also close it manually to be able to operate it with the wall switch again. This also applies to enabling operation of programs and to ensure that the window will close automatically in case of rain.



Manual closing without using the wall switch

In case of power failure or discharged battery, you can close your centre-pivot window manually by disengaging the chain on the ventilation flap of the window.

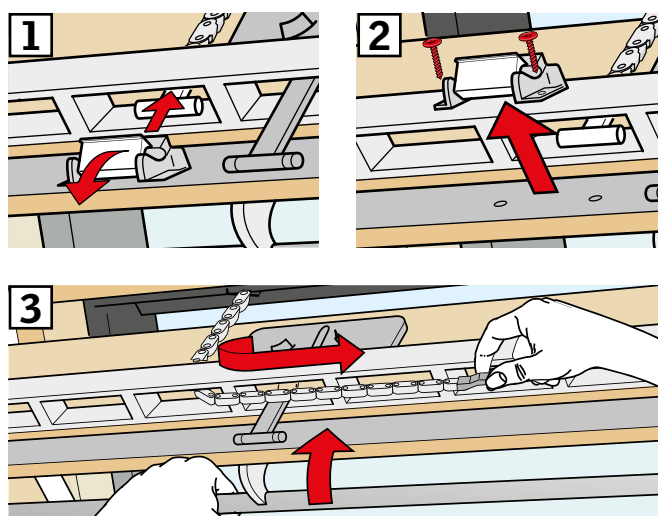
There are two ways of manual closing depending on window type. The ventilation flap can look like **A** or **B**. See how to disengage the chain on the ventilation flap according to your window type below.



A

The ventilation flap of the window looks like **A**:

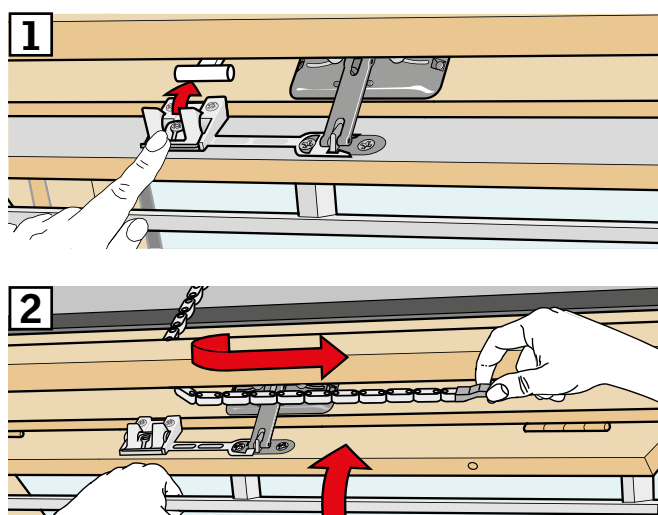
- 1 Disengage the chain by pressing the release clip on the flap bracket.
- 2 Remove the flap bracket.
- 3 Fold the chain as shown, and close the ventilation flap of the window to ventilation position.



B

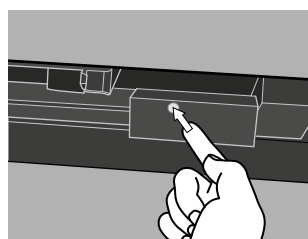
The ventilation flap of the window looks like **B**:

- 1 Disengage the chain by pressing the release clip on the flap bracket.
- 2 Fold the chain as shown, and close the window manually.



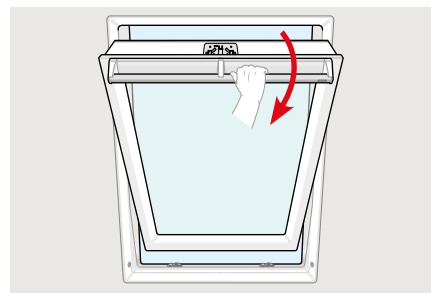
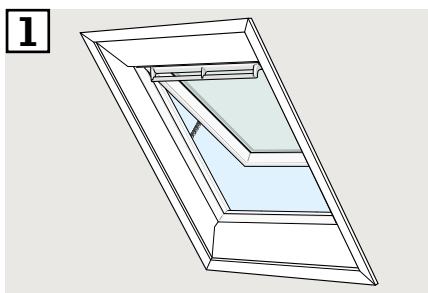
When the power has been reconnected or the battery has been recharged, you must re-engage the chain.

- Open the window manually and unfold the chain.
- Replace the flap bracket if the ventilation flap looks like **A**.
- Run back the chain by pressing the test button on the window operator briefly.
- Close the window manually.

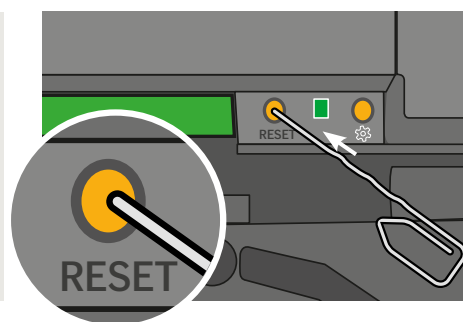
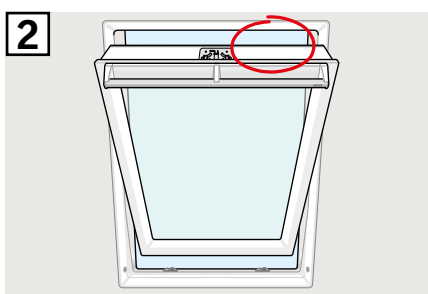


The window has been opened with the wall switch but needs to be closed without using the wall switch.

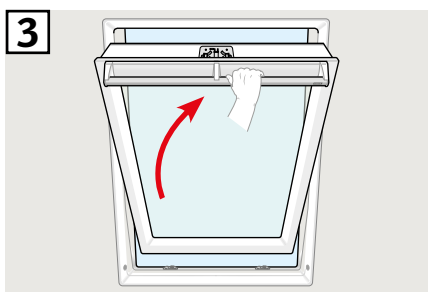
- 1 Ensure that the power is turned on. Open the window manually with the control bar.



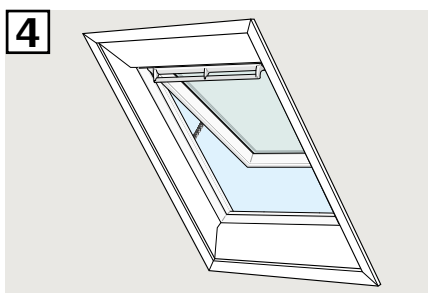
- 2 Press the RESET button on the control box briefly (1 second).



- 3 Close the window with the control bar within 30 seconds. If the 30 seconds are exceeded, go back to step 2.



- 4 When the window has been closed with the control bar, it will automatically close completely.



Closing of VELUX INTEGRA® flat roof window CVP/CVU without using the wall switch

VELUX®

Flat roof windows

- 1 Carefully remove the cover cap on the kerb.
- 2 Press the test button on the window operator behind the cover cap briefly and refit the cover cap.

