

ENGLISH: Wiring

DEUTSCH: Leitungsführung

FRANÇAIS: Câblage

DANSK: Ledningsføring

NEDERLANDS: Bedrading

ITALIANO: Cablaggio

ESPAÑOL: Cableado

BOSANSKI: Elektro-instalacija

БЪЛГАРСКИ: Окабеляване

ČESKY: Elektroinstalace

EESTI: Juhtmed

HRVATSKI: Ožičenje

LATVISKI: Elektroinstalācija

LIETUVIŲ: Elektros laidai

MAGYAR: Vezetékelés

NORSK: Ledningsføring

POLSKI: Prowadzenie
przewodów

PORTUGUÊS: Ligação do cabo

ROMÂNĂ: Cabluri

РУССКИЙ: Проводка

SLOVENŠČINA: Napeljava

SLOVENSKY: Vedenie

SRPSKI: Kabliranje

SUOMI: Kaapeli

SVENSKA: Kabeldragning

TÜRKÇE: Kablolama

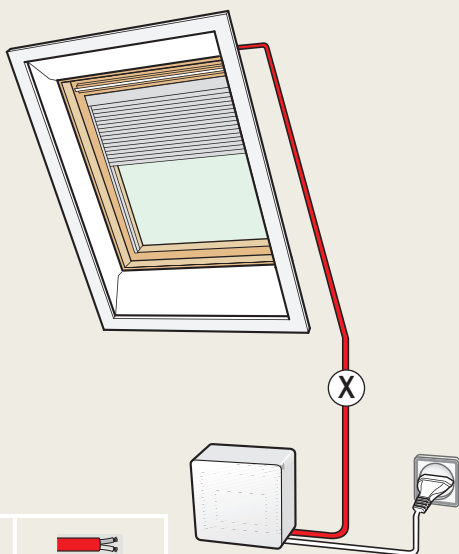





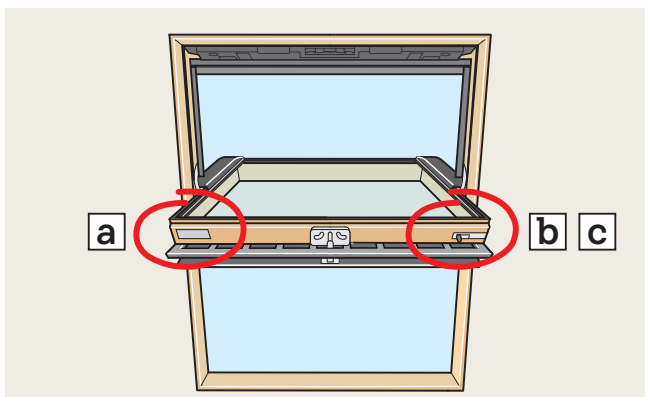
velux.com

Instructions
with text

English • Deutsch • Français • Dansk • Nederlands
Italiano • Español • Bosanski • Български • Český
Eesti • Hrvatski • Latviski • Lietuvių • Magyar • Norsk
Polski • Português • Română • Русский • Slovenščina
Slovensky • Srpski • Suomi • Svenska • Türkçe • Українська



X m	 mm ²
0 - 16	2 x 0.50
0 - 20	2 x 0.75
0 - 50	2 x 1.50



a

VELUX® XXX **X**XXX XXXXXXXX
XX XXXX X

www.velux.com CE EN 14351-1:2006+A1:2010 452800-2011-XX

Pages 4-9

b

A-Z

450710-08199 XXX **X**XXX XXXX

VELUX® www.velux.com

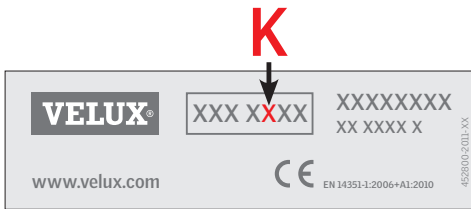
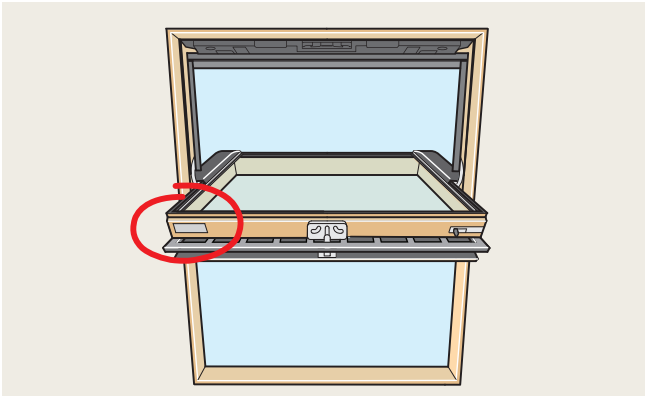
Pages 10-13

c

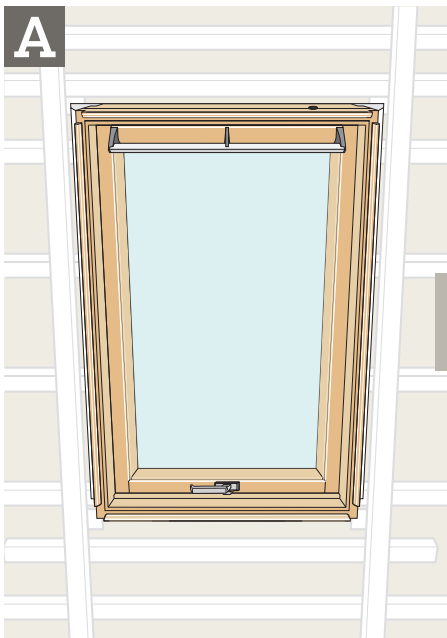
0-9

VELUX® XXX **X**XXX XXXX

Pages 14-18

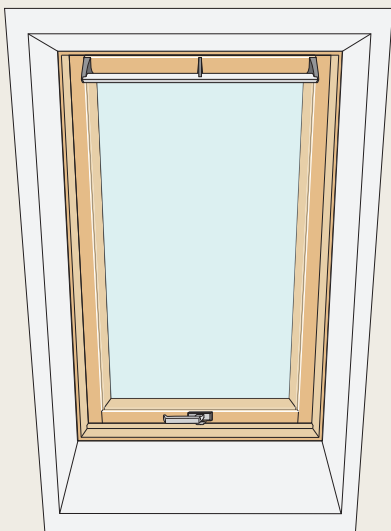


A



Pages 6-7

B

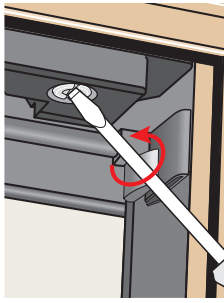
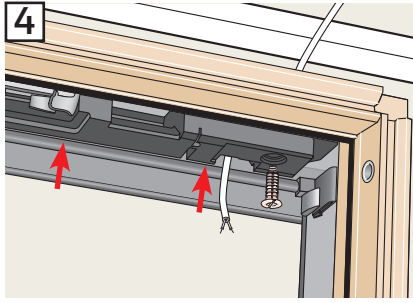
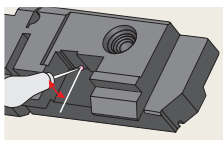
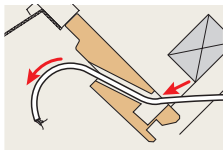
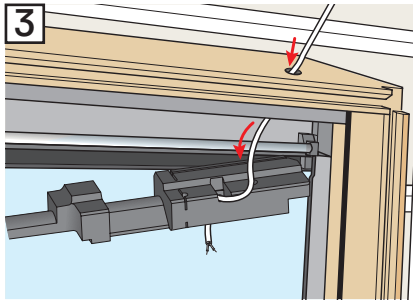
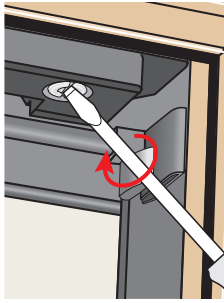
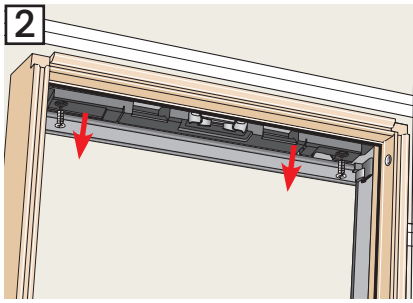
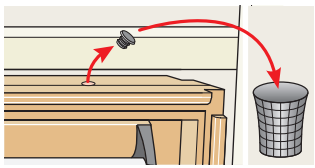
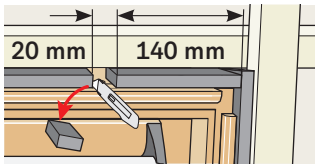
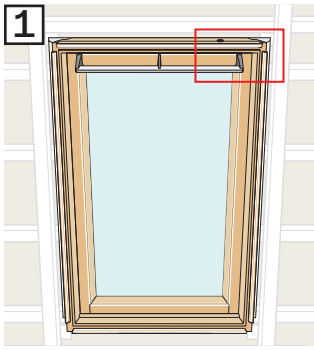


Pages 8-9

A

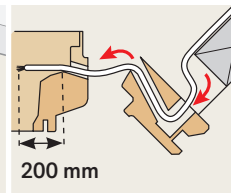
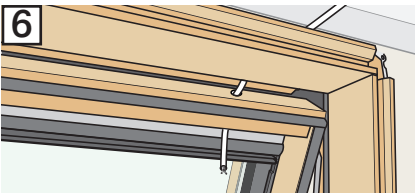
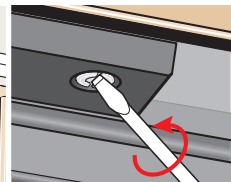
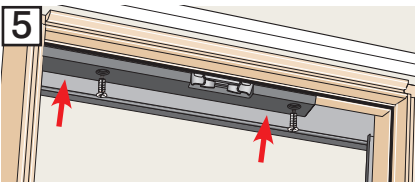
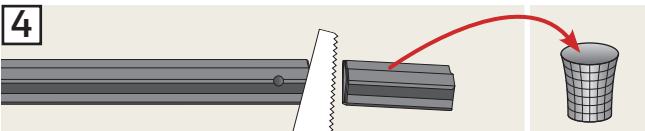
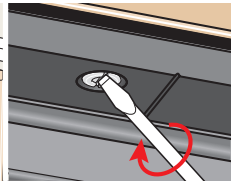
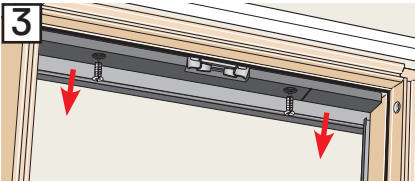
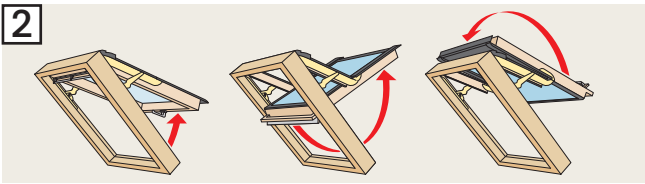
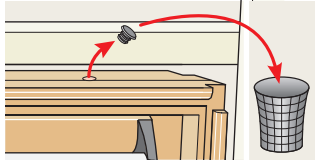
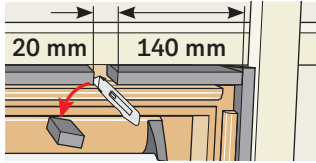
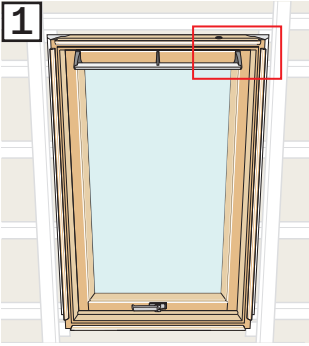
GGL/GGU

VELUX XXX XXXX XXXXXXXX XX XXXXX
www.velux.com CE EN 14353-1:2004+A2:2005



A

GPL/GPU



B

GGL/GGU

VELUX

XXX XXXX

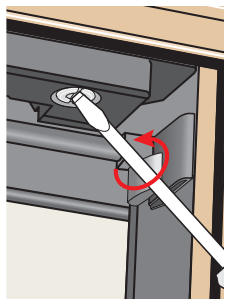
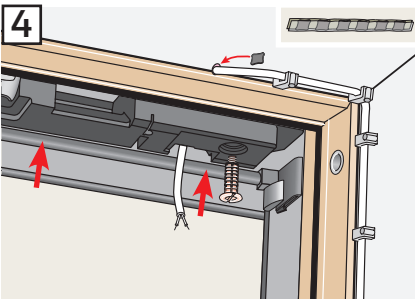
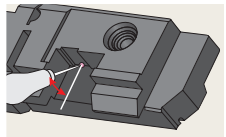
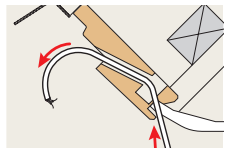
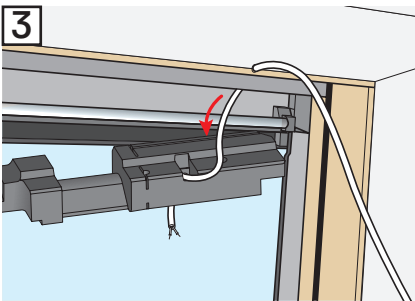
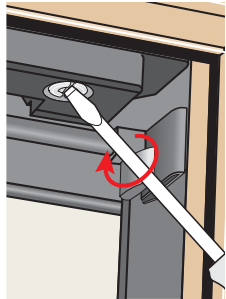
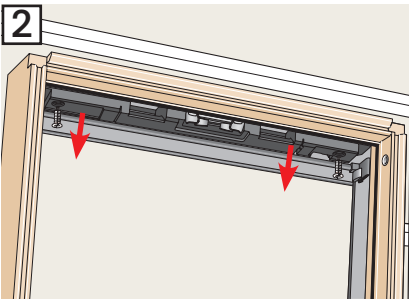
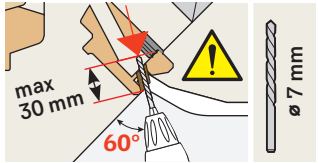
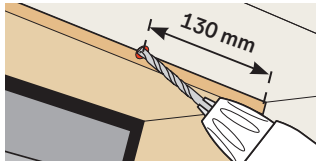
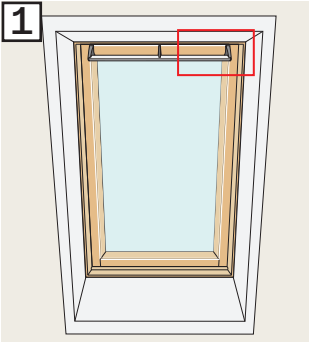
XXXXXXXXXX
XX XXXXX X

www.velux.com

CE

EN 12551:2006+A1:2009

© 2009 VELUX



B

GPL/GPU

VELUX

XXX XXXX

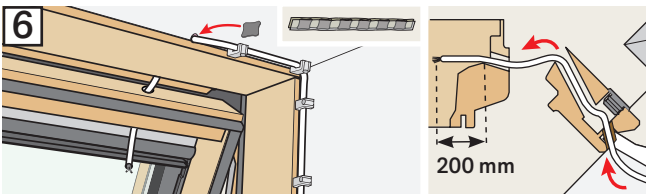
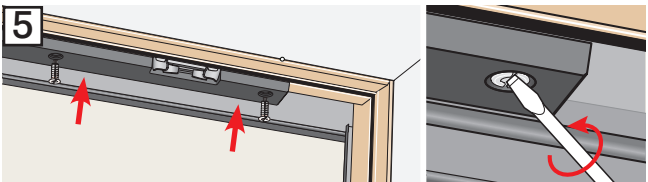
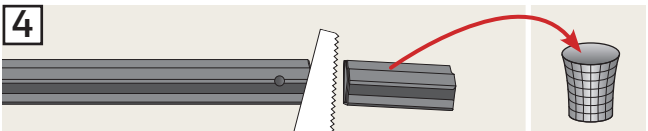
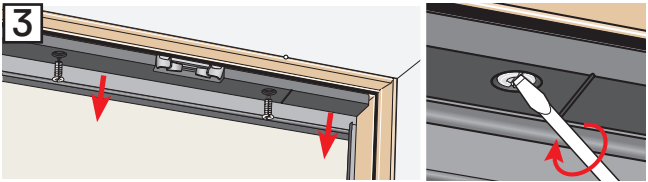
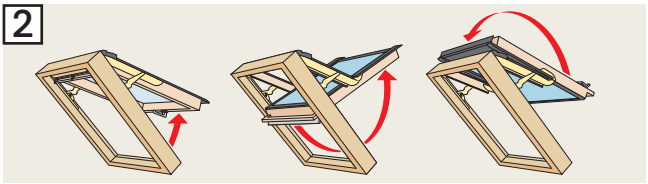
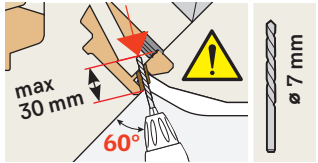
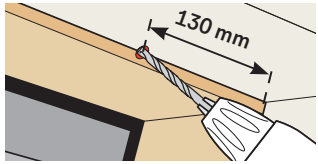
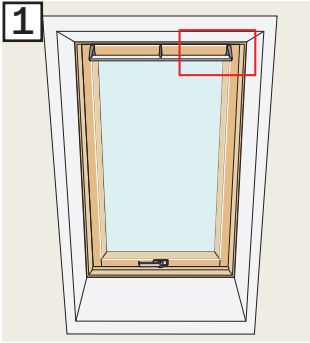
XXXXXXXXX
XX XXXX X

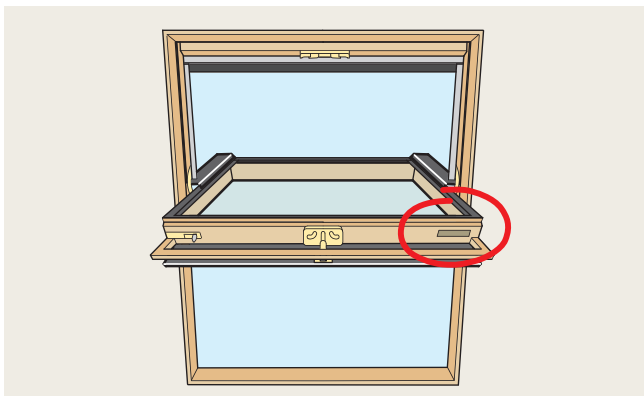
www.velux.com

CE

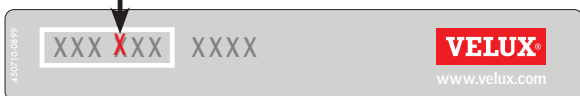
EN 14186-1:2004+A1:2010

0000000000

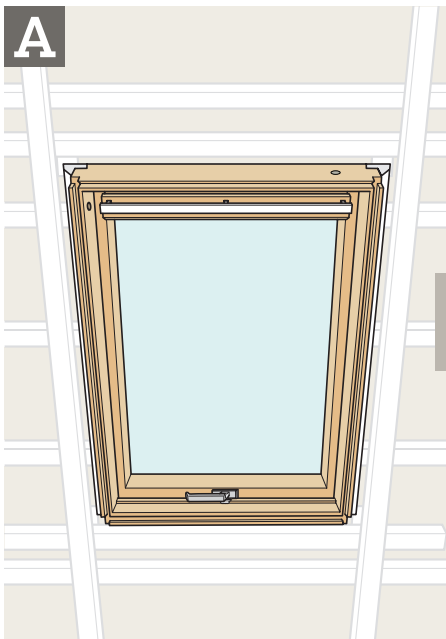




A-Z

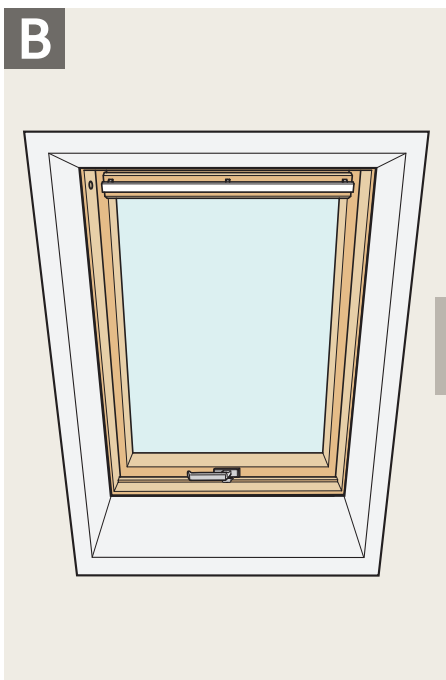


A



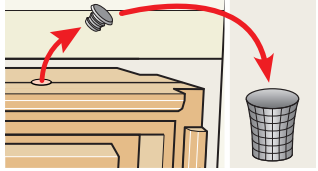
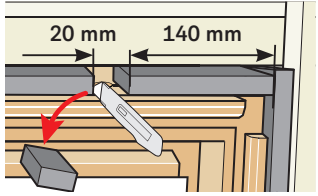
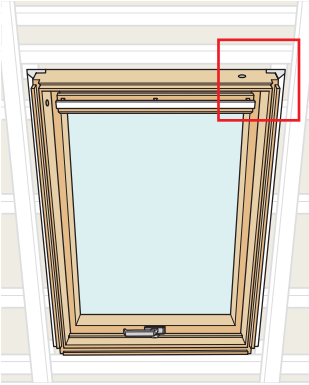
Page 12

B

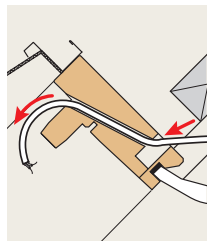
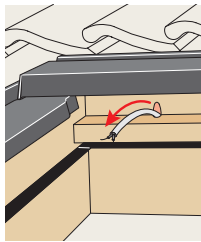
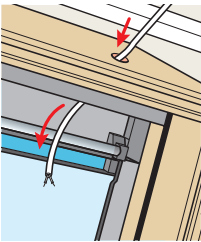
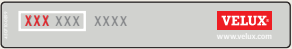


Page 13

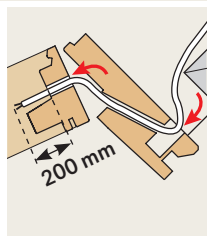
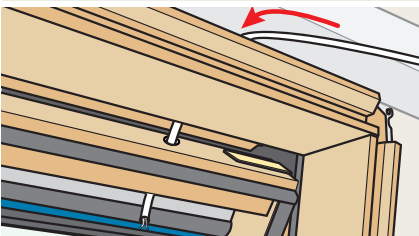
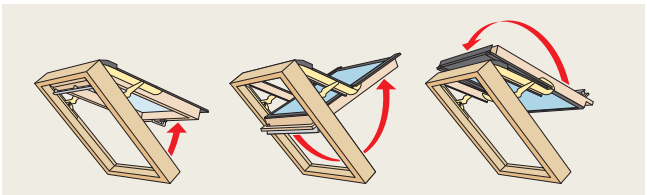
A



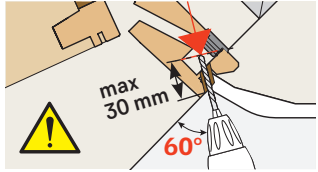
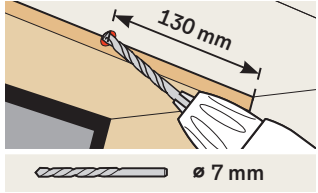
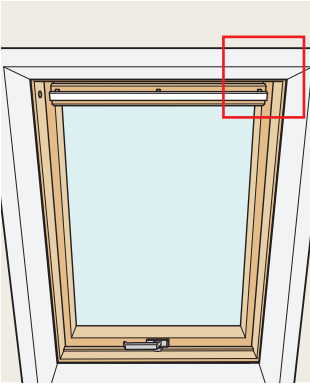
GGL/GGU/GFL/VL/VU



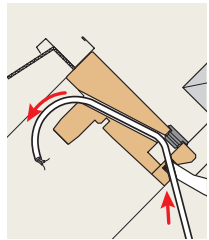
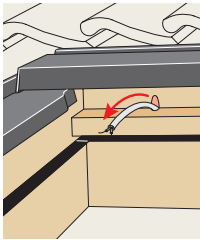
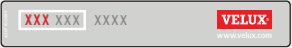
GHL/GHU/GPL/GPU



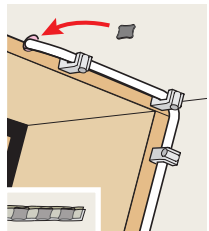
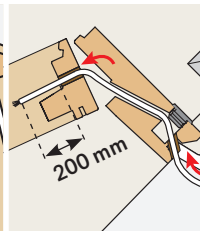
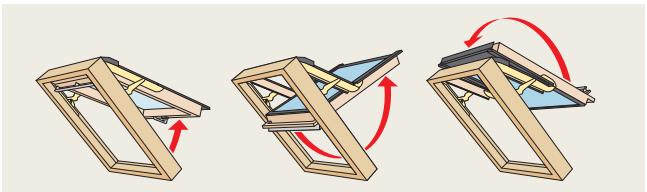
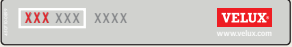
B

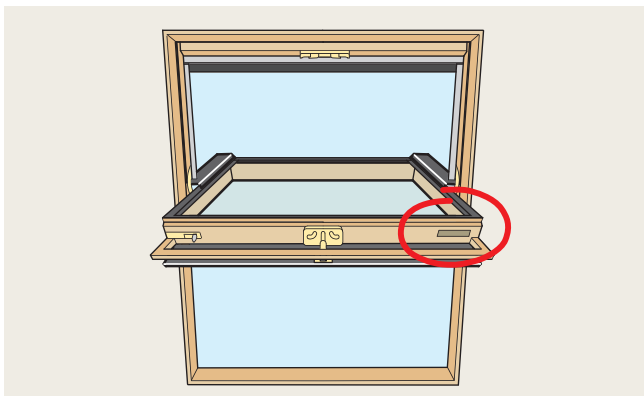


GGL/GGU/GFL/VL/VU



GHL/GHU/GPL/GPU





0-9



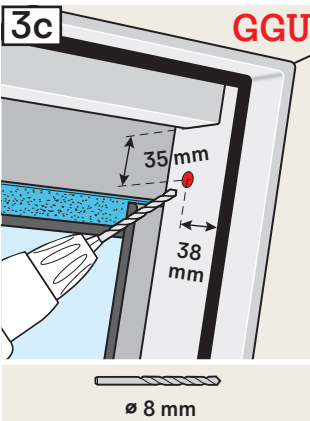
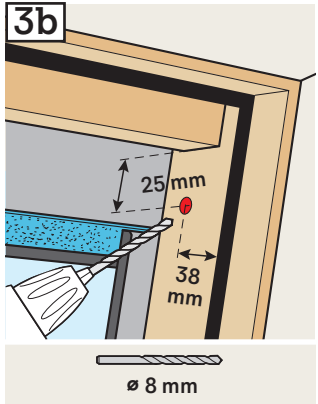
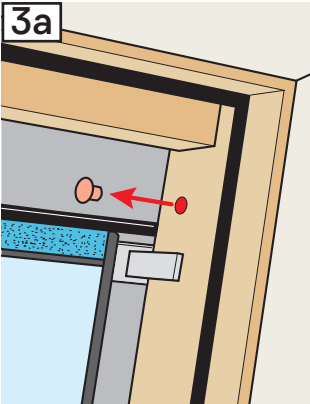
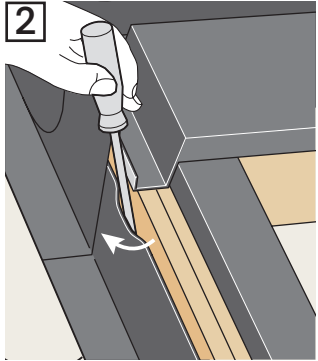
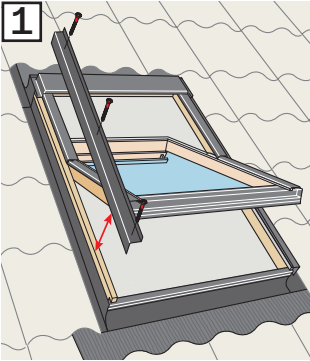
GGL/GFL/GZL/GGU Page 16

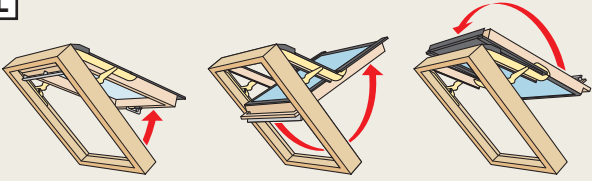
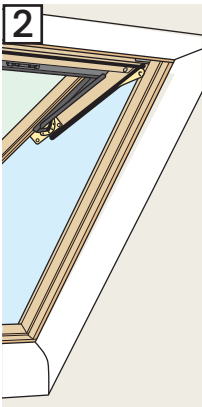
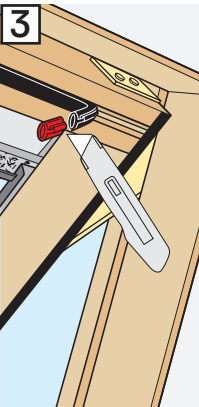
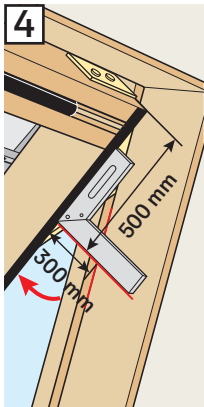
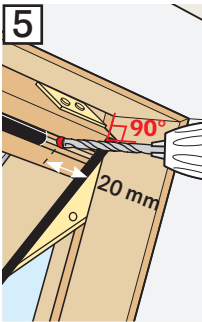
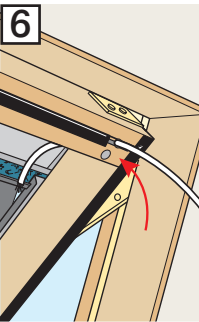
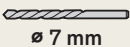
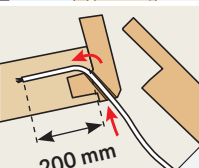
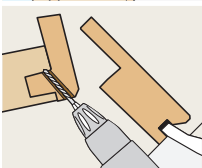
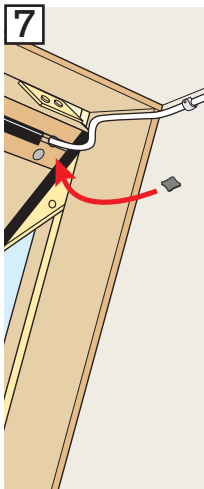
GPL/GPU

Page 17

GHL/VTL

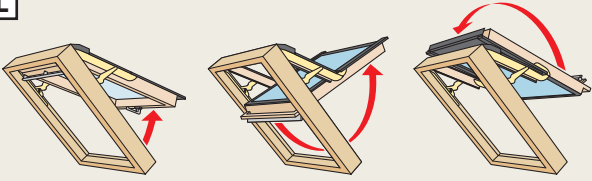
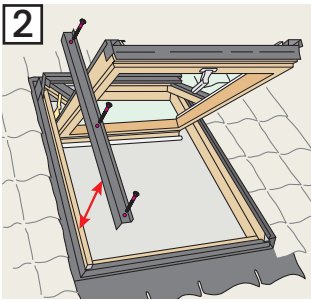
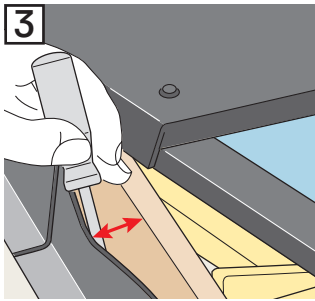
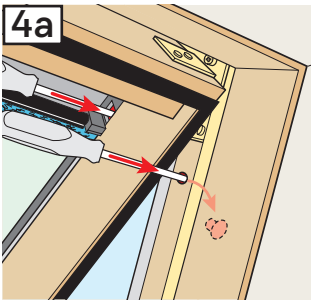
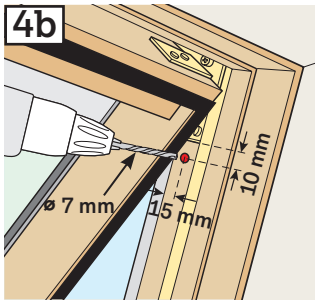
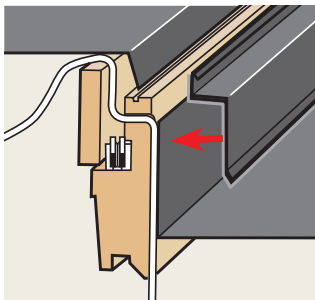
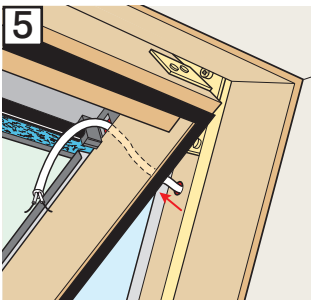
Page 18



1**2****3****4****5****6****7**

ø 7 mm



1**2****3****4a****4b****5**

AR: VELUX Export (VELUX A/S) + 45 4516 7885	IT: VELUX Italia s.p.a. 045/6173666
AT: VELUX Österreich GmbH 02245/32 3 50	JP: VELUX-Japan Ltd. 0570-00-8141
AU: VELUX Australia Pty. Ltd. 1300 859 856	KR: VELUX Export (VELUX A/S) + 45 4516 7885
BA: VELUX Bosna i Hercegovina d.o.o. 033/626 493, 626 494	LT: VELUX Lietuva, UAB (85) 270 91 01
BE: VELUX Belgium (010) 42.09.09	LV: VELUX Latvia SIA 67 27 77 33
BG: ВЕЛУКС България ЕООД 02/955 99 30	NL: VELUX Nederland B.V. 030 - 6 629 629
CA: VELUX Canada Inc. 1 800 88-VELUX (888-3589)	NO: VELUX Norge AS 22 51 06 00
CH: VELUX Schweiz AG 062 289 44 45	NZ: VELUX New Zealand Ltd. 0800 650 445
CL: VELUX Export (VELUX A/S) + 45 4516 7885	PL: VELUX Polska Sp. z o.o. (022) 33 77 000 / 33 77 070
CN: VELUX (CHINA) CO. LTD. 0316-607 27 27	PT: VELUX Portugal, Lda 21 880 00 60
CZ: VELUX Česká republika, s.r.o. 531 015 511	RO: VELUX România S.R.L. 0268-402740
DE: VELUX Deutschland GmbH 040 / 54 70 70	RS: VELUX Srbija d.o.o. 011 20 57 500
DK: VELUX Danmark A/S 45 16 45 16	SE: VELUX Svenska AB 042/20 83 80
EE: VELUX Eesti OÜ 621 7790	SI: VELUX Slovenija d.o.o. 01 724 68 68
ES: VELUX Spain, S.A.U. 91 509 71 00	SK: VELUX Slovensko, s.r.o. (02) 33 000 555
FI: VELUX Suomi Oy 0207 290 800	TR: VELUX Çatı Pencereleeri Ticaret Limited Şirketi 0 216 302 54 10
FR: VELUX France 0806 80 15 15 Service gratuit + prix appel	UA: ТОВ "ВЕЛЮКС Україна" (044) 2916070
GB: VELUX Company Ltd. 01592 778 225	US: VELUX America LLC 1-800-88-VELUX
HR: VELUX Hrvatska d.o.o. 01/5555 444	
HU: VELUX Magyarország Kft. (06/1) 436-0601	
IE: VELUX Company Ltd. 01 848 8775	