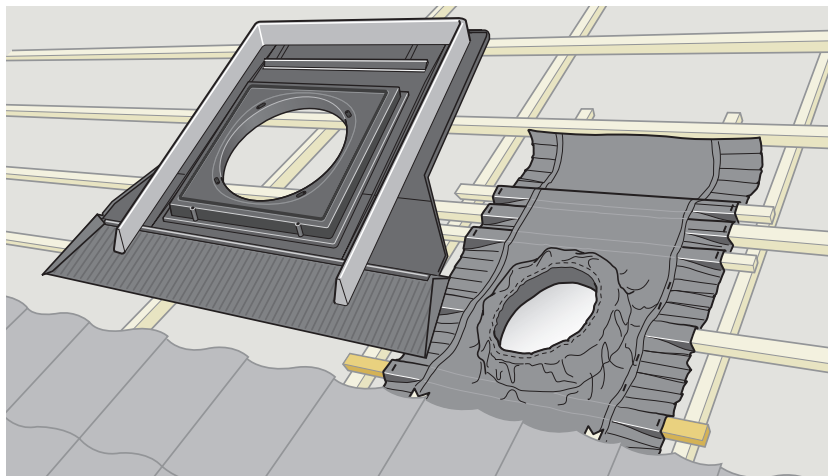
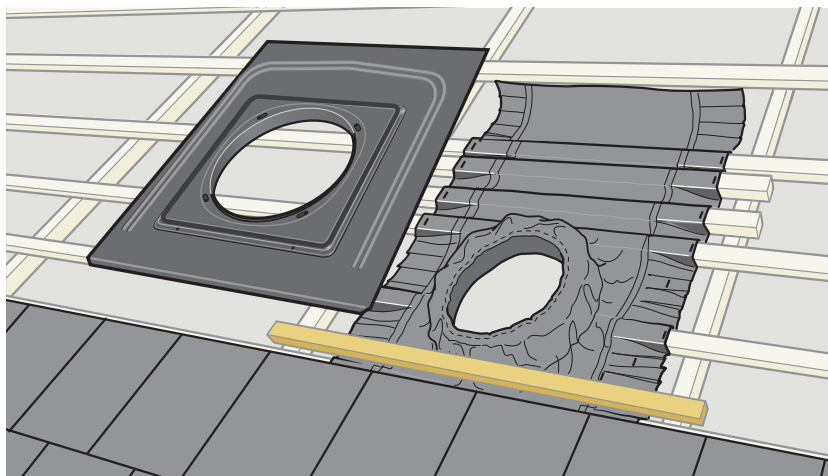


BFX



Pages
2-5

TWR
TWF

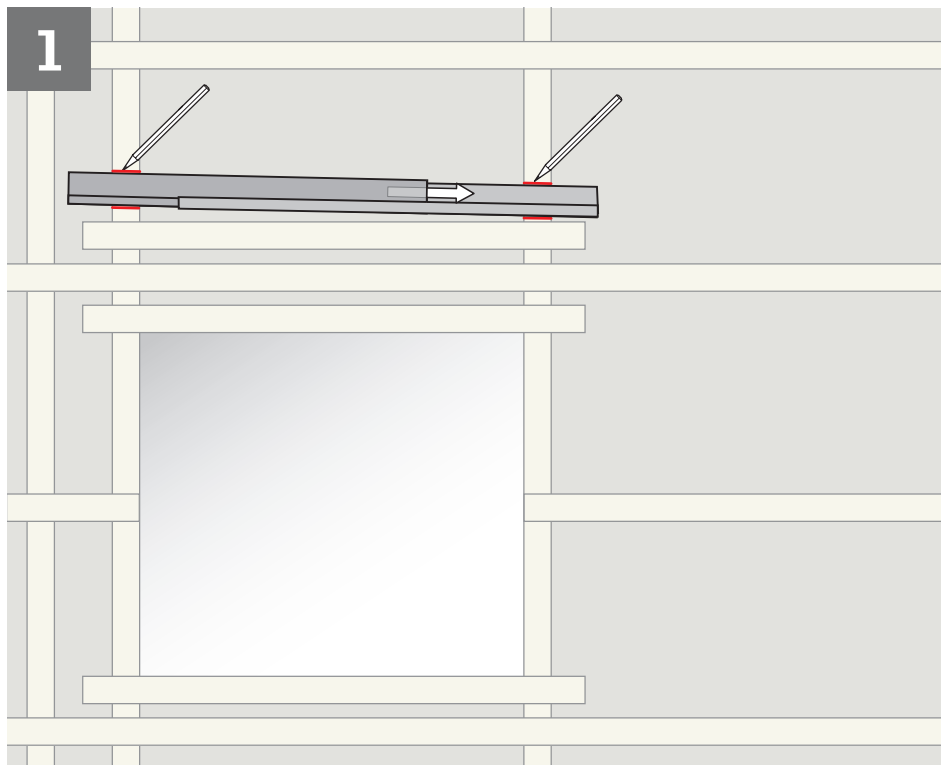


Pages
6-9

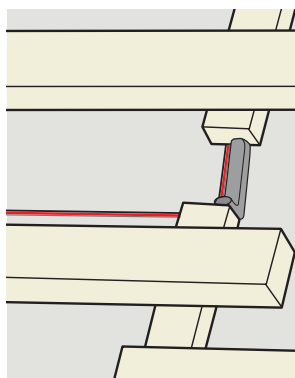
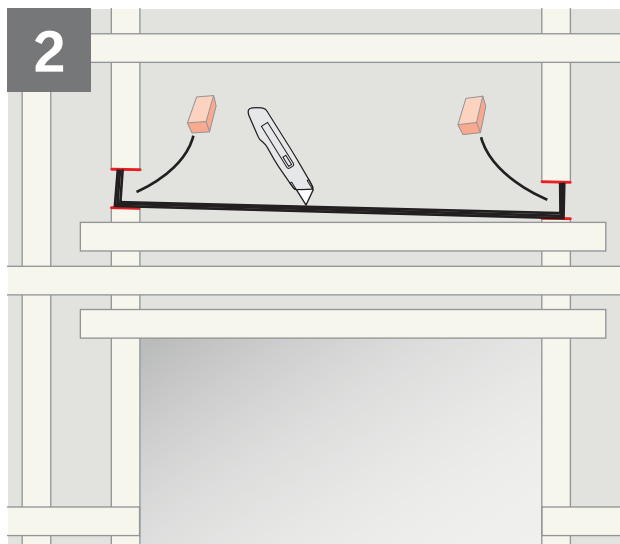
TLR
TLF

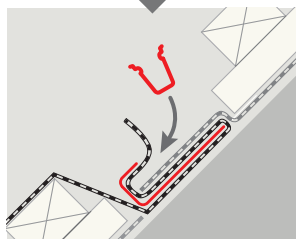
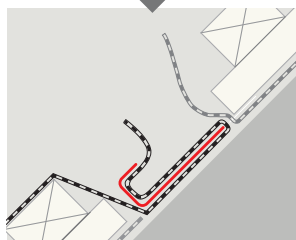
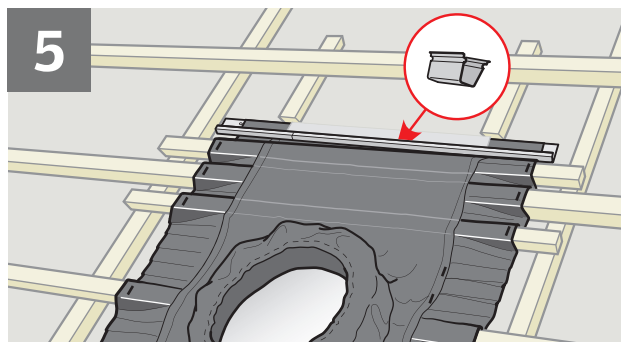
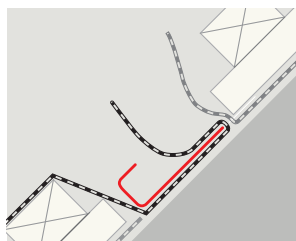
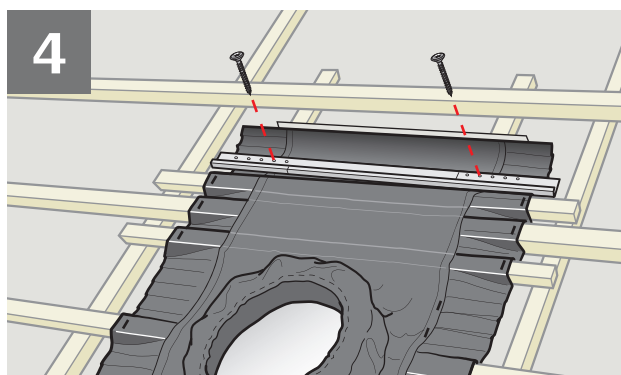
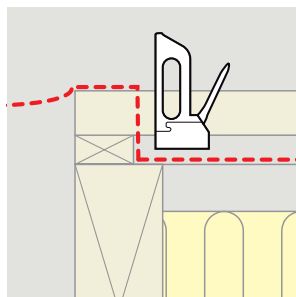
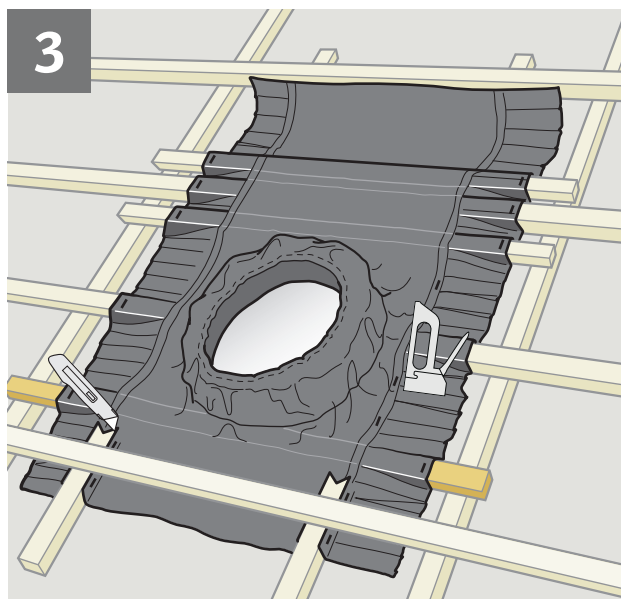


1

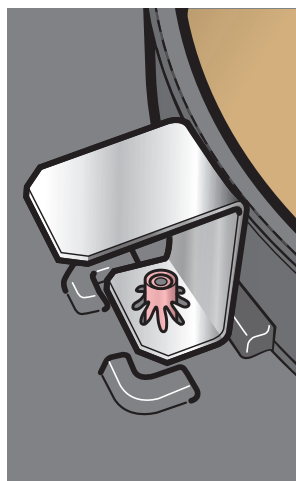
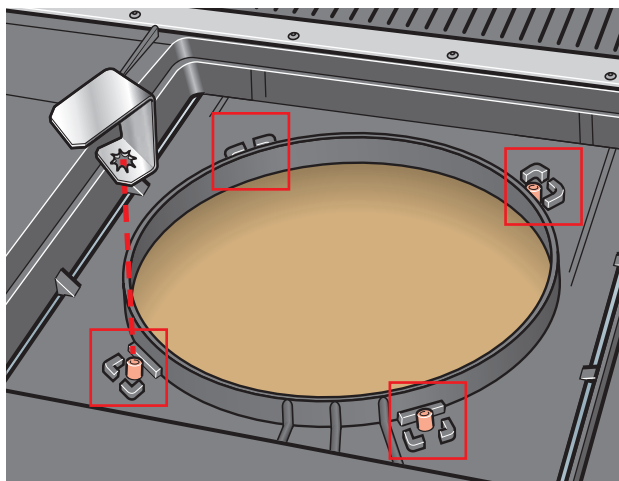
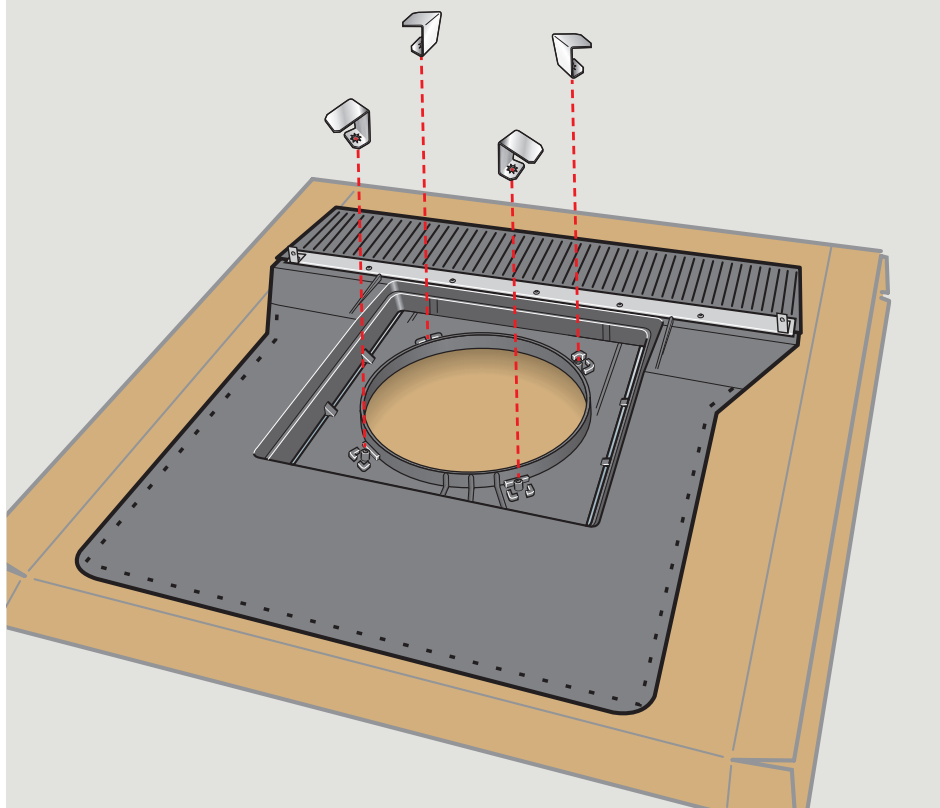


2

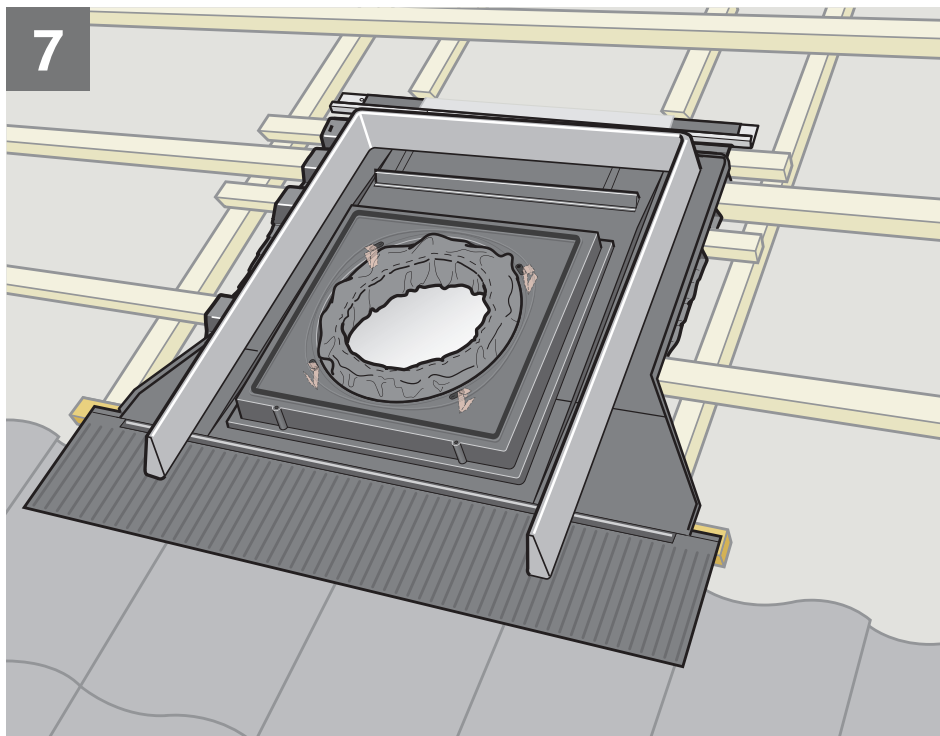




6

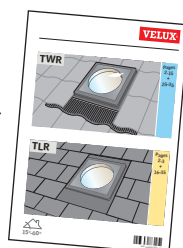


7

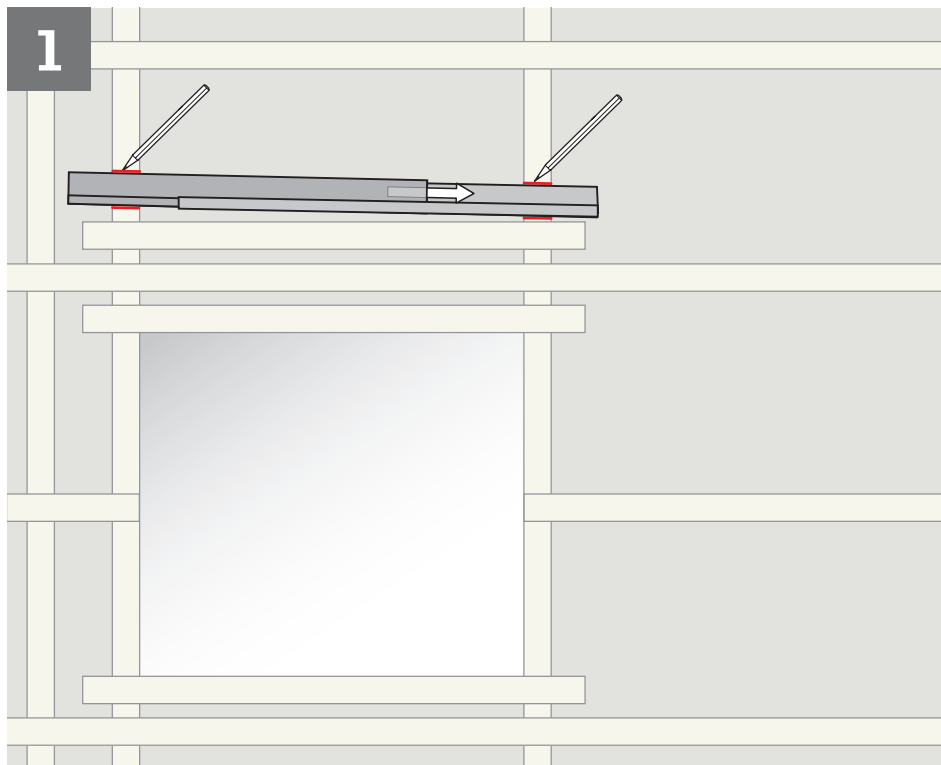


8

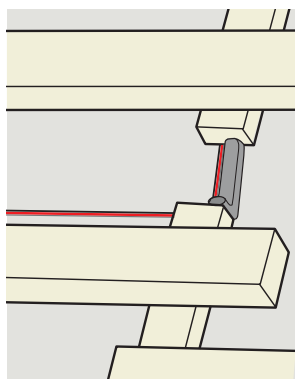
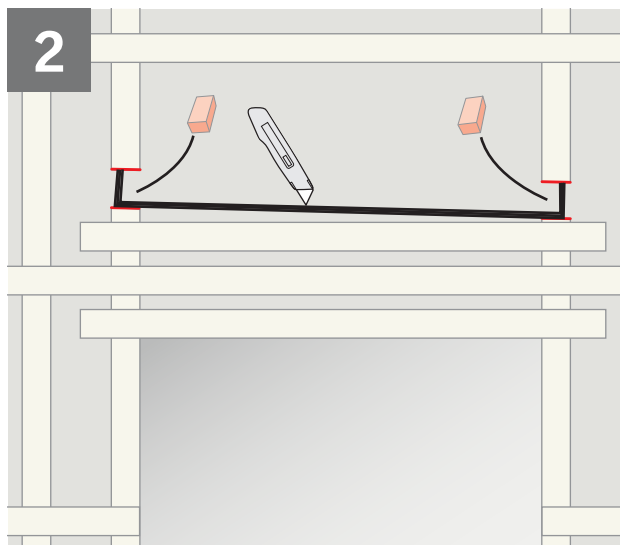
TWR
TWF

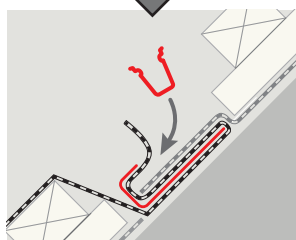
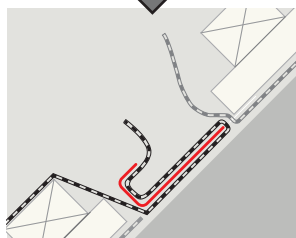
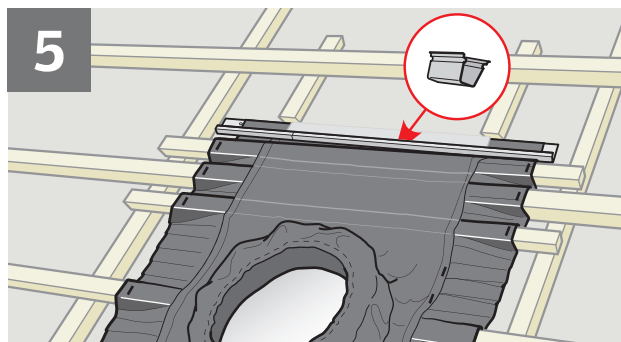
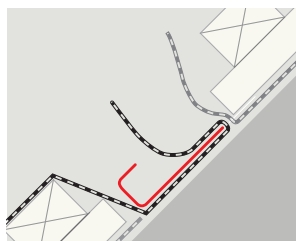
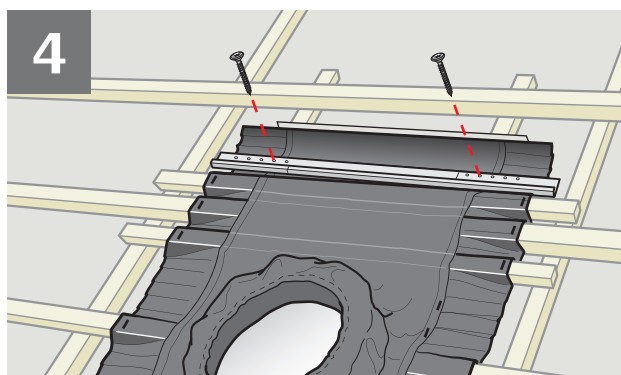
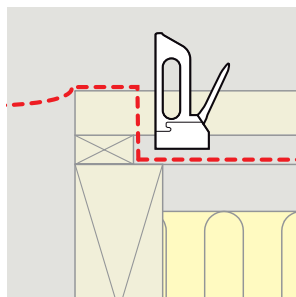
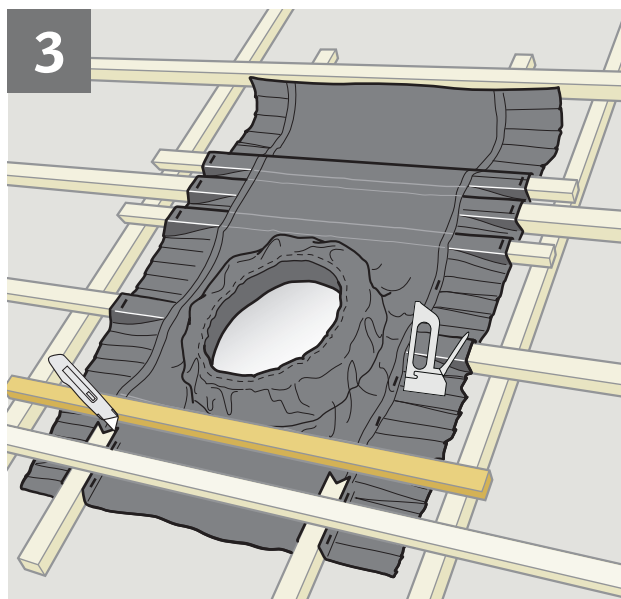


1

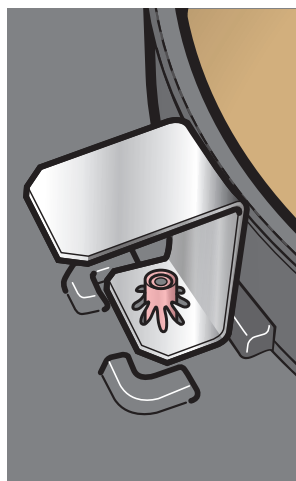
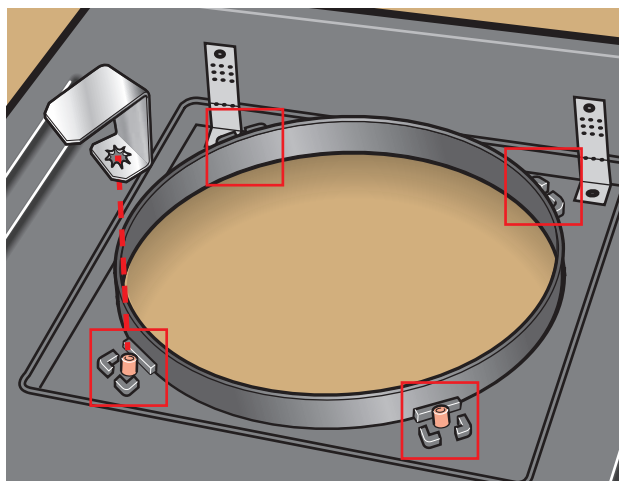
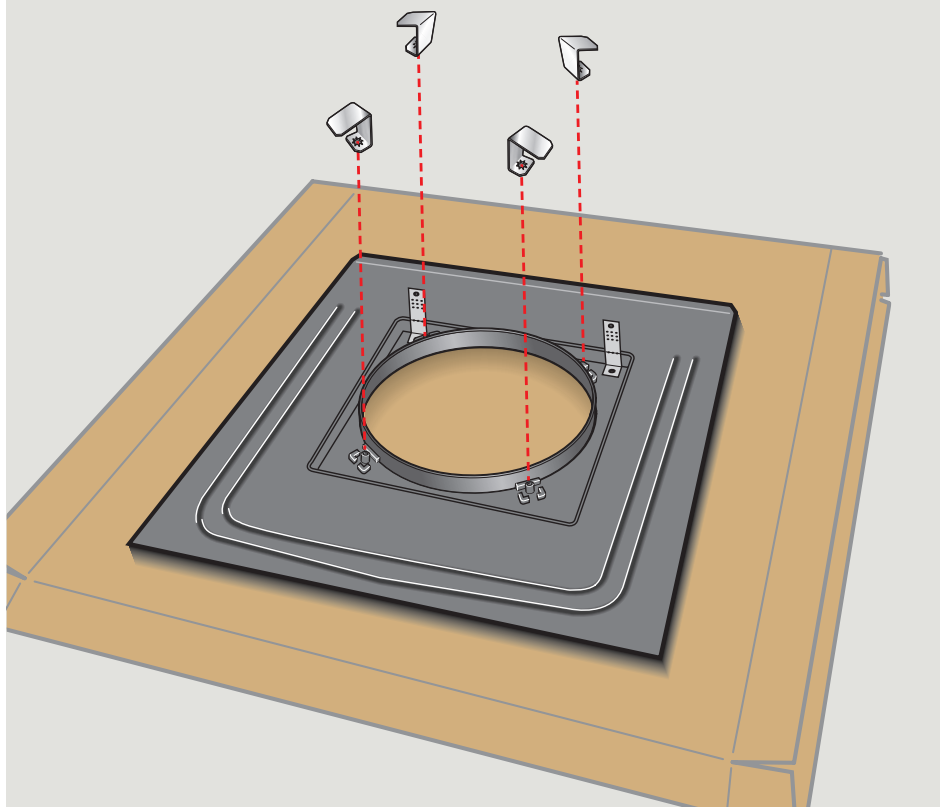


2

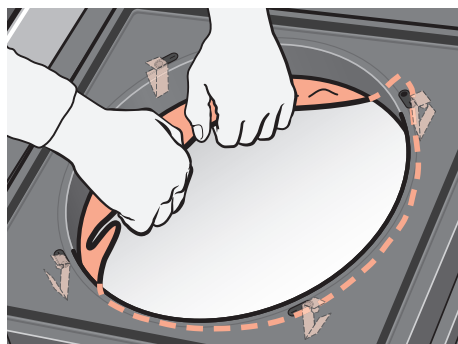
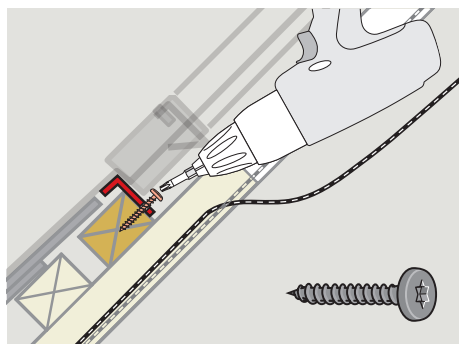
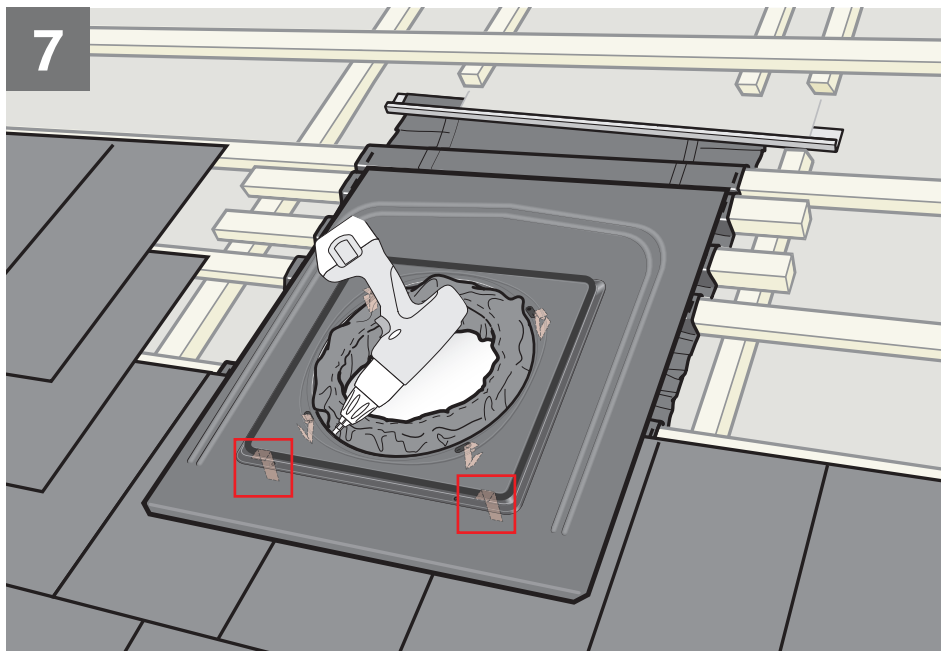




6

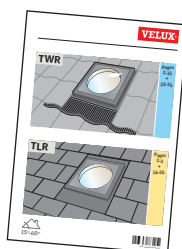




7



8

TLR
TLF



| | |
|---|-------------|
|   | |
| EN 13859-1:2014 Notified body: 0338 | |
| BFX | |
| Flexible sheet for underlays for roofs | |
| Reaction to fire: | Class E |
| Resistance to water penetration: | |
| - before artificial ageing: | Class W1 |
| - after artificial ageing: | Class W1 |
| Tensile strength in longitudinal direction: | |
| - before artificial ageing: | 200 N/50 mm |
| - after artificial ageing: | 120 N/50 mm |
| Tensile strength in transverse direction: | |
| - before artificial ageing: | 200 N/50 mm |
| - after artificial ageing: | 120 N/50 mm |
| Elongation in longitudinal direction: | |
| - before artificial ageing: | NPD |
| - after artificial ageing: | NPD |
| Elongation in transverse direction: | |
| - before artificial ageing: | NPD |
| - after artificial ageing: | NPD |
| Tear resistance: | |
| - longitudinal direction: | NPD |
| - transverse direction: | NPD |
| Flexibility at low temperature (pliability): | NPD |
| Artificial ageing behavior, concerning: | |
| - resistance to water penetration: | NPD |
| - tensile strength: | NPD |
| VELUX A/S Ådalsvej 99 DK-2970 Hørsholm www.velux.com/ce | |



www.velux.com

