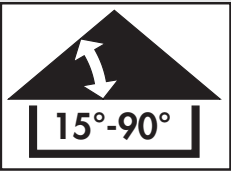


# EDW 2000

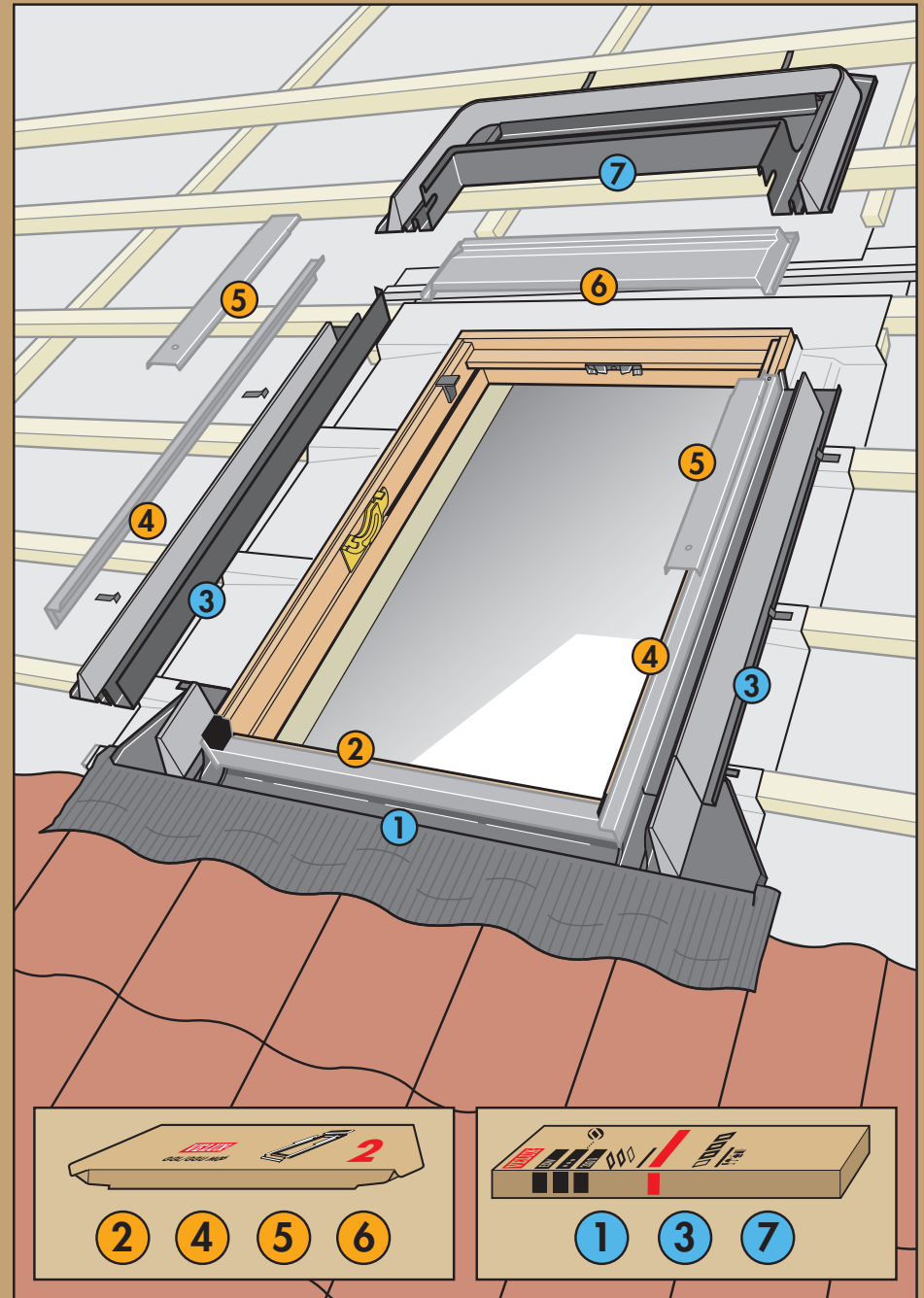
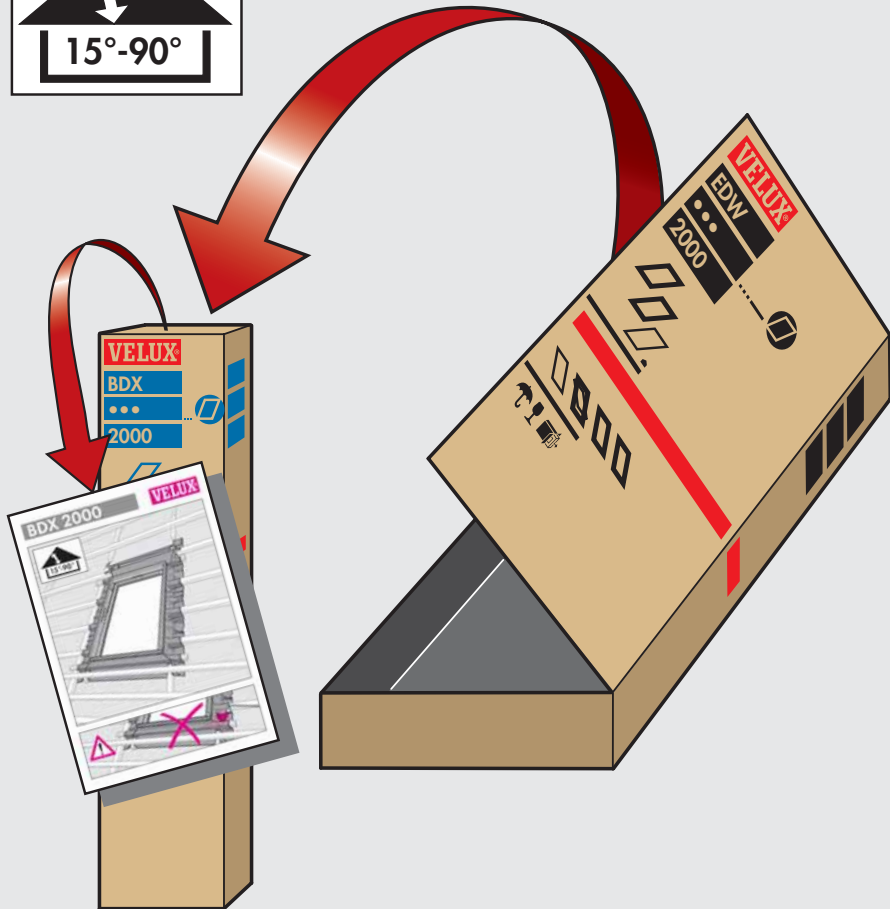
# VELUX®

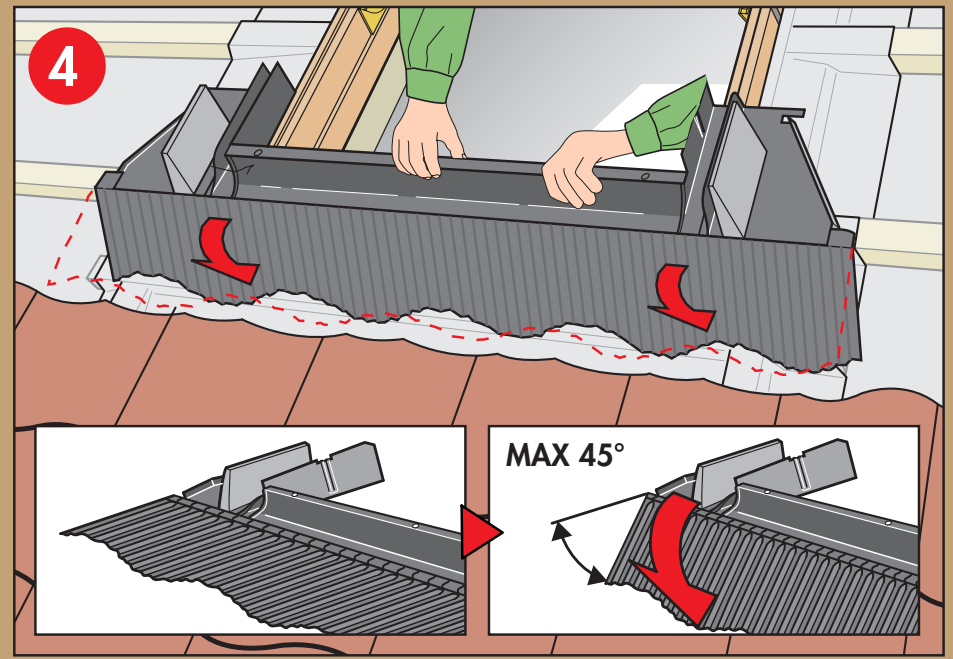
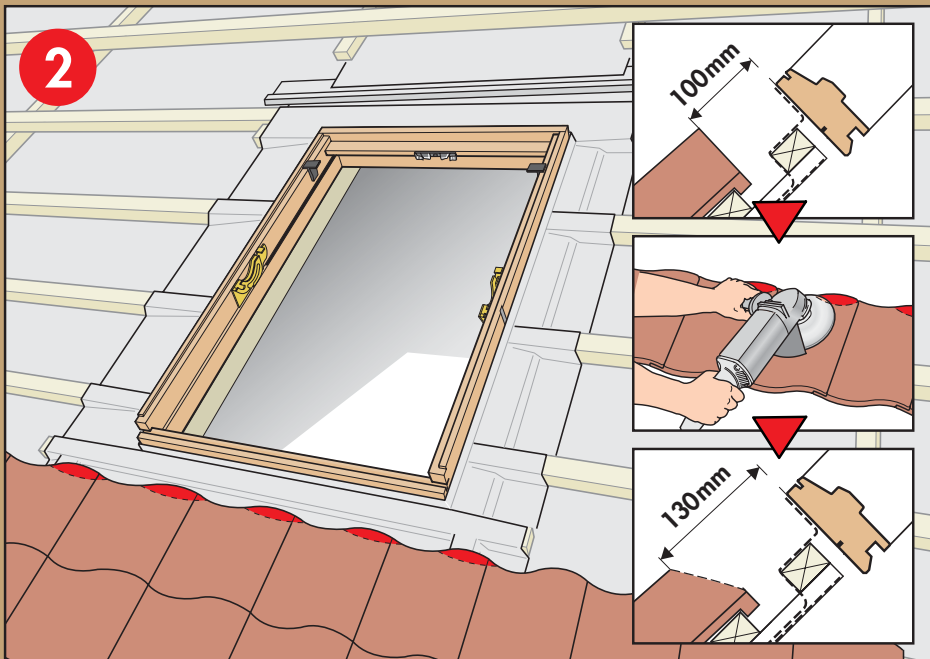
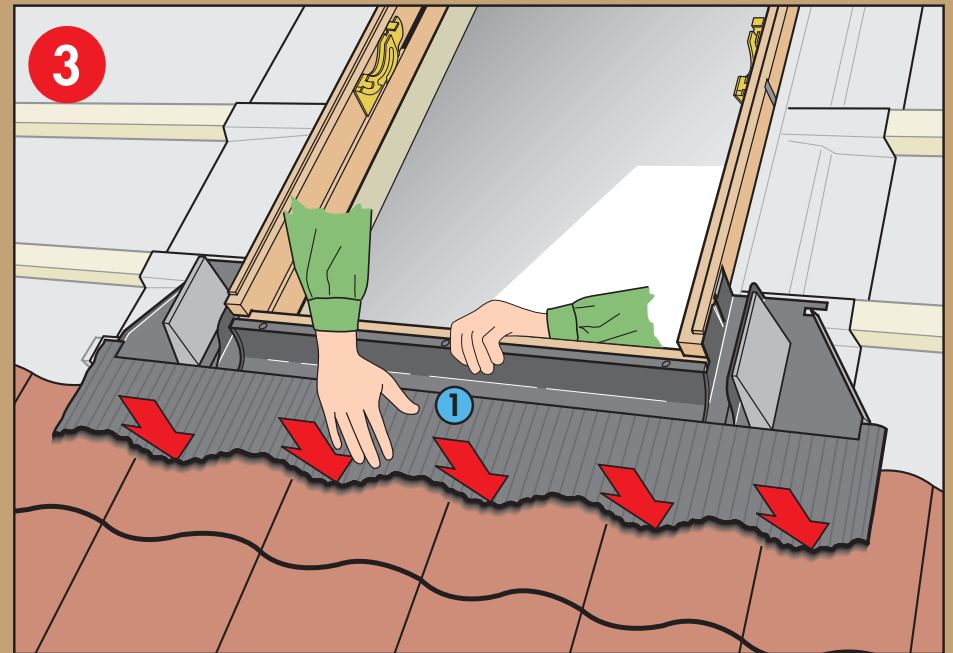
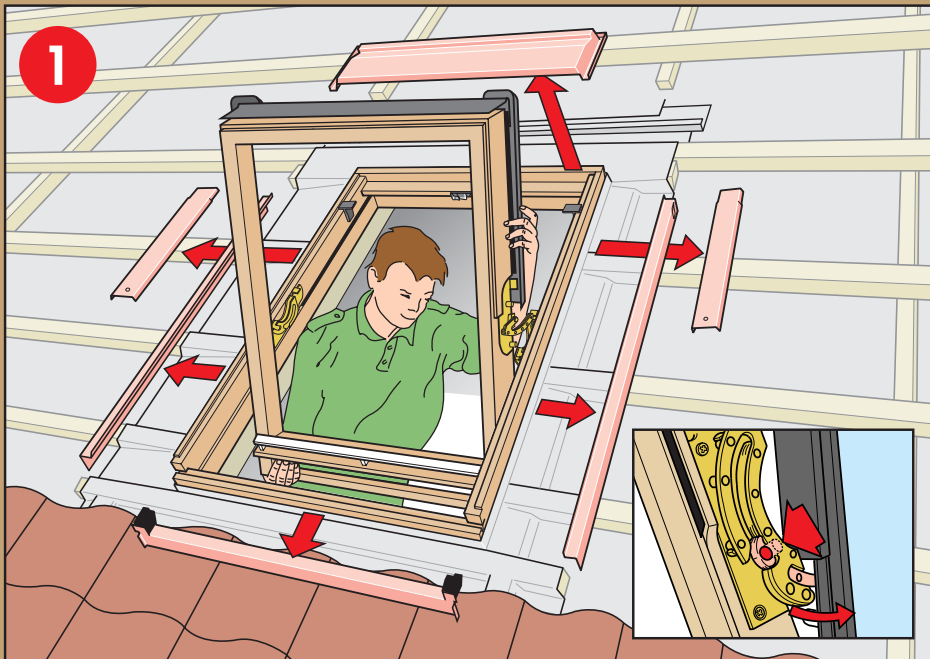


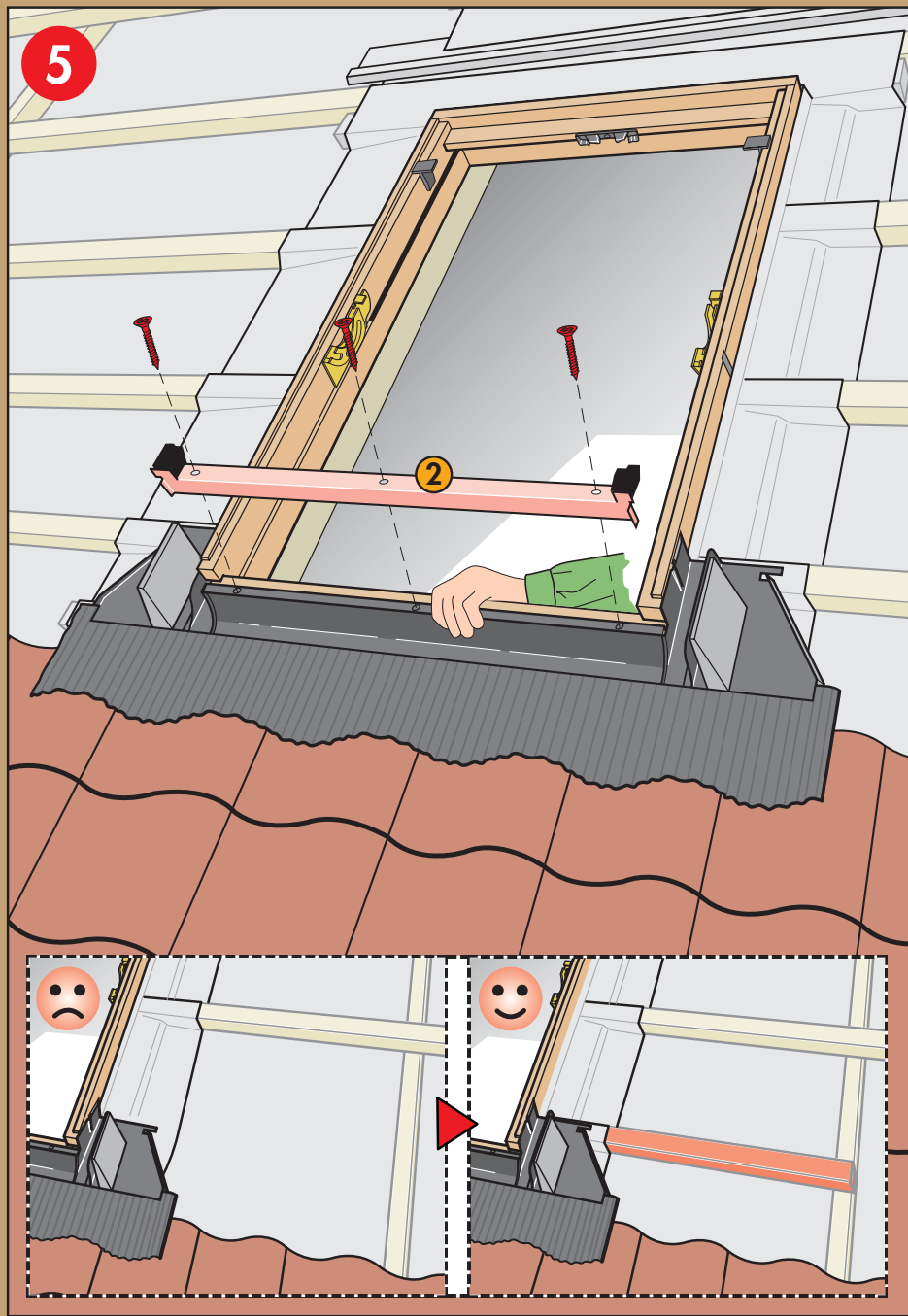
Max 120 mm



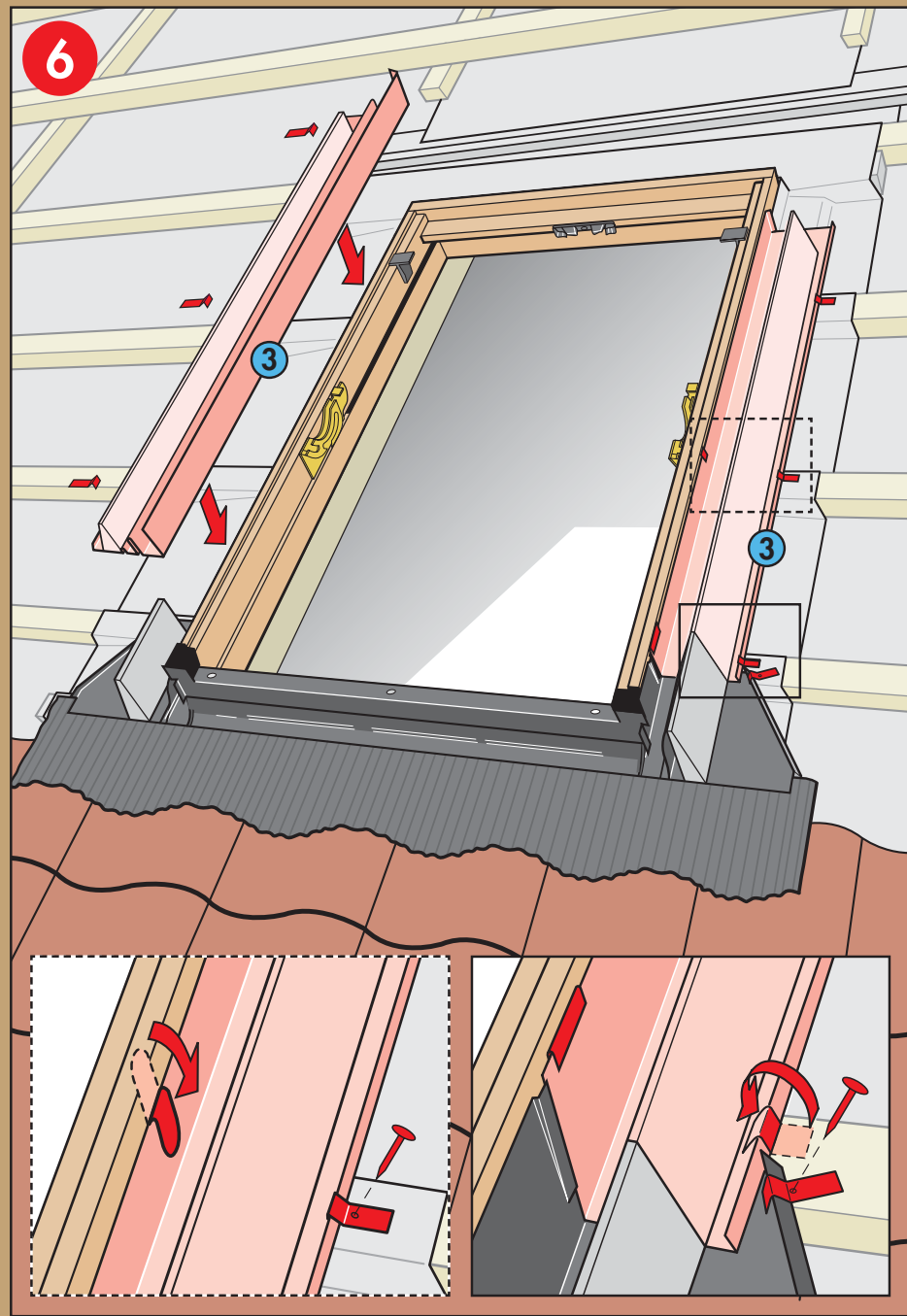
15°-90°



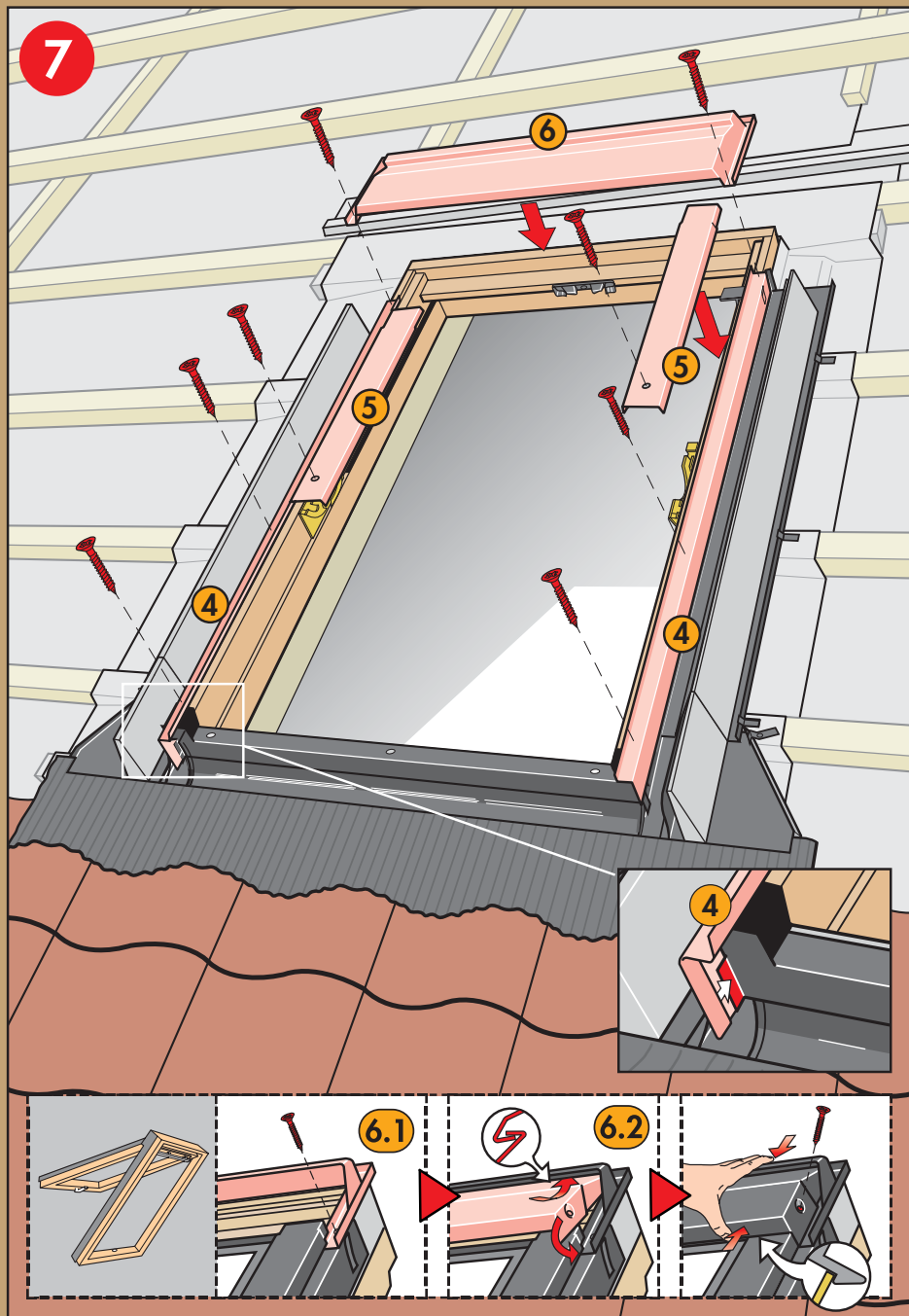




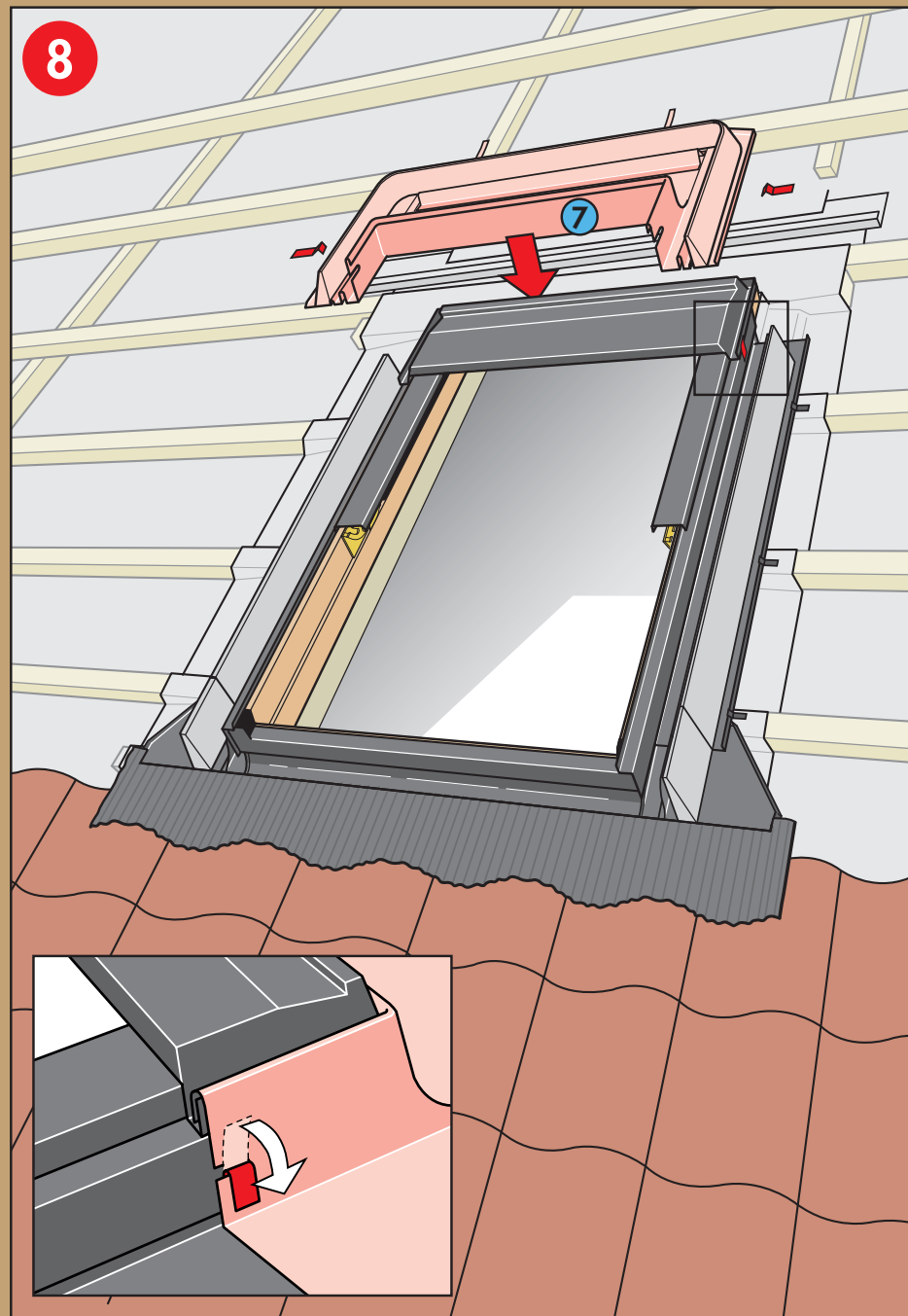
5



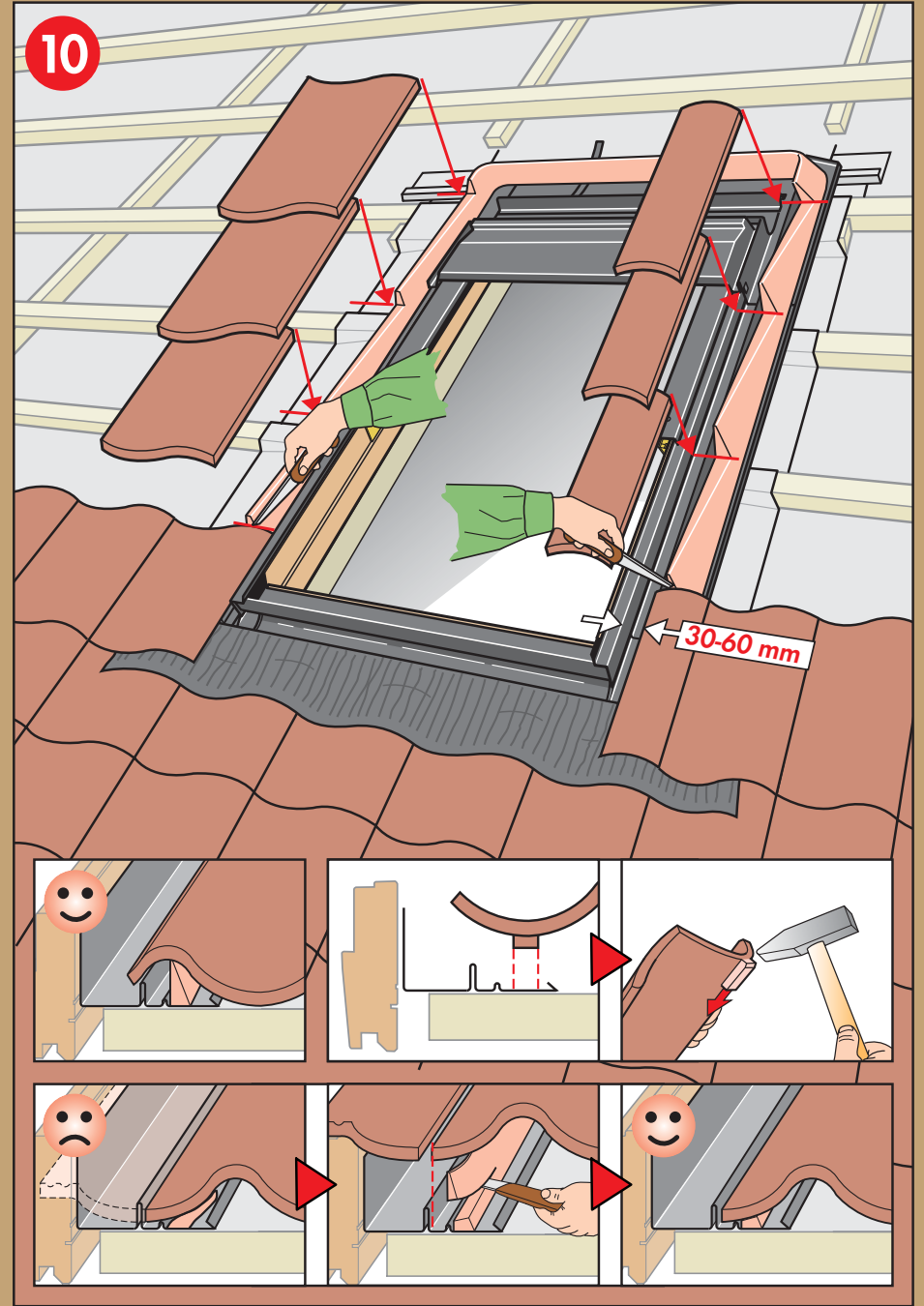
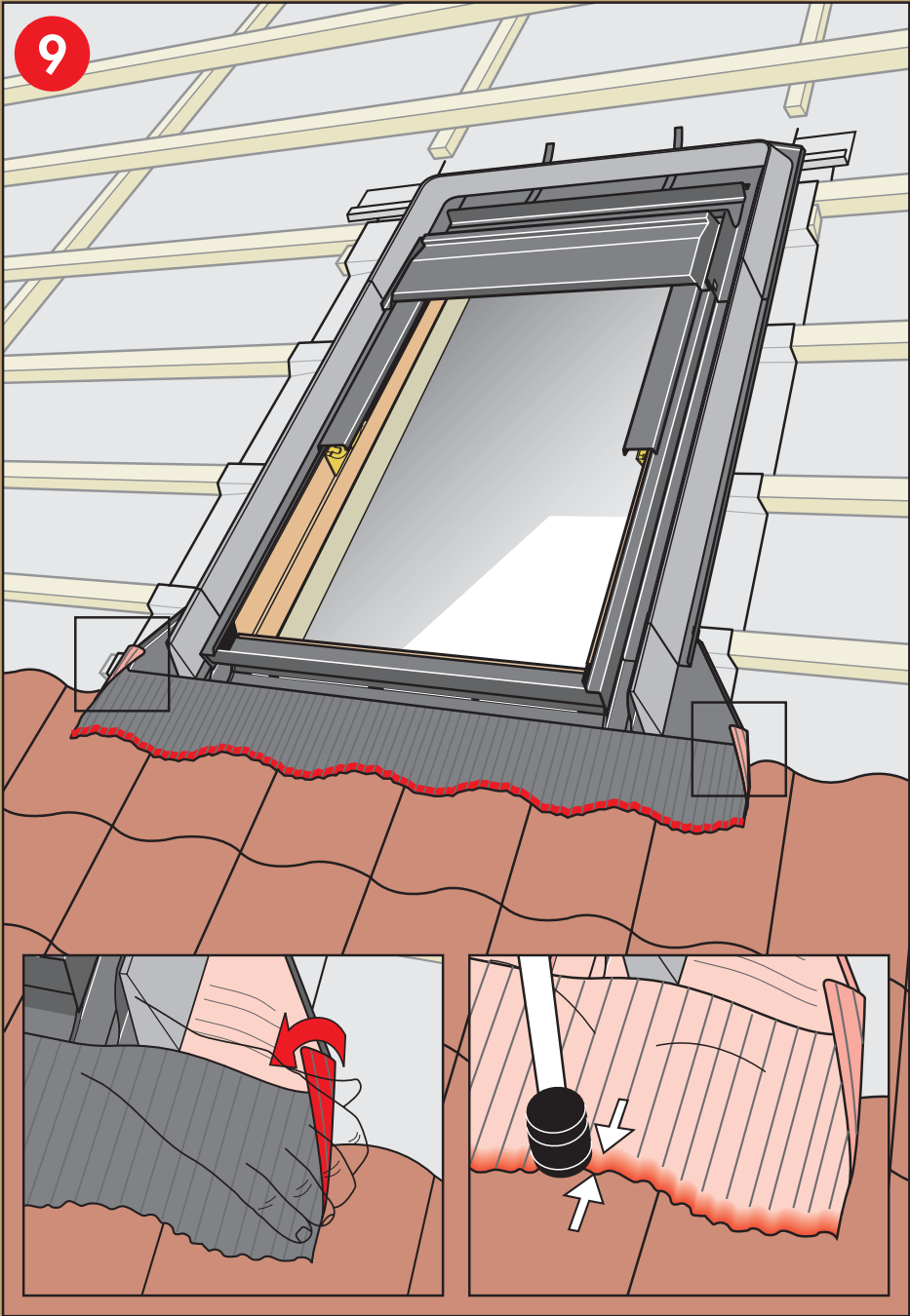
6

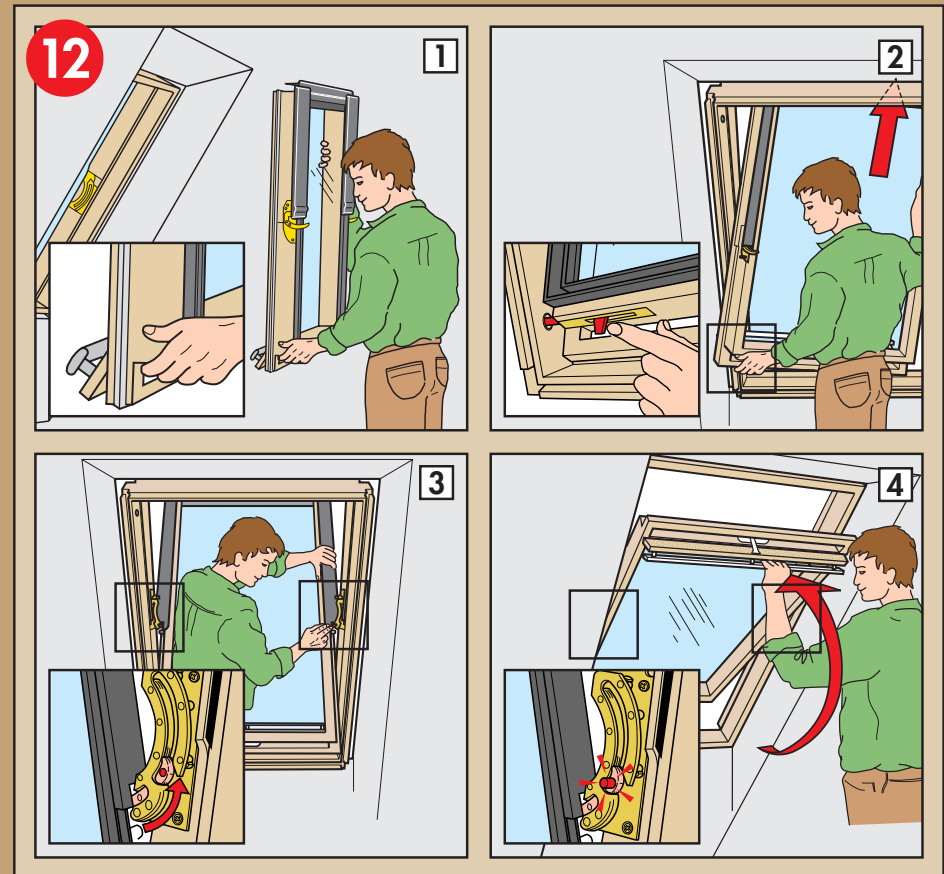
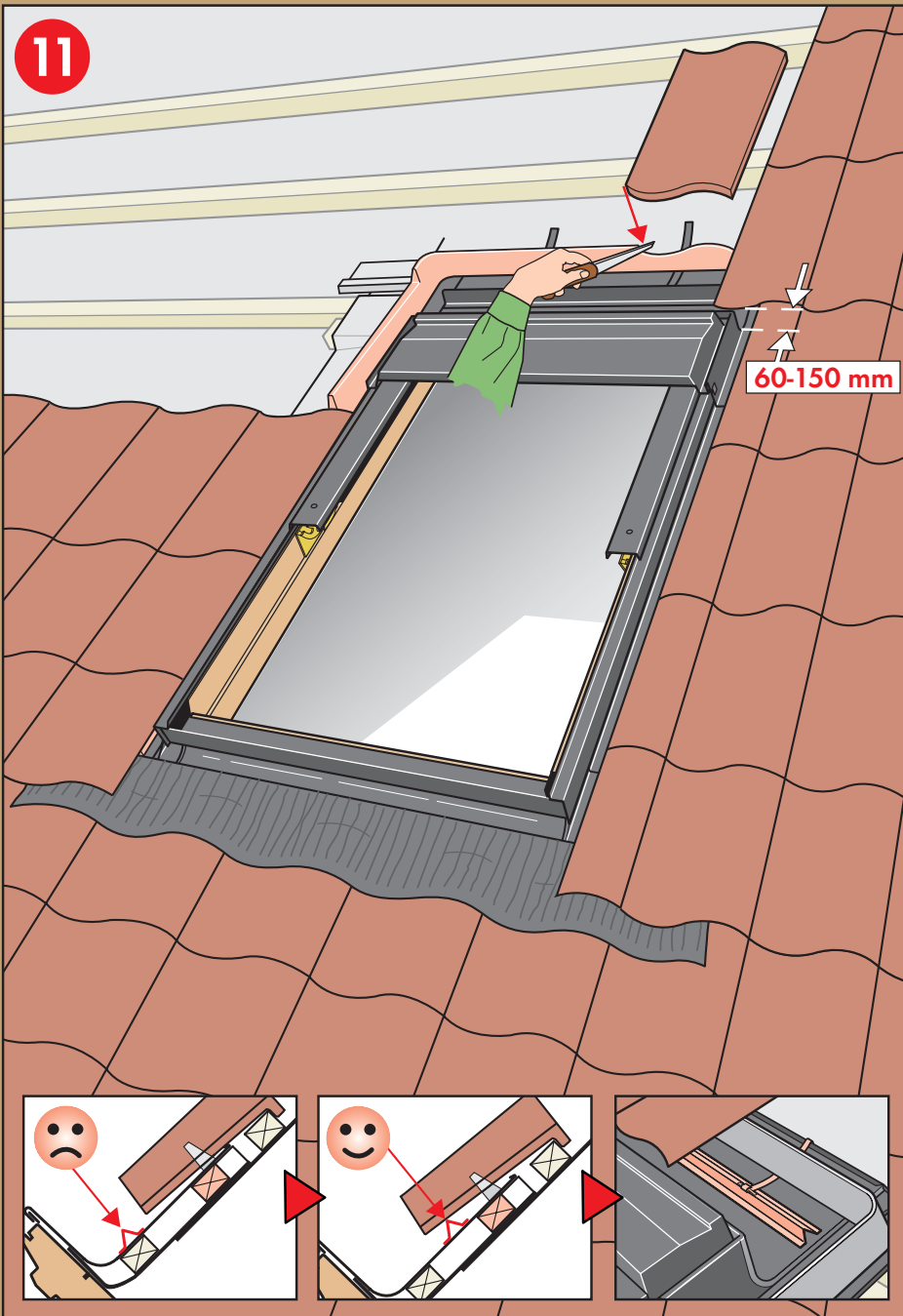


7



8





A: VELUX Österreich GmbH ☎ 02245/32 3 50	DK: VELUX Danmark A/S ☎ 45 16 45 16	J: VELUX-Japan Ltd. ☎ 03[3478]81 41	RO: VELUX România S.R.L. ☎ 0.9008-83589
AUS: VELUX Australia Pty. Ltd. ☎ [02] 9550 3288	E: VELUX Spain, S.A. ☎ 902 400 484	IT: VELUX Lietuva, UAB ☎ [85] 270 91 01	RUS: VELUX Rossia ZAO ☎ [095] 737 75 20
B: VELUX Belgium ☎ [010] 42.09.09	EST: VELUX Eesti OÜ ☎ [0] 601 1046	LV: VELUX Latvia SIA ☎ 7 27 77 33	S: VELUX Svenska AB ☎ 042/144450
BG: VELUX Bulgaria EOOD ☎ 02/955 99 30	F: VELUX France ☎ 0821 02 15 15 0,119€ TTC/min	N: VELUX Norge AS ☎ 22 51 06 00	SK: VELUX Slovensko, s.r.o. ☎ [02] 60 20 15 00
BiH: VELUX Bosna i Hercegovina d.o.o. ☎ 033/626 493, 626 494	FIN: VELUX Suomi Oy ☎ 09-887 0520	NL: VELUX Nederland B.V. ☎ 030 - 6 629 629	SLO: VELUX Slovenija d.o.o. ☎ 01 564 14 84
BY: VELUX Roof Windows ☎ [017] 217 7385	GB: VELUX Company Ltd. ☎ 0870 380 9593	NZ: VELUX New Zealand Ltd. ☎ 09-6344 126	TR: VELUX Çati Pencereleeri Ticaret Limited Şirketi ☎ 0 216 302 54 10
CDN: VELUX Canada Inc. ☎ 1 800 88-VELUX [888-3589]	H: VELUX Magyarország Kft. ☎ [06/1] 436-0530	P: VELUX A/S -Sucursal em Portugal ☎ 21 847 94 01	UA: VELUX Ukraina TOV ☎ 1-800-88-VELUX
CH: VELUX Schweiz AG ☎ 062/289 44 44	HR: VELUX Hrvatska d.o.o. ☎ 01/6221 212	PL: VELUX-POLSKA Sp. z o.o. ☎ [022] 33 77 000 / 33 77 070	USA: VELUX America Inc. ☎ 1-800-88-VELUX
CHN: VELUX [CHINA] CO. LTD. ☎ 0316-607 27 27	I: VELUX Italia s.p.a. ☎ 045/6173666	RA: VELUX Argentina S.A. ☎ 0 114 711 5666	YU: VELUX Jugoslavija d.o.o. ☎ 011 3670 468
CZ: VELUX Česká republika, s.r.o. ☎ 531 015 511	IRL: VELUX Company Ltd. ☎ [01] 848 8775	RCH: VELUX Chile Limitada ☎ 2-231 18 24	
D: VELUX Deutschland GmbH ☎ 0180-333 33 99			

[www.VELUX.com](http://www.VELUX.com)

Installation instructions for flashing type EDW 2000. Order no. VAS 451.449.0904