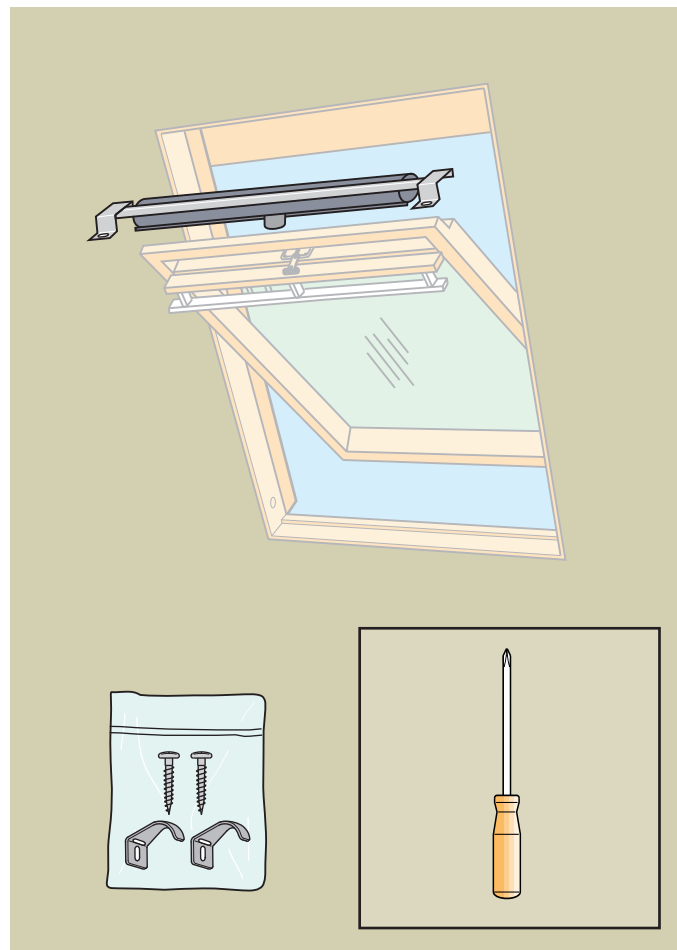
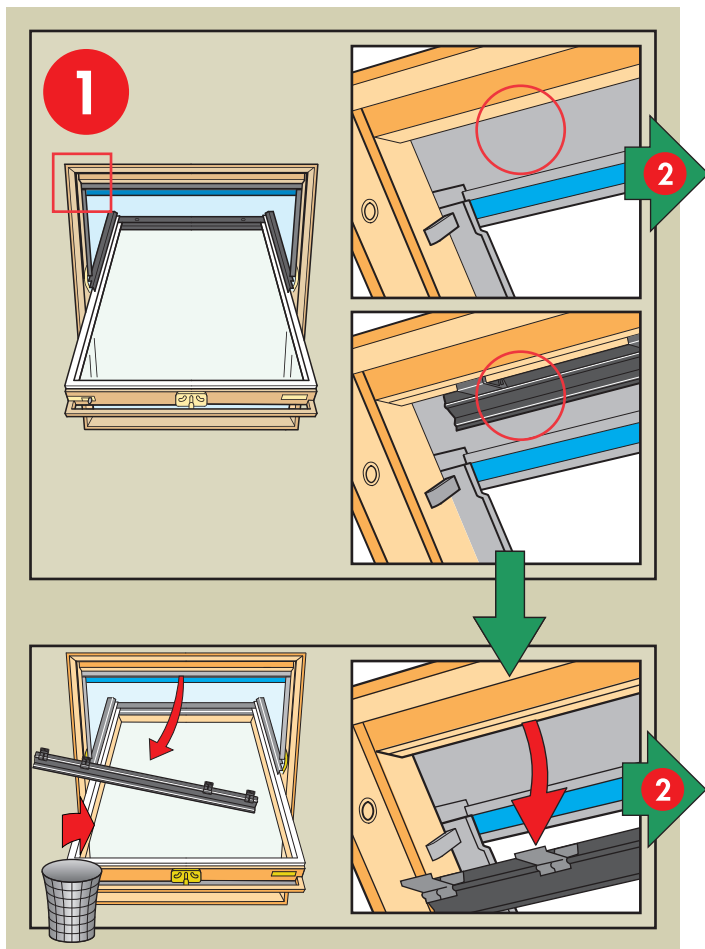


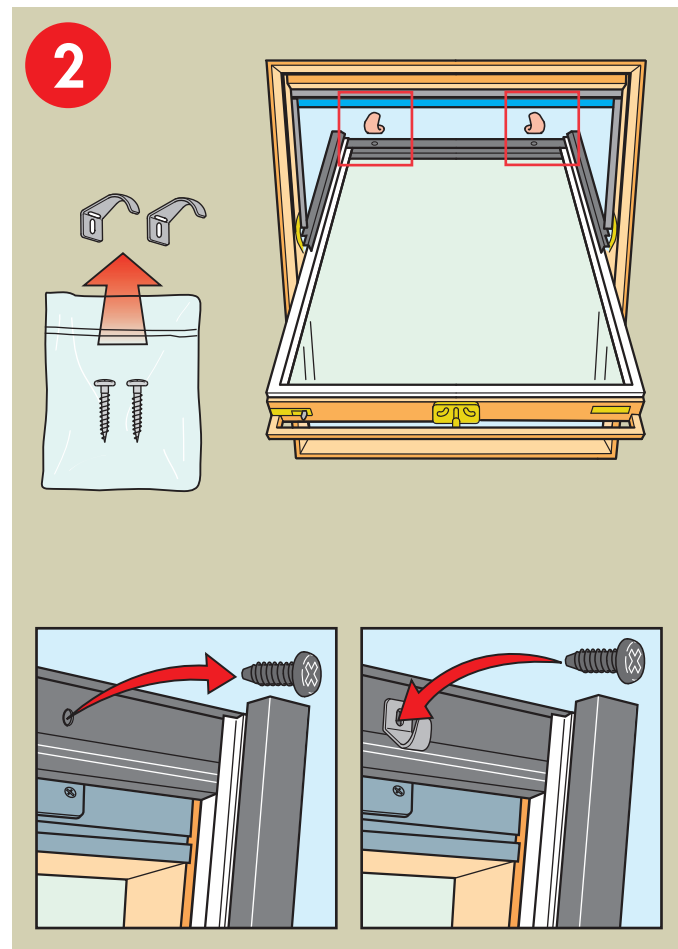
# MHL/MH



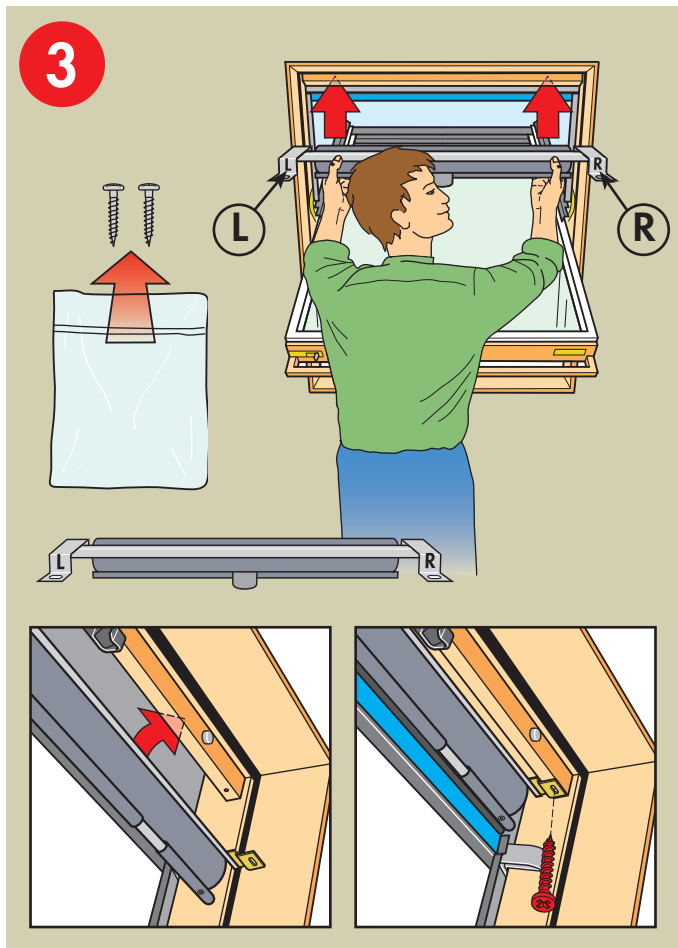
450789



5



6



Cloth • Stoff • Toile • Dug • Kleur • Tessuto • Tejido

5060

6060

6070

6080

1

1

1

1

Wind class • Windklasse • Classe de résistance au vent  
Vindklasse • Windklasse • Classe resistente al vento  
Clasificación de resistencia al viento

AR:	VELUX Argentina S.A. ☎ 0 114 711 5666	IE:	VELUX Company Ltd. ☎ 1800 409 750
AT:	VELUX Österreich GmbH ☎ 02245/32 3 50	IT:	VELUX Italia s.p.a. ☎ 045/6173666
AU:	VELUX Australia Pty. Ltd. ☎ (02) 9550 3288	JP:	VELUX-Japan Ltd. ☎ 0570-00-8145
BA:	VELUX Bosna i Hercegovina d.o.o. ☎ 033/626 493, 626 494	LT:	VELUX Lietuva, UAB ☎ (85) 270 91 01
BE:	VELUX Belgium ☎ (010) 42.09.09	LV:	VELUX Latvia SIA ☎ 67 27 77 33
BG:	VELUX Bulgaria EOOD ☎ 02/955 95 26	NL:	VELUX Nederland B.V. ☎ 030 - 6 629 629
BY:	VELUX Roof Windows FE ☎ (017) 217 7385	NO:	VELUX Norge AS ☎ 22 51 06 00
CA:	VELUX Canada Inc. ☎ 1 800 88-VELUX (888-3589)	NZ:	VELUX New Zealand Ltd. ☎ 09-6344 126
CH:	VELUX Schweiz AG ☎ 0848 945 549	PL:	VELUX Polska Sp. z o.o. ☎ (022) 33 77 000 / 33 77 070
CL:	VELUX Chile Limitada ☎ 2-231 18 24	PT:	VELUX Portugal, Lda ☎ 21 880 00 60
CN:	VELUX (CHINA) CO. LTD. ☎ 0316-607 27 27	RO:	VELUX România S.R.L. ☎ 0-8008-83589
CZ:	VELUX Česká republika, s.r.o. ☎ 531 015 511	RS:	Srbija d.o.o. ☎ 011 3670 468
DE:	VELUX Deutschland GmbH ☎ 0180-333 33 99	RU:	VELUX Russia ZAO ☎ (495) 737 75 20
DK:	VELUX Danmark A/S ☎ 45 16 45 16	SE:	VELUX Svenska AB ☎ 042/20 83 80
EE:	VELUX Eesti OÜ ☎ 621 7790	SI:	VELUX Slovenija d.o.o. ☎ 01 724 68 68
ES:	VELUX Spain, S.A. ☎ 91 509 71 00	SK:	VELUX Slovensko, s.r.o. ☎ (02) 33 000 555
FI:	VELUX Suomi Oy ☎ 09-887 0520	TR:	VELUX Çatı PencereLeri Ticaret Limited Şirketi ☎ 0 216 302 54 10
FR:	VELUX France ☎ 0821 02 15 15 0,119€ TTC/min	UA:	VELUX Ukraina TOV ☎ (044) 490 5703
GB:	VELUX Company Ltd. ☎ 0870 380 9593	US:	VELUX America Inc. ☎ 1-800-88-VELUX
HR:	VELUX Hrvatska d.o.o. ☎ 01/5555 444		
HU:	VELUX Magyarország Kft. ☎ (06/1) 436-0601		

[www.VELUX.com](http://www.VELUX.com)

Installation instructions for MHL/MH. Order no. VAS 450789-1207