

# Staircase 24V SHEV-set

**VELUX®**
**Commercial**


For fire prevention and daily ventilation

## Staircase 24V SHEV-set

### Connection possibilities and reports

#### SHEV activation via

- SHEV switch
- alternative smoke detector/heat detector
- fire alarm system (BMA)

#### Ventilation function via

- ventilation switch
- connection of wind/rain sensor possible
- temperature dependent ventilation possible

#### Reports

- SHEV activation and collective fault indication, optical and acoustical via SHEV switch
- SHEV activation and fault indication for network, battery, motor circuit, smoke detector circuit and SHEV switch circuit, optical in the central

#### Options

- potential-free SHEV and fault notification
- potential-free relaying of a wind/rain release
- time-dependent closing of the ventilation function (0–30 min)

### Basic configuration staircase 24V SHEV-set for dome rooflights



*SHEV motor control central including accumulators for backup power supply*



*SHEV spindle motor opener including console*



*SHEV DIN main release switch*



*SHEV DIN secondary switch*

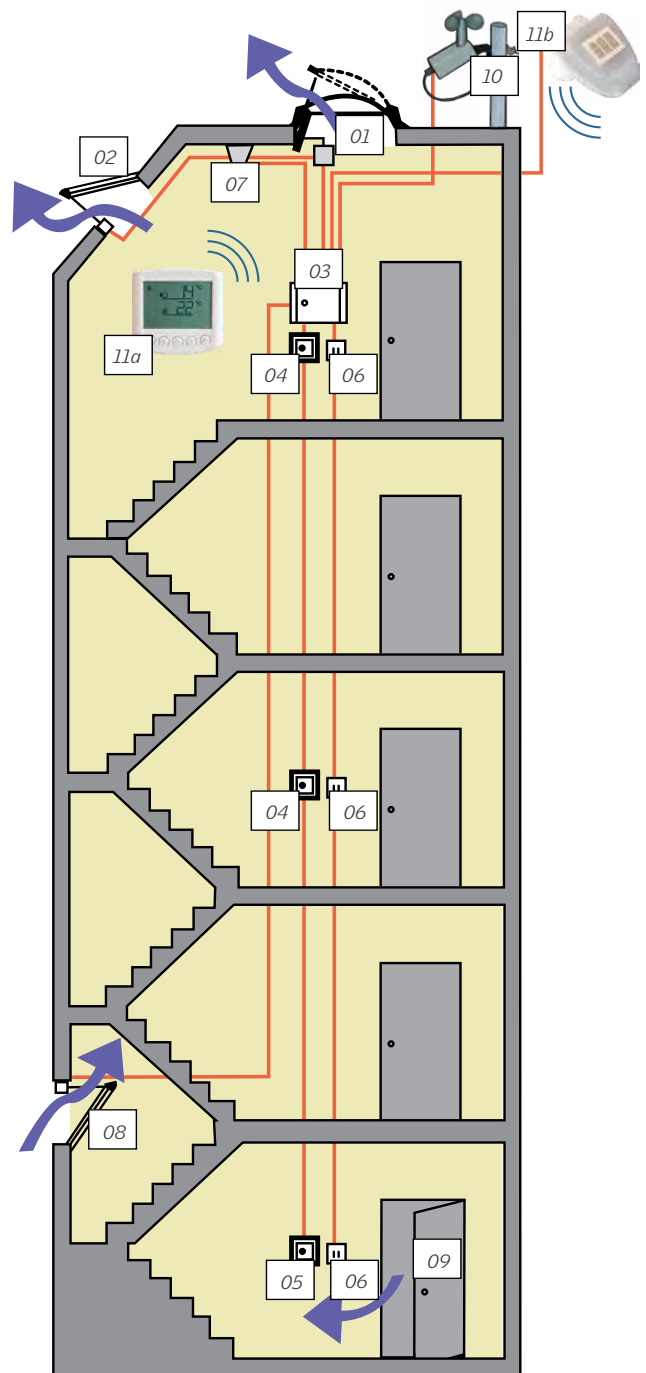


*Ventilation rotary switch (upon/under plaster)*

*Colour:  
orange; more colours available*

## Staircase 24V SHEV-set

- 01. dome rooflight, openable with  
SHEV motor opener 24V (spindle drive)
- 02. alternative to 01:  
SHEV motor opener 24V (chain drive)
- 03. SHEV motor central 24V
- 04. SHEV DIN secondary switch
- 05. SHEV DIN main release switch
- 06. ventilation rotary switch
- 07. smoke detector
- 08. Air intake opening: casement with chain drive 24V
- 09. alternative to 08:  
door with locking device as "manual air intake"
- 10. wind/rain sensor
- 11. alternative to 10:  
SMARTCONTROL AIR 24V consisting of:
  - 11a. control unit  
and
  - 11b. weather station



Valid from date of publication until new edition. Version: June 2023. Not responsible for printing errors, mistakes and technical alterations.