

# VELUX electric glass rooflight CVU

VELUX®

Glazing 20, double-glazed



Transform your home by bringing the magic of daylight and fresh air into areas where you never thought possible with the new generation of VELUX glass rooflights. The base unit of the electrically vented glass rooflight has a unique design with a slim frame and invisible sash providing maximum daylight and a beautiful design from inside the home. This vented base unit comes with 2-layer glazing, but is also available with 3-layer glazing, and has excellent energy performance as well as sound reduction capabilities in case of rain, hail or traffic. It delivers fresh air at the touch of a button and has a pre-installed rain sensor that conveniently closes the window automatically in the event of rain, thus providing full peace of mind. It can even be operated via a smart phone, using the VELUX App Control. A both beautiful and convenient solution for your home.

- Minimal visible rooflight frame contributes to glass-to-edge view to the sky and to letting in maximum daylight.
- Enjoy maximum daylight and a stylish design from inside the home, as blinds or awnings are discretely placed in the rooflight.
- External electric power supply unit KUX 110 is included in the CVU electrically vented rooflight box. To open and close your rooflight at the touch of a button, use the simple wall switch, which is pre-paired to work with your rooflight right out of the box.
- The motor is hidden from view in the rooflight frame for a sleek appearance and unobstructed view to the sky.
- Enjoy a quieter indoor environment and very good thermal insulation from our energy-efficient two-layer insulating glass unit
- The electrically vented glass rooflight lets you easily air your room at the touch of a button.
- Integrated rain sensor automatically closes the window in the event of rain.
- The loose installation triangle gives you more flexibility during installation and supports installation of the rooflight in different roofing materials and uneven roof surfaces.

**CE**

## Available sizes and daylight area

---

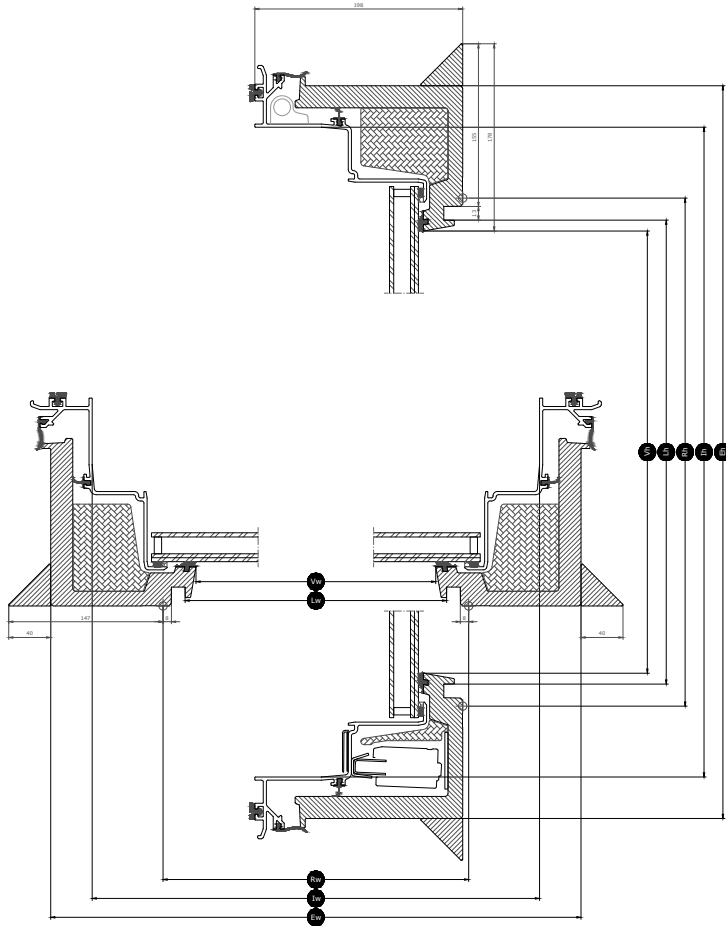
	1200
1200	CVU 120120 (1.3)

All measurements are in mm. ( ) = Effective daylight area, m<sup>2</sup> [ ] = Geometric free area, m<sup>2</sup>

\*A=large sizes with glazing variant -A

# Cross section dimensions

Please note that the view of the cross section is from bottom to top



Width		120
Vw	Visible glazing width	1138.2
Lw	Inside groove measure width	1159
Rw	Roof opening	1200
Iw	Inside sash measure width	1228
Ew	Exterior frame width	1415

Height		120
Vh	Visible glazing height	1138.2
Lh	Inside groove measure height	1159
Rh	Roof opening	1200
Ih	Inside sash measure height	1228
Eh	Exterior frame height	1415

## Technical values

Overview of technical values for the product, covering among other, CE marking in accordance with EN 1873 or EAD 200062-00-0401.

Window characteristics	CVU 20Q + ISU 1093	CVU 20Q + ISU 2093
Air permeability, [class]	4	4
Thermal transmittance $U_{rc,ref300}$ (CE-marked) (U-value)	0.65	0.75
Arc, ref300 (U-value transmission area)	4.4	4.1
Light transmittance ( $\tau_v$ ) ( $\tau$ )	0.69	0.68
Sound insulation ( $R_w$ ) $R_{w,dB}$ [dB]	39	39
Total solar energy transmittance (g-value) (g)	0.52	0.52
Ultraviolet transmittance ( $\tau_{uv}$ ) ( $\tau_{uv}$ )	0.05	0.05
Burglar resistance window [class]	RC2	RC2
Frame factor	0.1	0.1
Air permeability, [class]	4	4
Reaction to fire [class]	C-s2, d2	C-s2, d2
Bonding of cover glass (glass of top unit) [class]	$\Delta X \geq 0.75$	$\Delta X \geq 0.75$
External fire performance - European [class]		
External fire performance - British [class]	NPD	NPD
Impact resistance [class]	3	3
Impact resistance large soft body [class]	N/A	N/A
Impact resistance small hard body [class]	N/A	N/A
Rain noise (Lia)	44 dB	44 dB
Resistance to downward loads	N/A	N/A
Resistance to fire [class]	NPD	NPD
Resistance to snow load	*	*
Resistance to upward load	N/A	N/A
Resistance to wind load [class]	C3	C3
Water tightness [class]	9A	9A

NPD: No Performance Determined

## Glazing structure

Glazing unit	Composition (from inside to outside)
Double-glazed	7.5 mm laminated float glass - 16 mm Argon - 4 mm toughened glass with enamel

## Blinds and awnings

---

Complete your VELUX glass rooflight with a blind for complete comfort. Choose between an anti-heat blind to maintain a cool room on hot days or a blackout blind to block outside light for total darkness. The blinds are discreetly placed and do not compromise daylight and design when not in use. You also have the option of adding an insect screen that lets you enjoy fresh air without any insects.

Use VELUX App Control or VELUX ACTIVE with NETATMO for smartphone control of your vented glass rooflight and blinds.

## Compatibility

---

The electrically vented base unit CVU is compatible with the flat glass top unit ISU 2093 and curved glass top-unit ISU 1093.

Installation accessories: Extension kerb ZCU 0015/1015, securing kit for roofing felt ZZZ 210U and lining LSF 2000.

Compatible with blinds: The solar-powered anti-heat blind MSU, the solar-powered blackout blind DSU and the manual insect screen ZIU.

## Further information

---

We reserve the right to make technical changes.

For more information on our products, please visit <https://velux.com>.