

GRILLODUR®

barrel vault rooflights

VELUX®
Commercial


For an optimal glare-free room illumination

GRILLODUR® barrel vault rooflights

- span distance up to 7 m
- homogeneous room illumination due to glare- and shadow-free light
- low tare weight (10 kg/m²)
- fast installation thanks to high degree of prefabrication
- flexible design thanks to different standard colours
- ideal for roof-refurbishment projects
- U-value of the glazing up to 0.8 W/m²K
- total energy transmission up to 21%
- sound insulation: R_w up to 36 dB
- permanent fall through proof according to GS-BAU-18
- highest chemical resistance
- snow load capacity up to 2,5 kN/m² (higher loads on request)
- shatter-resistance test according to ASTM D 3841-82, point 7.10
- qualified smoke and heat extraction can be integrated with single and double flaps, tested according to DIN EN 12101-2

The barrel vault rooflight made of GRILLODUR® is a self-supporting, bowed construction consists of an aluminium grid frame system, onto which two semi-transparent fibreglass sheets are placed on both sides.

The low tare weight of approximately 10 kg/m² is ideally suited for renovating the roof to raise the heat insulation value without further static loading of the subconstruction.

For the highest demands in regard to heat, noise, sun and fire protection, combined with glare-free daylight, outstanding mechanical specifications and high chemical resistance for industrial, administrative and municipal applications.



Barrel vault rooflight with SHEV-double flaps and wind baffles

Technical data GRILLODUR® barrel vault rooflights

Nominal width	B mm	1,000–3,000	3,001–4,500	4,501–7,000 ¹⁾
Thickness of element	D mm	40 and 70	40 and 70	70
Norm element dimension between axes	E mm	2,000		
Rise (without angled profile)	S mm	381–636	637–1,029	1,030–1,700
Profile design	closed profiles/open profiles			

Note:

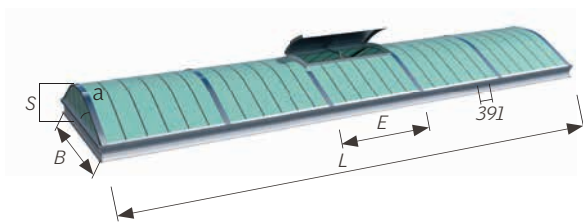
1) Depending on load case additional support is required.

The GRILLODUR® elements are manufactured from high-quality aluminium profiles on a 391 mm grid. The rise varies between 381 mm and 1,700 mm. The single unit has a maximum width of 2,000 mm. Our barrel vault rooflights are available in 40 or 70 mm element thicknesses, taking into account static and thermal requirements.

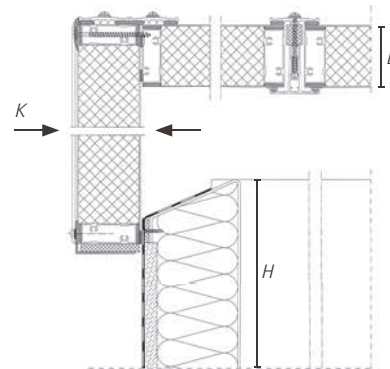
Our patented system can easily realize unsupported lengths for continuous rooflights from 1 up to 7 m. Larger widths available upon request.



GRILLODUR® barrel vault rooflight

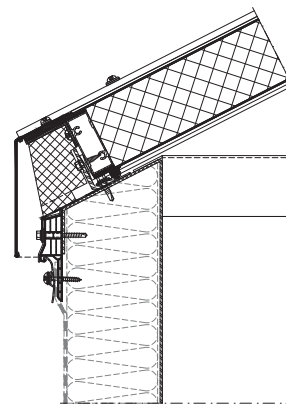


Schematic diagram GRILLODUR® arched



Gable connection with steel kerb

- a Angle of slope 27°
- B Nominal width
- D Thickness of element
- E Norm element dimension between axes
- L Nominal length
- S Rise



Steel kerb connection on long side