

English	Setup of wall switch KLI 312 to operate VELUX INTEGRA® solar powered blinds DSL/RSL/FSL/FSC	2
Deutsch	Coming soon	
Français	Coming soon	
Dansk	Coming soon	
Nederlands	Coming soon	
Italiano	Coming soon	
Español	Coming soon	
Bosanski	Coming soon	
Български	Coming soon	
Česky	Coming soon	
Eesti	Coming soon	
Hrvatski	Coming soon	
Latviski	Coming soon	
Lietuvių	Coming soon	
Magyar	Coming soon	
Norsk	Coming soon	
Polski	Coming soon	
Português	Coming soon	
Română	Coming soon	
Русский	Coming soon	
Slovenščina	Coming soon	
Slovensky	Coming soon	
Srpski	Coming soon	
Suomi	Coming soon	
Svenska	Coming soon	
Türkçe	Coming soon	
Українська	Coming soon	

Setup of wall switch KLI 312 to operate VELUX INTEGRA® solar powered blinds DSL/RSL/FSL/FSC

VELUX®

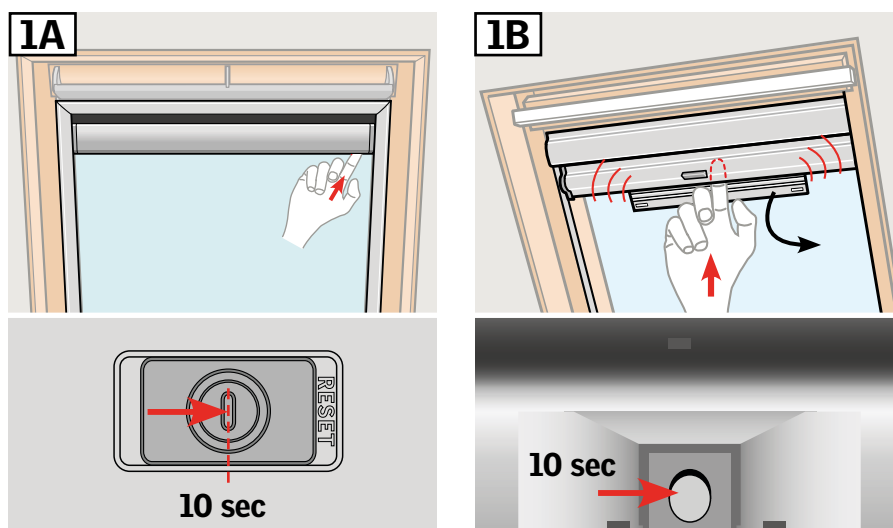
If a non-functional wall switch must be replaced or if the wall switch cannot find certain products, the products can be prepared for registration by resetting them manually.

Note: Reset products cannot be operated until they have been registered in the wall switch again.

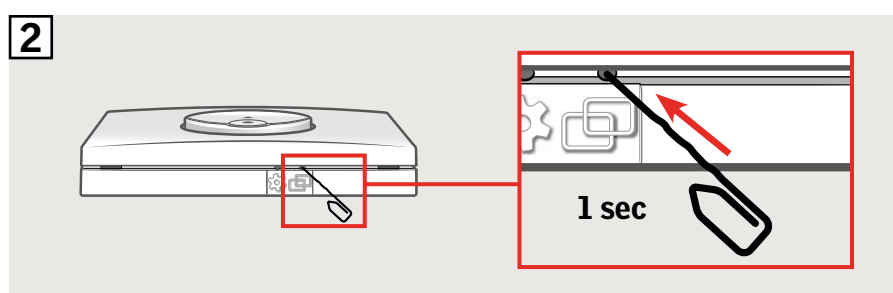
Important: This only applies to KLI 312.

- 1 Depending on the blind, the RESET button will be located as shown in illustration 1A or 1B.
Press the RESET button on the blind for 10 seconds (motor makes a brief buzzing noise, but the product does not move).

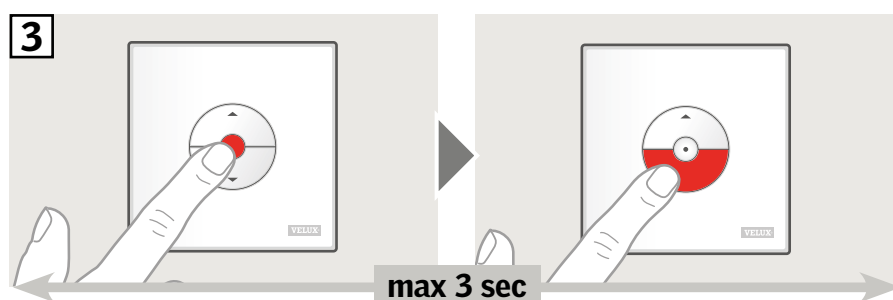
Note: Registration (2 and 3) must now be completed within the next 10 minutes.



- 2 Press PAIR button on the wall switch for 1 second.



- 3 Press the STOP key and then the DOWN key within 3 seconds.



- 4 The blind can now be operated with the wall switch.

NOTE: The motor must be adjusted to the size of the window before full operation of the solar sunscreening product begins. This is done by running the solar suncreening product all the way up and down without interruption using the wall switch.

