

# VELUX electric awning blind MML

**VELUX®**



---

VELUX electric awning blinds can be remote-controlled and reduce overheating to maintain a cool, comfortable temperature in your room. They are transparent, so you can always enjoy your views and natural light during the day. They connect with your VELUX electric roof windows to give you total control over your indoor comfort.

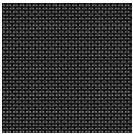
- Heat protection keeps your room cool and increases indoor comfort.
- VELUX electric blinds, awning blinds and shutters give you convenient remote control for extra comfort.
- Preserve your outside view, reduce unwanted glare and incoming sunlight
- Maintenance-free design delivers peace of mind for the lifetime of your product.
- Compatible with VELUX ACTIVE with NETATMO for a better indoor climate with automatic heat protection. Remote controlled via smartphone or voice.
- Stepless positioning allows you to lower the blind to exactly where needed.
- Built to last, the wind-resistant awning blind has been strength-tested in our testing facilities.



## Colours and patterns

---

VELUX awning blind has a transparent mesh fabric. Add this fabric colour code to your awning blind type when you order your products.



5060

## Operation guidance

---

The VELUX electric awning blind can be raised and lowered with the pre-paired wall switch.

## Compatibility

---

Compatibility with VELUX roof windows:

Awning blind MML can be fitted on roof windows GGL, VELUX electric GGL, GGU, VELUX electric GGU, GPL, GPU, VELUX electric GPU1), GLL, GLU and GZL2).

The roof windows must not be combined with fixed additional window element GIL or GIU and the roof pitch must be between 15° and 90°.

MML-SA cannot be installed on any top-hung windows produced before 2000.

- 1) If combining the awning blind with VELUX electric roof window GPU, installation kit ZOZ 229S must be ordered.
- 2) The awning blind can only be fitted on roof windows GZL manufactured before January 2003 or after March 2008.

As to sizes, please refer to the price list as continuous changes of the product programme are made. The awning blind can also be made to measure.

If combining MML-SA with a roof window with copper covers produced after 2000, a separate storm profile and side rails for the awning blind, kit ZOZ -K- 240, must be ordered. Not available for roof windows with copper covers produced before 2000.

If combining it with a roof window GGL or GGU produced between 1992-2000, a separate installation kit ZOZ 238 must be ordered.

The combination of several roof windows side by side requires a frame distance of at least 18 mm. If the windows are combined over/under each other, the frame distance must be at least 250 mm. The electric awning can be fitted in windows with twin flashing EB-.

Compatibility with other VELUX sunscreening products, VELUX electric and VELUX ACTIVE products:

The awning blind can be combined with interior sunscreening products. Please note that if it is combined with an interior solar blind, the ability of the solar cells of the interior blind to recharge the batteries will be reduced or eliminated.

The awning blind can be combined with electric window operators. It cannot be combined with other exterior

sunscreening products.

## Further information

---

We reserve the right to make technical changes.

For more information on our products, please visit <https://www.velux.co.uk> or <https://www.velux.ie>.

## Technical information

---

<b>VELUX electric awning blind MML</b>	<b>Connection</b>	The awning blind is delivered with a short motor cable for direct connection to the connection box in the VELUX electric roof window. Alternatively, the awning blind can be connected to a separate control system. When using a longer cable, please observe the following minimum wiring dimensions: Length up to 20 m: 0.75 mm <sup>2</sup> Length up to 40 m: 1.50 mm <sup>2</sup>
	<b>Installation and use</b>	The awning blind can be installed both from the inside and the outside. MML is to be connected to VELUX electric roof windows. When installing MML in a VELUX manually operated roof window, a VELUX electric control system is required (to be ordered separately).
	<b>Material and colour</b>	Top casing, side profiles and bottom cover: Lacquered aluminium, grey (NCS S 7500-N) Top casing end pieces, side profile bottom pieces and bottom cover end pieces: Tinted plastic, grey (NCS S 7500-N).
	<b>Power consumption</b>	1.6 A, 24 V d.c., from VELUX electric roof windows, or from a VELUX electric control system.
<b>Pre-paired wall switch</b>	<b>Installation and use</b>	A pre-configured one-way radio frequency wall switch (KLI 313) is included. Radio frequency range: 300 m range open field. Depending on the building construction, the indoor range is approximately 30 m.
	<b>Material and colour</b>	ABS plastic, white (NCS S 1000-N)
	<b>Power consumption overview</b>	2 x alkaline AAA (1.5V) batteries Expected battery lifetime: Up to 1 year.
	<b>Size and weight description</b>	8.2 cm x 8.2 cm x 1.7 cm, 0.125 kg.