

VELUX solar awning blind MSL



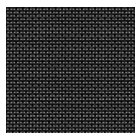
VELUX solar awning blinds can be remote-controlled and reduce overheating to maintain a cool, comfortable temperature in your room. They are transparent, so you can always enjoy your views and natural light during the day, and they are easy to install (no wiring). They connect with your VELUX manual and solar roof window to give you total control over your indoor comfort.

- Heat protection keeps your room cool and increases indoor comfort.
- VELUX solar interior blinds, awning blinds and roller shutters give you convenient remote control without any wiring.
- Preserve your outside view, reduce unwanted glare and incoming sunlight
- Designed to fit for quick and easy installation from the inside
- Maintenance-free design delivers peace of mind for the lifetime of your product.
- Compatible with VELUX ACTIVE with NETATMO for a better indoor climate with automatic heat protection. Remote controlled via smartphone or voice.
- Stepless positioning allows you to lower the blind to exactly where needed.
- Built to last, the wind-resistant awning blind has been strength-tested in our testing facilities.



Colours and patterns

VELUX awning blind has a transparent mesh fabric. Add this fabric colour code to your awning blind type when you order your products.



5060

Operation guidance

The VELUX solar awning blind can be raised and lowered with the pre-paired wall switch.

Compatibility

Awning blind MSL-SA can be installed on roof windows GGL, GPL, GPU, GLL, GLU, GHL and GZL. If roof windows are combined with fixed window element GIL or GIU, the solar awning blind variant MSI should be used and the roof pitch must be between 15° and 85°.

MSL-SA cannot be installed on any top-hung roof window produced before 2000.

MSL-SA can be installed on VELUX solar roof window GGL/GGU produced between 2000 and 2014 (without K in the code) by using the ZOZ 246 dual solar switch.

MSL-SA can be installed on VELUX solar roof window GGL/GGU produced before 04.2019 in widths MK--, PK--, SK-- and UK-- (long VRW solar cell panel).

For sizes CK-- and FK--, dual solar switch ZOZ 246 has to be used.

MSL-SA can be installed on VELUX solar roof window GGL/GGU produced after 04.2019 in widths MK--, PK--, SK-- and UK-- (short VRW solar cell panel).

For sizes CK-- and FK--, dual solar switch ZOZ 246 has to be used.

As to sizes, please refer to the price list as continuous changes of the product programme are made. The awning blind can also be made to measure.

If combining the awning blind MSL-SA with a roof window with copper covers produced after 1992, a separate bottom cover for the awning blind, kit ZOZ -K-- 240, must be ordered.

If combining it with a roof window GGL or GGU produced between 1992-2000, a separate installation kit ZOZ 238 must be ordered.

If combining it with VELUX electric GPU, installation kit ZOZ 229S must be ordered.

The combination of several roof windows side by side requires a frame distance of at least 18 mm. If the windows are combined over/under each other, the frame distance must be at least 250 mm. The solar awning can be fitted in windows with twin flashing EB-.

Compatibility with other VELUX sunscreening products, VELUX solar products and VELUX ACTIVE products:

The awning blind can be combined with interior suncreening products. Please note that if it is combined with an

interior solar blind, the ability of the solar cells of the blind to recharge the batteries will be reduced or eliminated.

The awning blind cannot be combined with other exterior sunscreening products.

Further information

We reserve the right to make technical changes.

For more information on our products, please visit <https://www.velux.co.uk> or <https://www.velux.ie>.

Technical information

VELUX solar awning blind MSL	Battery	High performance battery, NiMH, 9.6 V DC, 2100 mAh. The battery is an energy buffer for operation in periods with inadequate charging. A fully charged battery allows up to 100 operations. The awning blind has a battery which must be switched on before operation.
	Connection	N/A
	Installation and use	The awning blind can be installed both from the inside and the outside. No need to connect mains supply as the awning blind is powered by a pre-installed solar cell.
	Material and colour	Top casing, side profiles and bottom cover: Lacquered aluminium, grey (NCS S 7500-N) Top casing end pieces, side profile bottom pieces and bottom cover end pieces: Tinted plastic, grey (NCS S 7500-N).
	Power consumption	High performance battery, NiMH, 9.6 V d.c., 2100 mAh. The battery is an energy buffer for operation in periods with inadequate charging. A fully charged battery allows up to 100 operations. The awning blind comes with a battery which must be switched on before operation. Expected battery lifetime: 10 years.
Pre-paired wall switch	Solar cell	Photovoltaic solar cell unit integrated in the awning blind top casing.
	Installation and use	A pre-configured one-way radio frequency wall switch (KLI 313) is included. Radio frequency range: 300 m range open field. Depending on the building construction, the indoor range is approximately 30 m.
	Material and colour	ABS plastic, white (NCS S 1000-N)
	Power consumption overview	2 x alkaline AAA (1.5V) batteries Expected battery lifetime: Up to 1 year.
	Size and weight description	8.2 cm x 8.2 cm x 1.7 cm, 0.125 kg.