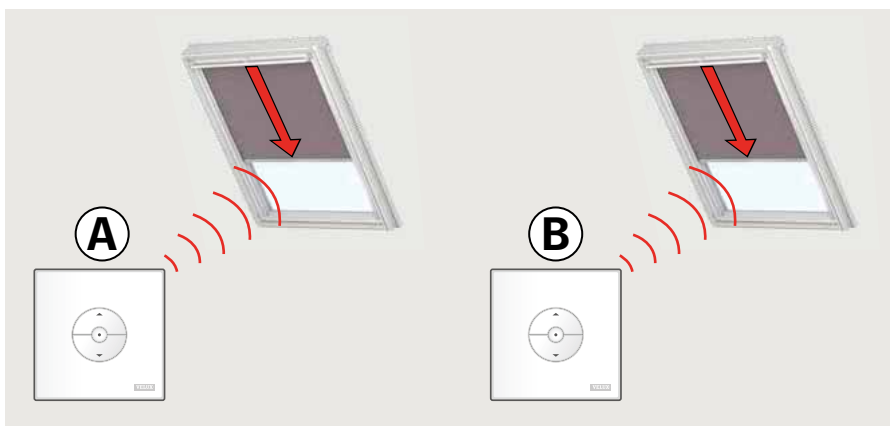


English	Setup of wall switch for group control of products	2
Deutsch	Coming soon	
Français	Coming soon	
Dansk	Coming soon	
Nederlands	Coming soon	
Italiano	Coming soon	
Español	Coming soon	
Bosanski	Coming soon	
Български	Coming soon	
Česky	Coming soon	
Eesti	Coming soon	
Hrvatski	Coming soon	
Latviski	Coming soon	
Lietuvių	Coming soon	
Magyar	Coming soon	
Norsk	Coming soon	
Polski	Coming soon	
Português	Coming soon	
Română	Coming soon	
Русский	Coming soon	
Slovenščina	Coming soon	
Slovensky	Coming soon	
Srpski	Coming soon	
Suomi	Coming soon	
Svenska	Coming soon	
Türkçe	Coming soon	
Українська	Coming soon	

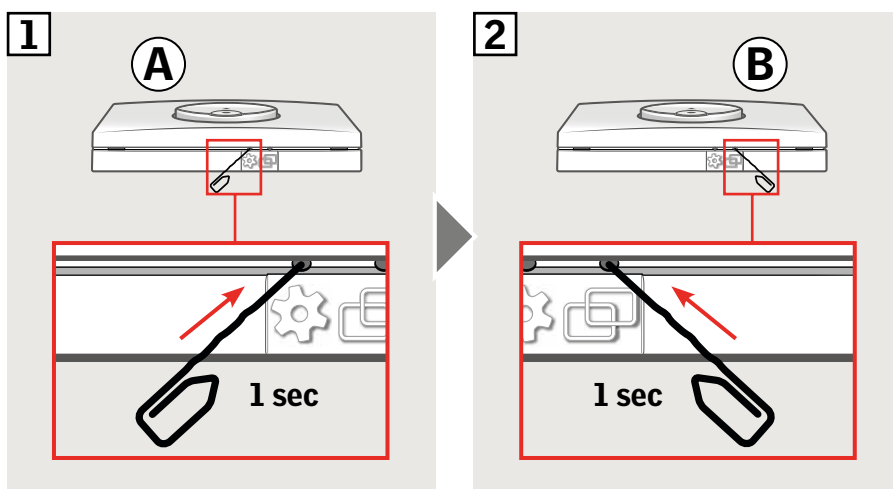
Important: All wall switches must be of the same type.

Wall switches **A** and **B** operate separate products.

The example shows how wall switch **B** is set up to operate both products.



- 1 Press the GEAR button on wall switch **A** for 1 second.
- 2 Press the PAIR button on wall switch **B** for 1 second.



Wall switch **B** can now operate both products.

Wall switch **A** can still operate its own product.

