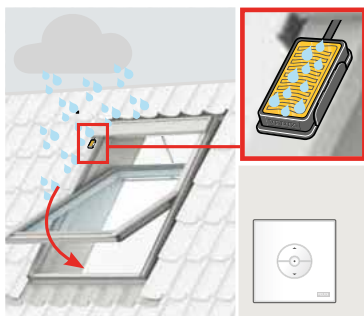
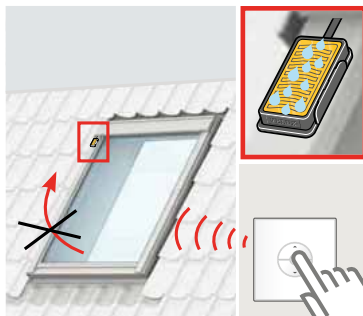


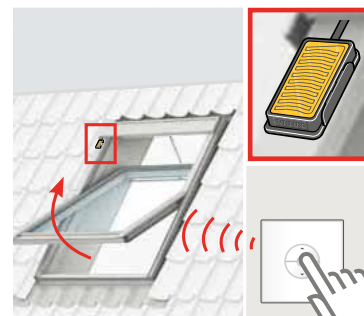
English	Rain sensor	2
Deutsch	Coming soon	
Français	Coming soon	
Dansk	Coming soon	
Nederlands	Coming soon	
Italiano	Coming soon	
Español	Coming soon	
Bosanski	Coming soon	
Български	Coming soon	
Česky	Coming soon	
Eesti	Coming soon	
Hrvatski	Coming soon	
Latviski	Coming soon	
Lietuvių	Coming soon	
Magyar	Coming soon	
Norsk	Coming soon	
Polski	Coming soon	
Português	Coming soon	
Română	Coming soon	
Русский	Coming soon	
Slovenščina	Coming soon	
Slovensky	Coming soon	
Srpski	Coming soon	
Suomi	Coming soon	
Svenska	Coming soon	
Türkçe	Coming soon	
Українська	Coming soon	



When the rain sensor is activated, the roof window will close automatically within approx. 30 seconds.



The rain sensor prevents the roof window from opening as long as it detects rain.



The window can be opened again with the wall switch when the rain sensor is dry.

Overruling rain sensor function

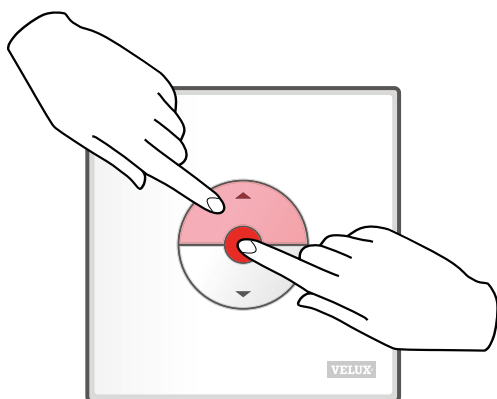
Note: The following steps can only be carried out with wall switch KLI 311.

To prevent water damage inside the building, the window normally cannot be opened until the rain sensor is dry again. However, it may, in some cases, take some time for the rain sensor to dry after the rain has stopped. In these cases, the rain sensor can be overruled at the owner's own risk, see below.

The overruling of the rain sensor will enable the window to open 50% for a period of 15 min.

Warning! As the rain sensor function is suspended for 15 min, there is a risk of water damage to the building. Therefore, we do not recommend overruling the rain sensor if the window is left unattended.

The window can be closed again anytime with a press on the DOWN key.



Press OPEN/UP and STOP key simultaneously for 1 second.