

Flat roof windows

Dimension table

| mm | | height | | | | | | | |
|-------|------|---|---|---|--------------------------|---|--------------------------|---|--|
| | | 600 | 800 | 900 | 1000 | 1200 | 1500 | 2000 | |
| width | 600 | CFU CVU CFP CVP 060060 | | CFU CVU CFJ CVJ 090060 | | | | CFU CVU 200060 NEW size | |
| | 800 | | CFU CVU CFP CVP 080080 | | | CFU CVU 150080 NEW size | | | |
| | 900 | CFP CVP 060090 | | CFU CVU CFP CVP 090090 | | CFU CVU CFJ CVJ 120090 | | | |
| | 1000 | | | CFU CVU CFP CVP | CFJ CVJ CSP CXP | | CFU CVU | CFJ CVJ CFU CVU 200100 | |
| | 1200 | | | CFP CVP CXP | | CFU CVU CFP CVP | CFJ CVJ CSP CXP | CFU CVU 150120 NEW size | |
| | 1500 | | | | CFP CVP | | CFU CVU CFP CVP | CFJ CVJ | |
| | | | | | 100150 | | 150150 | | |

CFP, CVP, CXP-the rectangular format must be installed the shorter side along the slope of the roof. On all vented rectangular sizes the window opens on the short side.

CFU, CVU, CFJ, CVJ -the rectangular format must be installed the longer side along the slope of the roof. On all vented rectangular sizes, the window opens on the long side.



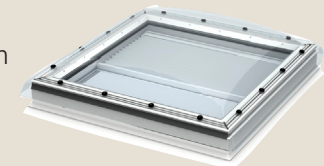
Curved glass rooflight CFU/CVU



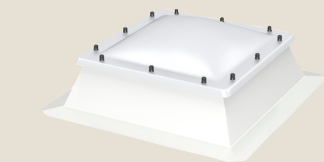
Flat glass rooflight CFU/CVU



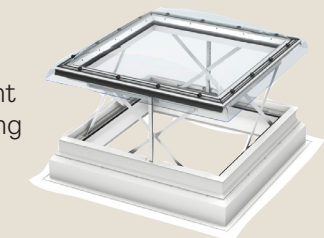
Dome with glazing CFP/CVP



Dome CFJ/CVJ



Smoke vent with glazing CSP



Roof exit with glazing CXP

