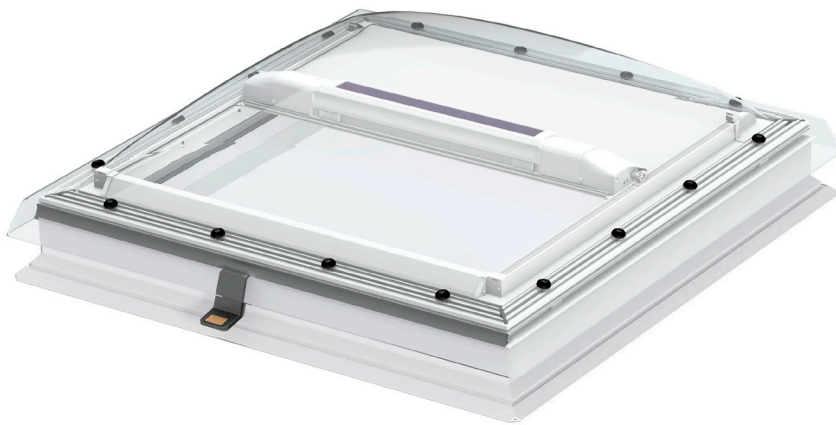


# VELUX solar anti-heat blind MSG

**VELUX®**



The VELUX solar anti-heat blind for flat-roof windows provides light dimming and heat protection. This makes it perfect for bedrooms and living rooms with activity during the day. It is easy to install from the outside.

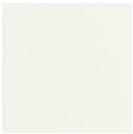
- Heat protection keeps your room cool and increases indoor comfort.
- VELUX solar interior blinds, awning blinds and roller shutters give you convenient remote control without any wiring.
- Maintenance-free design delivers peace of mind for the lifetime of your product.
- Compatible with VELUX ACTIVE with NETATMO for a better indoor climate with automatic heat protection. Remote controlled via smartphone or voice.
- Stepless positioning allows you to lower the blind to exactly where needed.



## Colours and patterns

---

VELUX awning blind has a transparent mesh fabric. Add this fabric colour code to your awning blind type when you order your products.



6090

## Operation guidance

---

The VELUX solar awning blind can be operated with the pre-paired wall switch to any desired position.

## Compatibility

---

Compatibility with VELUX flat roof windows:

MSG can be installed in CFP, VELUX electric CVP and CSP (depending on local regulations). Do not install in VELUX electric CVP with opaque dome or ISD 2093 flat glass. As to sizes, please refer to the price list as continuous changes of the product programme are made.

Compatibility with other VELUX decoration and sunscreening products and VELUX solar products:

MSG is a stand-alone product and can be combined with other io-homecontrol® labelled products. MSG can be combined with VELUX electric translucent pleated blind FMG and blackout energy pleated blind FMK.

## Further information

---

We reserve the right to make technical changes.

For more information on our products, please visit <https://www.velux.co.uk> or <https://www.velux.ie>.

## Technical information

---

<b>VELUX solar anti-heat blind MSG</b>	<b>Battery</b>	High performance battery, NiMH, 4.8 V d.c., 1100 mAh. A fully charged battery allows up to 200 operations. The battery has been inserted at delivery but must be connected before operation.
	<b>Connection</b>	N/A
	<b>Installation and use</b>	MSG is installed from the outside. It is placed between the dome (ISD) and the window (insulating glass unit).
	<b>Material and colour</b>	Top casing with control bar, side profiles and bottom profile: Lacquered aluminium, white Top casing end pieces and side profile bottom pieces: Plastic, white.
	<b>Power consumption</b>	High performance battery, NiMH, 4.8 V d.c., 1100 mAh.  The battery is an energy buffer for operation in periods with inadequate charging. A fully charged battery allows up to 200 operations. The anti-heat blind comes with a battery which must be switched on before operation.  Expected battery lifetime: 10 years.
<b>Pre-paired wall switch</b>	<b>Solar cell</b>	The photovoltaic solar cell unit is integrated into the handle strip.
	<b>Installation and use</b>	A pre-configured one-way radio frequency wall switch (KLI 313) is included. Radio frequency range: 300 m range open field. Depending on the building construction, the indoor range is approximately 30 m.
	<b>Material and colour</b>	ABS plastic, white (NCS S 1000-N)
	<b>Power consumption overview</b>	2 x alkaline AAA (1.5V) batteries Expected battery lifetime: Up to 1 year.
	<b>Size and weight description</b>	8.2 cm x 8.2 cm x 1.7 cm, 0.125 kg.