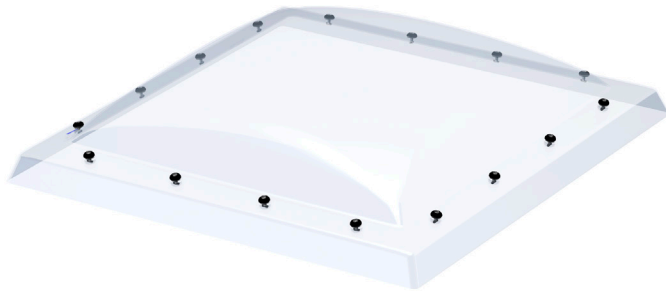


VELUX dome ISD 0000

VELUX®



Available base
units

The ideal choice for schools, hospitals and offices, the VELUX clear acrylic dome gives high light transmittance and is made from a durable scratch-resistant material. The outer surface and natural drainage properties provide clear views to the outside. Compatible with VELUX INTEGRA® accessories for daylight control, light dimming and heat protection.

- Clear dome lets in more natural light for brighter indoor areas and better indoor comfort.
- Enjoy comfortable control of heat and light with our complete selection of blinds for flat-roof windows.
- Enjoy a quieter indoor environment from the efficient sound reduction of outside noises.
- A scratch-resistant outer surface provides a high durability.
- Rain water and leaves are easily drained away, even in roofs with 0° pitch.
- Water and snow drains from the durable plastic dome because of its rounded shape.
- Find the perfect light and shade solution that meets your personal needs.



Application guidance

The dome top unit can be installed with all base units within the roof pitch range of 0° to 15°.



Combine the dome with a base unit that meets your need for daylight and ventilation. Choose the electrically-vented base unit CVP for fresh air at the touch of a button or the fixed base unit CFP if your primary need is to bring daylight into the room.

Available sizes and daylight area

Compatible Base Units

	600	800	900	1000	1200	1500
600	ISD 060060 (0.19)					
800		ISD 080080 (0.40)				
900	ISD 060090 (0.32)		ISD 090090 (0.54)			
1000				ISD 100100 (0.70)		
1200			ISD 090120 (0.76)		ISD 120120 (1.07)	
1500				ISD 100150 (1.11)		ISD 150150 (1.78)

All measurements are in mm. () = Effective daylight area, m²

Technical values

Overview of technical values for the product, covering among other, CE marking in accordance with EN 1873 or EAD 200062-00-0401

Window characteristics	CFP 630K + ISD 0000	CFP 730V + ISD 0000	CFP 73UT + ISD 0000	CSP 730V + ISD 0000	CVP Electric 630K + ISD 0000	CVP Electric 730V + ISD 0000	CVP Electric 73UT + ISD 0000	CVP Manual 73UT + ISD 0000	CXP 730V + ISD 0000
Air permeability	A3	A3	A3	4	4	4	4	4	4
Thermal transmittance $U_{rc,ref300}$ (CE-marked) (U-value) [W/m ² /K]	0.87	0.80	0.87	0.99	0.87	0.80	0.87	0.87	0.86
Arc, ref300 [m ²]	3.4	3.4	3.4	3.4	3.4	3.4	3.4	3.4	3.4
Light transmittance (τ_v) (τ)	0.68	0.72	0.72	0.72	0.68	0.72	0.72	0.72	0.72
Sound insulation $R_{w,dB}$ [dB]	36	36	36	33	36	36	30	30	36
Total solar energy transmittance (g-value) (g)	0.49	0.53	0.54	0.53	0.49	0.53	0.54	0.54	0.53
Ultraviolet transmittance (τ_{uv}) (τ_{uv})	0.05	0.05	0.05	0.05	0.05	0.05	0.05	0.05	0.05
Burglar resistance window	npd	2	npd	npd	npd	2	npd	npd	npd
Frame factor	N/A	N/A	N/A	N/A	N/A	N/A	N/A	N/A	N/A
Air permeability	A3	A3	A3	4	4	4	4	4	4
Reaction to fire	B-s1,d0	B-s1,d0	B-s1,d0	B-s1,d0	B-s1,d0	B-s1,d0	B-s1,d0	B-s1,d0	B-s1,d0
Bonding of cover glass (glass of top unit)	N/A	N/A	N/A	N/A	N/A	N/A	N/A	N/A	N/A
External fire performance - European	npd	npd	npd	npd	npd	npd	npd	npd	npd
External fire performance - British	npd	npd	npd	npd	npd	npd	npd	npd	npd
Impact resistance	N/A	N/A	N/A	N/A	N/A	N/A	N/A	N/A	N/A
Impact resistance large soft body	SB 1200	SB 1200	SB 1200	SB 1200	SB 1200	SB 1200	SB 1200	SB 1200	SB 1200
Impact resistance small hard body	✓	✓	✓	✓	✓	✓	✓	✓	✓
Rain noise (Lia)	48	53	53	47	46	49	50	46	50
Resistance to downward loads	DL 2500	DL 2500	DL 2500	DL 2500	DL 2500	DL 2500	DL 2500	DL 2500	DL 2500
Resistance to fire	npd	npd	npd	npd	npd	npd	npd	npd	npd
Resistance to snow load	N/A	N/A	N/A	N/A	N/A	N/A	N/A	N/A	N/A
Resistance to upward load	UL 1500	UL 1500	UL 1500	UL 1500	UL 1500	UL 1500	UL 1500	UL 1500	UL 1500
Resistance to wind load	N/A	N/A	N/A	N/A	N/A	N/A	N/A	N/A	N/A
Water tightness	✓	✓	✓	✓	✓	✓	✓	✓	✓

NPD: No Performance Determined

Insulating glass unit structure

<STEPTABLE O="Product-24434-0" OT="Product" TT="26335454" VC="Context1" VO="27388281" W="Approved" />

Cleaning and maintenance



Cleaning of the top unit is only possible from the outside. When cleaning the top unit, do not open the window. For electrical windows, switch off the mains supply.

To clean inner surface of top unit and outer glass surface of base unit, remove cover caps and screws to remove the top unit and fasten again after cleaning.

In regions with heavy snowfall, snow masses on the flat-roof window must be removed on a regular basis.

Guarantee period

Blinds and awnings

Complete your VELUX flat roof window with a blind for complete comfort. Choose from a range of blinds, including a translucent pleated blind for softening the light, anti-heat blind for heat protection and blackout energy pleated blind for darkening the room.

Use VELUX App Control or VELUX ACTIVE with NETATMO for smartphone control of your vented flat roof window and blinds.

Further information

We reserve the right to make technical changes.

For more information on our products, please visit <https://velux.com>.