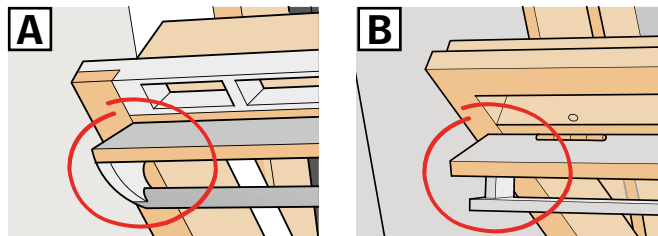


English	Closing of VELUX INTEGRA® roof windows GGL/GGU in the case of power failure or discharged battery	2
Deutsch	Coming soon	
Français	Coming soon	
Dansk	Coming soon	
Nederlands	Coming soon	
Italiano	Coming soon	
Español	Coming soon	
Bosanski	Coming soon	
Български	Coming soon	
Česky	Coming soon	
Eesti	Coming soon	
Hrvatski	Coming soon	
Latviski	Coming soon	
Lietuvių	Coming soon	
Magyar	Coming soon	
Norsk	Coming soon	
Polski	Coming soon	
Português	Coming soon	
Română	Coming soon	
Русский	Coming soon	
Slovenščina	Coming soon	
Slovensky	Coming soon	
Srpski	Coming soon	
Suomi	Coming soon	
Svenska	Coming soon	
Türkçe	Coming soon	
Українська	Coming soon	

Manual closing without using the wall switch

In case of power failure or discharged battery, you can close your centre-pivot window manually by disengaging the chain on the ventilation flap of the window.

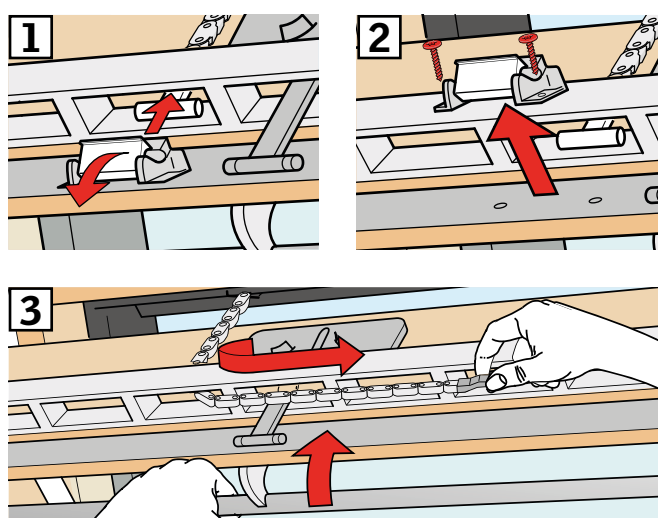
There are two ways of manual closing depending on window type. The ventilation flap can look like **A** or **B**. See how to disengage the chain on the ventilation flap according to your window type below.



A

The ventilation flap of the window looks like **A**:

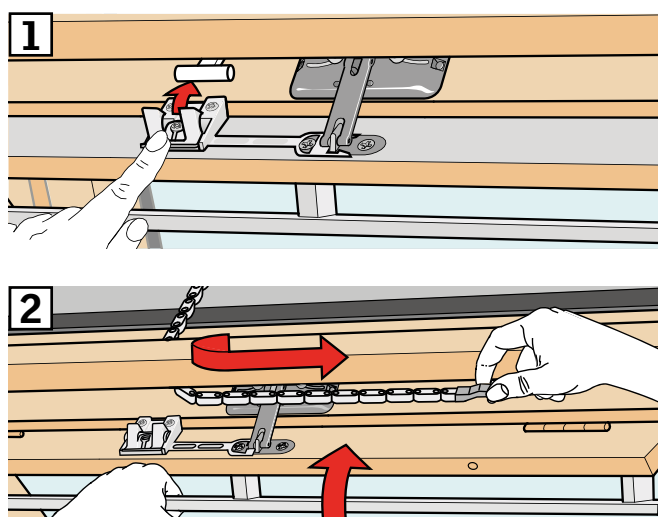
- 1 Disengage the chain by pressing the release clip on the flap bracket.
- 2 Remove the flap bracket.
- 3 Fold the chain as shown, and close the ventilation flap of the window to ventilation position.



B

The ventilation flap of the window looks like **B**:

- 1 Disengage the chain by pressing the release clip on the flap bracket.
- 2 Fold the chain as shown, and close the window manually.



When the power has been reconnected or the battery has been recharged, you must re-engage the chain.

- Open the window manually and unfold the chain.
- Replace the flap bracket if the ventilation flap looks like **A**.
- Run back the chain by pressing the test button on the window operator briefly.
- Close the window manually.

