

# VELUX solar anti heat blind MSU



The VELUX solar anti-heat blind for glass rooflights provides light dimming and heat protection so your room temperature stays cool and comfortable. This blind is discreetly placed inside the rooflight. It is installed from the roof, which can be done easily when installing the window.

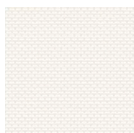
- Heat protection keeps your room cool and increases indoor comfort.
- VELUX solar interior blinds, awning blinds and roller shutters give you convenient remote control without any wiring.
- Made to measure for perfect integration and fast installation.
- Enjoy maximum daylight and an unobstructed view to the sky as the blind is hidden inside the frame of the window when not in use.
- Compatible with VELUX ACTIVE with NETATMO for a better indoor climate with automatic heat protection. Remote controlled via smartphone or voice.
- Maintenance-free design delivers peace of mind for the lifetime of your product.



## Colours and patterns

---

VELUX awning blind has a transparent mesh fabric. Add this fabric colour code to your awning blind type when you order your products.



5070

## Operation guidance

---

The solar awning blind is operated by an individual pre-configured wall switch, included in the packages.

## Compatibility

---

Compatibility with VELUX flat-roof windows: MSU can be installed in glass rooflights CVU and CFU.

Compatibility with other VELUX decoration and sunscreening products and VELUX solar products: MSU is a stand-alone product and can be combined with other io-homecontrol® labelled products. MSU cannot be combined with VELUX solar blackout blind DSU, but can be combined with insect screen ZIU.

As to sizes, please refer to the price list as continuous changes of the product programme are made.

## Further information

---

We reserve the right to make technical changes.

For more information on our products, please visit <https://www.velux.co.uk> or <https://www.velux.ie>.

## Technical information

<b>VELUX solar anti heat blind MSU</b>	<b>Battery</b>	High performance battery, NiMH, 9.6 V DC, 2100 mAh.
	<b>Connection</b>	N/A
	<b>Installation and use</b>	The anti-heat blind is placed inside the rooflight between the glass top unit and the rooflight base unit. Mounting is therefore most convenient during the installation process. The anti-heat blind has a high-quality NiMH battery which is charged by a solar cell in the top casing, and is operated with the pre-paired wall switch.
	<b>Material and colour</b>	Fabric based on vinyl-coated fibreglass with improved heat stabilisation. Colours: See brochure and price list for VELUX decoration and sunscreening products. Control bar, top fascia and side rails: Anodised or white-painted aluminium. Cords: 100 % polyester. Guides and bottom brackets: Plastic.
	<b>Power consumption</b>	High performance battery, NiMH, 9.6 V DC, 2100 mAh.  The battery is an energy buffer for operation in periods with inadequate charging. A fully charged battery allows up to 100 operations. The shutter comes with a battery which must be switched on before operation. Expected battery lifetime: 10 years.
<b>Pre-paired wall switch</b>	<b>Solar cell</b>	Photo-voltaic solar cell unit is integrated in the top casing.
	<b>Installation and use</b>	A pre-configured one-way radio frequency wall switch (KLI 313) is included. Radio frequency range: 300 m range open field. Depending on the building construction, the indoor range is approximately 30 m.
	<b>Material and colour</b>	ABS plastic, white (NCS S 1000-N)
	<b>Power consumption overview</b>	2 x alkaline AAA (1.5V) batteries Expected battery lifetime: Up to 1 year.
	<b>Size and weight description</b>	8.2 cm x 8.2 cm x 1.7 cm, 0.125 kg.