

VELUX awning blind MIE.



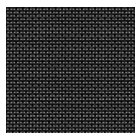
Keep your home cool by reducing solar heating. The VELUX awning blind blocks the sun's rays before they hit the window pane and helps keep your room cool on warm, sunny days. The awning blind is transparent, so you always can enjoy your views and natural light. Fits VFE vertical window element and is easily installed from the inside.

- Heat protection keeps your room cool and increases indoor comfort.
- Preserve your outside view, reduce unwanted glare and incoming sunlight
- Designed to fit for quick and easy installation from the inside
- Maintenance-free design delivers peace of mind for the lifetime of your product.
- Manually operated blinds are a great choice for windows that are within reach.
- Built to last, the wind-resistant awning blind has been strength-tested in our testing facilities.



Colours and patterns

VELUX awning blind has a transparent mesh fabric. Add this fabric colour code to your awning blind type when you order your products.



5060

Operation guidance

To roll down the awning blind, open vertical window element VFE. With the control rod, attach the awning blind to the hooks on the outside of the bottom sash of the vertical window element. To roll up the awning blind, open the vertical window element and detach the awning blind from the hooks with the control rod.

Further information

We reserve the right to make technical changes.

For more information on our products, please visit <https://www.velux.co.uk> or <https://www.velux.ie>.