

<b>English</b>	Closing of VELUX INTEGRA® roof windows GGL/GGU or VELUX INTEGRA® flat roof window CVP without using the wall switch	2
<b>Deutsch</b>	Coming soon	
<b>Français</b>	Coming soon	
<b>Dansk</b>	Coming soon	
<b>Nederlands</b>	Coming soon	
<b>Italiano</b>	Coming soon	
<b>Español</b>	Coming soon	
<b>Bosanski</b>	Coming soon	
<b>Български</b>	Coming soon	
<b>Česky</b>	Coming soon	
<b>Eesti</b>	Coming soon	
<b>Hrvatski</b>	Coming soon	
<b>Latviski</b>	Coming soon	
<b>Lietuvių</b>	Coming soon	
<b>Magyar</b>	Coming soon	
<b>Norsk</b>	Coming soon	
<b>Polski</b>	Coming soon	
<b>Português</b>	Coming soon	
<b>Română</b>	Coming soon	
<b>Русский</b>	Coming soon	
<b>Slovenščina</b>	Coming soon	
<b>Slovensky</b>	Coming soon	
<b>Srpski</b>	Coming soon	
<b>Suomi</b>	Coming soon	
<b>Svenska</b>	Coming soon	
<b>Türkçe</b>	Coming soon	
<b>Українська</b>	Coming soon	

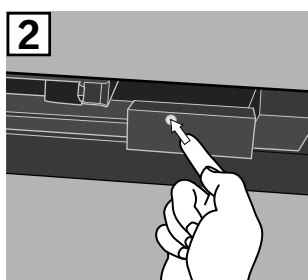
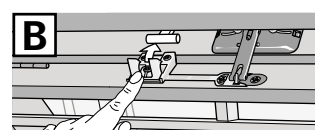
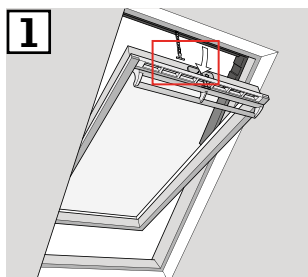
**Manual closing without using the wall switch**

You can close your windows without the wall switch by doing the following.

**Note:** This only applies to the products mentioned below.

**Centre-pivot windows**

- 1 Determine window type **A** or **B** as shown on the previous page. Disengage the chain according to window type.
- 2 Press the test button on the window operator briefly. Wait until the chain stops moving then close the window manually.



**Flat roof windows**

- 1 Carefully remove the cover cap on the kerb.
- 2 Press the test button on the window operator behind the cover cap briefly and refit the cover cap.

