

VELUX solar glass rooflight CVU

Glazing 20, double-glazed



Transform your home by bringing the magic of daylight and fresh air into areas where you never thought possible with the new generation of VELUX glass rooflights. The glass rooflight base unit has a unique design with a slim frame and invisible sash providing maximum daylight and a beautiful design from inside the home. This solar base unit is fully powered by the sun and can be installed in any flat roof home without any need for wiring. The solar base unit comes with 2-layer glazing, but is also available with 3-layer glazing, and has excellent energy performance as well as sound reduction capabilities in case of rain, hail or traffic. It delivers fresh air at the touch of a button and has a pre-installed rain sensor that conveniently closes the window automatically in the event of rain, thus providing full peace of mind. It can even be operated via a smart phone, using the VELUX App Control. A both beautiful and convenient solution for your home.

- Minimal visible rooflight frame contributes to glass-to-edge view to the sky and to letting in maximum daylight.
- Enjoy maximum daylight and a stylish design from inside the home, as blinds or awnings are discretely placed in the rooflight.
- Enjoy a quieter indoor environment and very good thermal insulation from our energy-efficient two-layer insulating glass unit
- Solar-powered for a wire- and hassle-free installation.
- No sun? No problem! The battery will also charge in cloudy weather
- Integrated rain sensor automatically closes the window in the event of rain.
- The motor is hidden from view in the rooflight frame for a sleek appearance and unobstructed view to the sky.



Available sizes and daylight area

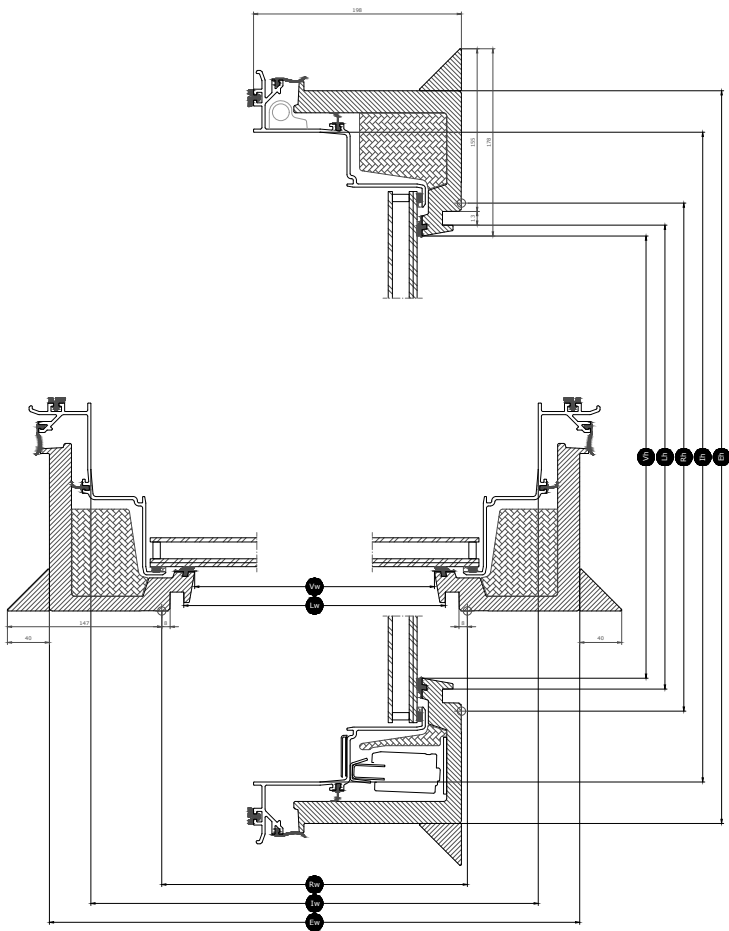
	600	800	900	1000	1200	1500
600	CVU 060060 (0.29)		CVU 090060 (0.45)			
800		CVU 080080 (0.54)				CVU 150080 (1.06)
900			CVU 090090 (0.70)		CVU 120090 (0.95)	
1000				CVU 100100 (0.88)		CVU 150100 (1.35)
1200					CVU 120120 (1.3)	

All measurements are in mm. () = Effective daylight area, m² [] = Geometric free area, m²

*A=large sizes with glazing variant -A

Cross section dimensions

Please note that the view of the cross section is from bottom to top.



Width		060	080	090	100	120	150
Vw	Visible pane width	538.2	738.2	838.2	938.4	1138.2	1438.2
Lw	Inside groove measure width	559	759	859	959	1159	1459
Rw	Roof opening width	600	800	900	1000	1200	1500
Iw	Inside sash measure width	736	936	1036	1136	1228	1636
Ew	External frame width	815	1015	1115	1215	1415	1715

Height		060	080	090	100	120
Vh	Visible pane height	538.2	738.2	838.2	938.2	1138.2
Lh	Inside groove measure height	559	759	859	959	1159
Rh	Roof opening height	600	800	900	1000	1200
Ih	Inside sash measure height	736	936	1036	1136	1228
Eh	External frame height	815	1015	1115	1215	1415

Technical values

Overview of technical values for the product, covering among other, CE marking in accordance with EN 1873 or EAD 200062-00-0401.

Window characteristics	CVU 20Q + ISU 1093	CVU 20Q + ISU 2093
Air permeability	4	4
Thermal transmittance $U_{rc,ref300}$ (CE-marked) (U-value)	0.65	0.75
Arc, ref300 (U-value transmission area)	4.4	4.1
Light transmittance (τ)	0.69	0.68
Sound insulation R_w dB [dB]	39	39
Total solar energy transmittance (g)	0.52	0.52
Ultraviolet transmittance (τ_{uv})	0.05	0.05
Burglar resistance window	RC2	RC2
Frame factor	0.1	0.1
Air permeability	4	4
Reaction to fire	C-s2, d2	C-s2, d2
Bonding of cover glass (glass of top unit) [class]	$\Delta X \geq 0.75$	$\Delta X \geq 0.75$
External fire performance - European		
External fire performance - British	NPD	NPD
Impact resistance	3	3
Impact resistance large soft body	N/A	N/A
Impact resistance small hard body	N/A	N/A
Rain noise	44 dB	44 dB
Resistance to downward loads	N/A	N/A
Resistance to fire	NPD	NPD
Resistance to snow load	*	*
Resistance to upward load	N/A	N/A
Resistance to wind load	C3	C3
Water tightness	9A	9A

NPD: No performance determined

Glazing structure

Glazing unit	Variant composition
Double-glazed	7.5mm laminated float glass - 16mm Argon - 4mm toughened glass with enamel

Blinds and awnings

Complete your VELUX glass rooflight with a blind for absolute comfort. Choose between an anti-heat blind to maintain a cool room on hot days or a blackout blind to block outside light for total darkness. The blinds are discreetly placed and do not compromise daylight and design when not in use. You also have the option of adding an insect screen that lets you enjoy fresh air without any insects.

Use VELUX App Control or VELUX ACTIVE with NETATMO for smartphone control of your vented glass rooflight and blinds.

Compatibility

The solar-powered vented base unit CVU is compatible with the flat glass top unit ISU 2093 and curved glass top-unit ISU 1093.

Installation accessories: Extension kerb ZCU 0015/1015, securing kit for roofing felt ZZZ 210U and lining LSF 2000.

Compatible with blinds: The solar-powered anti-heat blind MSU, the solar-powered blackout blind DSU and the manual insect screen ZIU.

Further information

We reserve the right to make technical changes.

For more information on our products, please visit <https://www.velux.co.uk> or <https://www.velux.ie>.