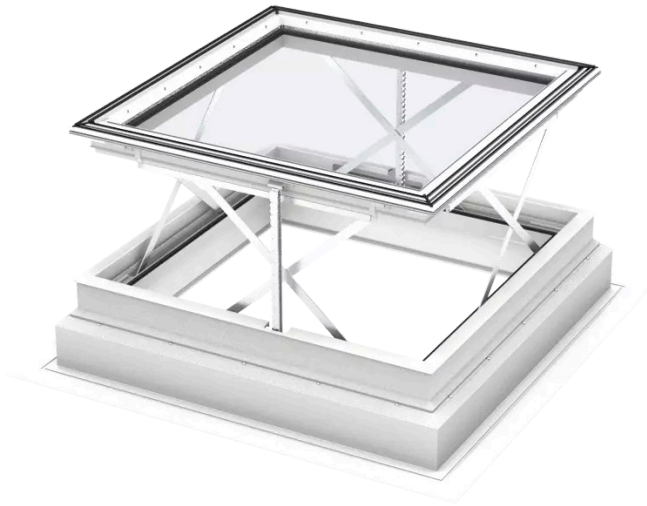


# VELUX flat-roof smoke ventilation window CSP

Glazing 73FQV



The flat-roof smoke ventilation window CSP will automatically open in case of fire and meets all relevant EU legislative requirements. The window can be opened for fresh air when ventilation is needed. A burglar-proof construction provides additional security and a laminated inner pane prevents glass from splintering in the event of breakage.

- Automatically opens in case of fire in accordance with EU legislative requirements.
- Easily open your VELUX electric flat-roof window for fast access to fresh, outside air.
- Heavy-duty scissor opening mechanism is designed for many years of reliable operation.
- Improve your overall comfort with the low-energy double-glazed glazing with two energy coatings.
- Enjoy the security of our top-rated security glazing, which provides class 2 burglary resistance.
- Tilted interior frame design increases the amount of daylight that enters your room.
- Automatically opens in case of fire, in accordance with EU legislation, and can also be opened via a ventilation switch to let in fresh air.



## Available sizes and daylight area

---

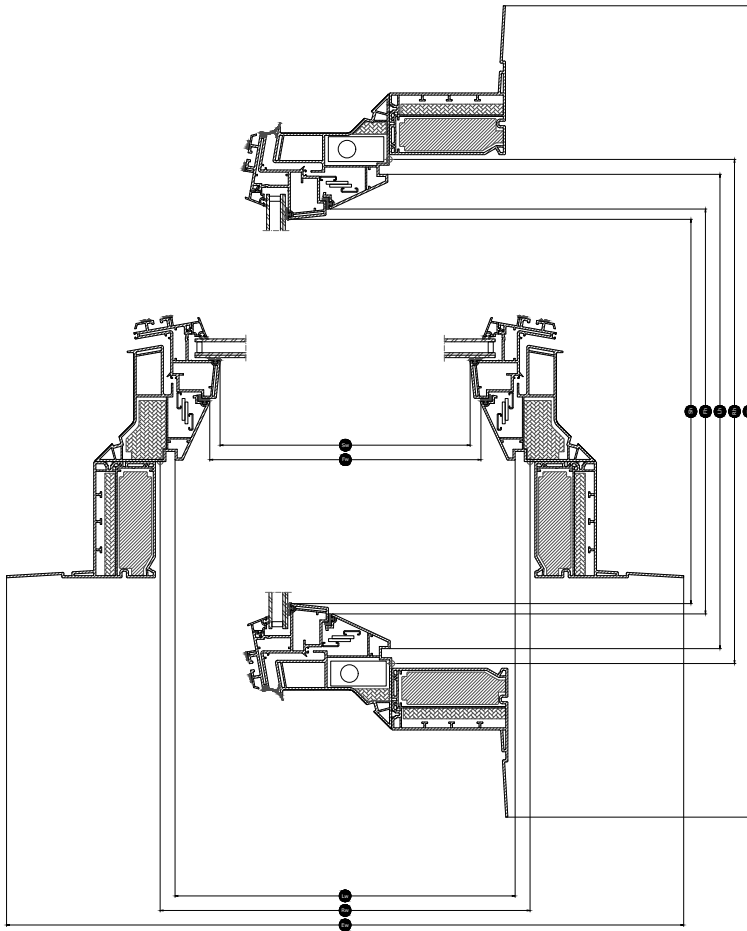
	1000 mm	1200 mm
1000	CSP 100100 (0.70)	
1200		CSP 120120 (1.07)

All measurements are in mm. ( ) = Effective daylight area, m<sup>2</sup> [ ] = Geometric free area, m<sup>2</sup>

\*A=large sizes with glazing variant -A

## Cross section dimensions

Please note that the view of the cross section is from bottom to top.



Width		100	120
Vw	Visible pane width		
Lw	Inside groove measure width	959	1159
Rw	Roof opening width	1000	1200
Iw	Inside sash measure width		
Ew	External frame width	1423	1623

Height		100	120
Vh	Visible pane height		
Lh	Inside groove measure height	959	1159
Rh	Roof opening height	1000	1200
Ih	Inside sash measure height		
Eh	External frame height	1423	1623

## Technical values

Overview of technical values for the product, covering among other, CE marking in accordance with EN 1873 and EN 12101-2.

Window characteristics	CSP 73QV + ISD 0000	CSP 73QV + ISD 0010	CSP 73QV + ISD 0100	CSP 73QV + ISD 0110
Air permeability	4	4	4	4
Thermal transmittance $U_{rc,ref300}$ (CE-marked) (U-value)	0.99	0.99	0.99	0.99
Arc, ref300 (U-value transmission area)	3.4	3.4	3.4	3.4
Light transmittance ( $\tau$ )	0.72	0.70	0.25	0.26
Sound insulation $R_w$ dB [dB]	33	33	33	33
Total solar energy transmittance (g)	0.53	0.50	0.20	0.23
Ultraviolet transmittance ( $\tau_{uv}$ )	0.05	0.05	0.05	0.05
Burglar resistance window	RC2	RC2	RC2	RC2
Frame factor	N/A	N/A	N/A	N/A
Air permeability	4	4	4	4
Reaction to fire	B-s1,d0	B-s1,d0	B-s1,d0	B-s1,d0
Bonding of cover glass (glass of top unit) [class]	N/A	N/A	N/A	N/A
External fire performance - European	npd	npd	npd	npd
External fire performance - British	npd	AA	npd	AA
Impact resistance	N/A	N/A	N/A	N/A
Impact resistance large soft body	SB 1200	SB 1200	SB 1200	SB 1200
Impact resistance small hard body	✓	✓	✓	✓
Rain noise	47	51	47	51
Resistance to downward loads	DL 2500	DL 2500	DL 2500	DL 2500
Resistance to fire	npd	npd	npd	npd
Resistance to snow load	N/A	N/A	N/A	N/A
Resistance to upward load	UL 1500	UL 1500	UL 1500	UL 1500
Resistance to wind load	N/A	N/A	N/A	N/A
Water tightness	✓	✓	✓	✓

NPD: No performance determined

## Glazing structure

Glazing unit	Variant composition
Double-glazed	7.5mm laminated float glass - 14.5mm Argon - 4mm float glass

## Blinds and awnings

---

## Compatibility

---

The electrically vented base unit for smoke ventilation CSP is compatible with an acrylic or polycarbonate dome top unit ISD in either clear or opaque finish.

Installation accessories: Extension kerb ZCE 0015/1015, securing kit for roofing felt ZZZ 210 and lining LSF 2000.

Compatibility with blinds: Solar-powered anti-heat blind MSG (depends on regulation).

## Further information

---

We reserve the right to make technical changes.

For more information on our products, please visit <https://www.velux.co.uk> or <https://www.velux.ie>.