

English	Setup of a new wall switch 311/312/313 in addition to an existing wall switch 311/312/313	2
Deutsch	Coming soon	
Français	Coming soon	
Dansk	Coming soon	
Nederlands	Coming soon	
Italiano	Coming soon	
Español	Coming soon	
Bosanski	Coming soon	
Български	Coming soon	
Česky	Coming soon	
Eesti	Coming soon	
Hrvatski	Coming soon	
Latviski	Coming soon	
Lietuvių	Coming soon	
Magyar	Coming soon	
Norsk	Coming soon	
Polski	Coming soon	
Português	Coming soon	
Română	Coming soon	
Русский	Coming soon	
Slovenščina	Coming soon	
Slovensky	Coming soon	
Srpski	Coming soon	
Suomi	Coming soon	
Svenska	Coming soon	
Türkçe	Coming soon	
Українська	Coming soon	

Setup of a new wall switch 311/312/313 in addition to an existing wall switch 311/312/313

VELUX®

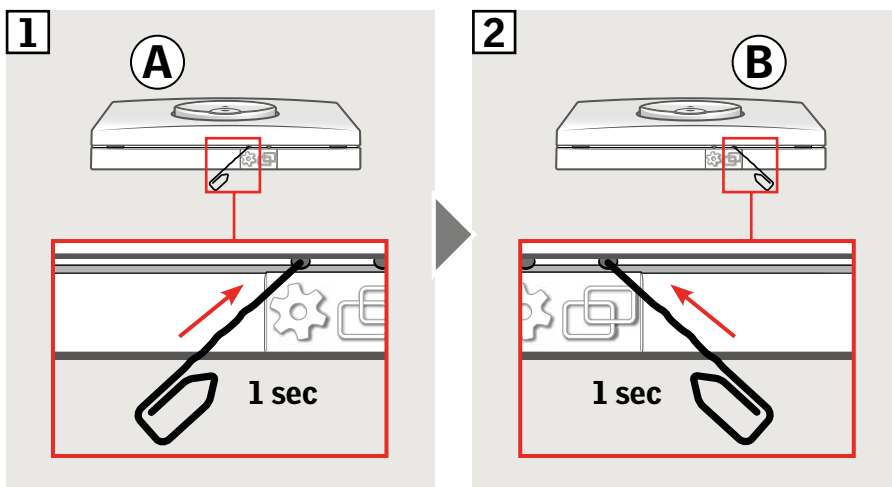
Important: The new wall switch must be of the same type as the existing wall switch.

- Ⓐ Existing wall switch
- Ⓑ New wall switch



- 1 Prepare the product for registration by pressing the GEAR button on the existing wall switch Ⓐ for 1 second.
The product will start running briefly back and forth.

- 2 Press PAIR button on the new wall switch Ⓑ for 1 second.



The product can now be operated with both wall switches.

