

# VELUX solar translucent roller blind RSL



VELUX solar translucent roller blind can be remote-controlled and delivers stepless light adjustment and privacy in rooms where blackout is not needed. They install in minutes with no wiring and can be used with manually operated and VELUX solar roof windows to give you flexible control over the natural light in your room. Comes in a lot of different and decorative colours and patterns. VELUX blinds with white side rails fit perfectly with your white VELUX roof windows.

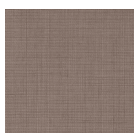
- Increase your privacy, reduce unwanted glare and control incoming sunlight exactly as you like.
- VELUX solar interior blinds, awning blinds and roller shutters give you convenient remote control without any wiring.
- Slimmest profile design on the market lets more natural light in.
- Compatible with VELUX ACTIVE with NETATMO - control your products from anywhere you want via smartphone or voice control.
- Install in minutes - simply click on the blind in the pre-fitted brackets.
- Standard 100 by OEKO-TEX® certification guarantees the product is made without harmful substances.
- Stepless positioning allows you to lower the blind to exactly where needed.
- Elegant blind design with white side rails, which fit perfectly with white VELUX roof windows.



## Colours and patterns

---

VELUX interior blinds are available in a wide range of colours and designs. However, a few blind variants are only available in a limited range of colours. Each colour and design option has a unique code. Add the code of your choice to the relevant blind type when ordering your products.



4163

## Operation guidance

---

The VELUX solar-powered roller blind comes with a pre-paired wall switch for remote-control and can be raised and lowered to any desired position.

## Compatibility

---

Compatibility with VELUX electric roof windows:

Roller blind RSL can be installed in GGL, VELUX electric GGL, VELUX solar-powered GGL, GGU, VELUX electric GGU, VELUX solar-powered GGU, GPL, GPU, VELUX electric GPU, GTL, GTU (except SK10), GXL, GXU, GZL, GIL, GIU, GLL, GLU, GGLS and GPLS.

As to sizes, please refer to the price list as continuous changes of the product programme are made. The roller blind can also be made to measure.

Compatibility with other VELUX sunscreening products, VELUX electric and solar-powered products and VELUX ACTIVE products:

The blind cannot be combined with other interior suncreening products. It is not recommended that it is combined with exterior sunscreening products. VELUX ACTIVE products are compatible with RSL. However, please note that in winter the blind may not be able to be operated as frequently as in summer. The blind can also be fitted with insect roller screen ZIL.

## Further information

---

We reserve the right to make technical changes.

For more information on our products, please visit <https://www.velux.co.uk> or <https://www.velux.ie>.

## Technical information

VELUX solar translucent roller blind RSL	<b>Battery</b>	High performance battery, NiMH. 2 A, 9.6 V d.c. The battery is an energy buffer for operation in periods with inadequate charging. A fully charged battery allows up to 600 operations. The blind comes with a battery which must be switched on before operation. Expected battery lifetime: 10 years.
	<b>Connection</b>	N/A
	<b>Installation and use</b>	The roller blind is easily clicked on to the top brackets pre-fitted on the window, leaving both hands free during the remaining part of the installation. RSL does not require any wiring or connection to mains supply when installed on VELUX electric roof windows.  The roller blind can be raised and lowered in any position using the remote control. The operation is based on radio transmission. An automatic function stops the motor when the blind has reached the top/bottom. Manual operation is possible, but should mainly be used for horizontal alignment of the blinds or in extraordinary cases.  The blind supports silent mode when controlled by VELUX ACTIVE with NETATMO or VELUX App control.
	<b>Material and colour</b>	Control bar with motor unit, top fascia and side rails: White lacquered aluminium. Bottom brackets: Plastic, grey.
	<b>Power consumption</b>	High performance battery, NiMH, 9.6 V DC, 2100 mAh. The battery is an energy buffer for operation in periods with inadequate charging. A fully charged battery allows up to 600 operations. The blind comes with a battery which must be switched on before operation. Expected battery lifetime: 10 years.
	<b>Solar cell</b>	Photovoltaic solar cell unit integrated in the control bar on the side facing the glass.
Pre-paired wall switch	<b>Installation and use</b>	A pre-configured one-way radio frequency wall switch (KLI 312) is included. Radio frequency range: 300 m range open field. Depending on the building construction, the indoor range is approximately 30 m.
	<b>Material and colour</b>	ABS plastic, white (NCS S 1000-N)
	<b>Power consumption overview</b>	2 x alkaline AAA (1.5V) batteries Expected battery lifetime: Up to 1 year.
	<b>Size and weight description</b>	8.2 cm x 8.2 cm x 1.7 cm, 0.125 kg.
Translucent roller blind cloth	<b>Material and colour</b>	Cloth: 100 % polyester. Colours: See brochure and price list for VELUX decoration and sunscreening products. Cords: 100 % polyester